

Optimag P

Pneumatically switched permanent magnetic lifter



Rectangular Optimag P

Pneumatically switched permanent magnet supplied as a modular system in 5 standard sizes, with either fine or coarse pole magnetic configuration. Choice of pole configuration depends on the material to be held.

Fine Pole

Used for clamping or lifting thin or perforated ferrous pressings and sheet material. Double the number of magnetic poles of the coarse pole unit; the magnetic circuit is completed by far thinner material. This is why the fine pole Optimag P can pick up single sheets from the top of a stack without attracting the sheet below.

Coarse Pole

Used for clamping or lifting of materials with rough, uneven surfaces. The coarse pole Optimag P also provides greater clamping forces on thicker materials than the fine pole unit.

Fail Safe

The cylinder houses a high performance neodymium magnet pack. This is moved to contact the work piece when the magnet is switched on. If the air fails, the magnet pack stays in position, the Optimag P stays energised and the load stays held. The Optimag P does not become de-energised until an air supply is used to switch it off.

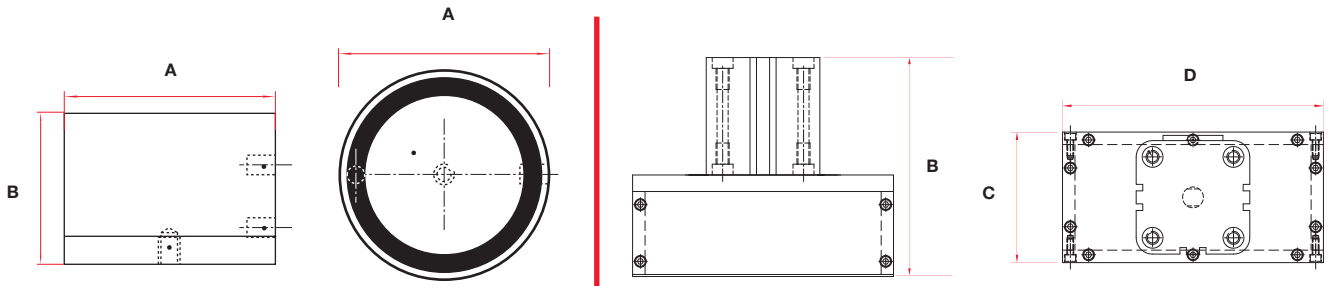
Typical Uses

- Robotics
- Pick and place
- Transfer machinery
- End of arm grippers for manipulators
- Jigs and fixtures
- General lifting
- Turnover applications

Benefits

- Fail-safe operation
- Ideal for thin or uneven surfaces
- Can hold through large air gaps such as packaging
- No damage to parts being handled
- One module suits many applications
- Simple to extend existing systems
- Multiple parts can be picked in a single operation
- Initial part positioning not critical
- Excellent weight to performance ratio
- Low maintenance
- Single point fixing

Technical Data



Circular

Rectangular

Central mounting hole: M10 x 20
Anti-rotation hole - 6mm diameter

Product Information

Product	Load Profile	SWL*	Dimensions mm				Unit Weight
			Diameter A	Height B	Width C	Length D	
Circular							
PSPM80C	Flat	8.5	80	80	N/A	N/A	1.00
PSPM100C	Flat	18.5	100	84	N/A	N/A	1.50
PSPM125C	Flat	29	125	93	N/A	N/A	3.00
PSPM150C	Flat	59	150	109	N/A	N/A	4.80
Rectangular							
PSPM1520	Flat	35	N/A	165	200	150	6.00
PSPM2030	Flat	100	N/A	201	300	200	14.70

*Safe working load

For lifting applications a SWL of 3:1 is recommended

Specification

Air requirements	Only required during switching
Air pressure	1.5 Bar minimum – 2 Bar maximum
Air connection	1/8" BSP
Temperature	Maximum + 50°C (122°F)

Materials

Outer shell material	Aluminium blue anodised finish
Front working face	Stainless steel with rubber protection ring
Magnet material	Rare earth neodymium iron boron