

# Concrete Production

## MATRSHOCK Pneumatic Hammers PS

27



### Description ▼

MARTSHOCK Intermittent Electropneumatic Hammers belong to those flow aids that act destructively as bridge breakers. The mechanical energy released at regular intervals, at the moment of collision, is transmitted through the container wall to the stored material.

MARTSHOCK Hammers are suitable for loosening of adhesive material crusts on walls, pipes and bins, and as bridge breakers in silos. The blow impulse leads to the complete detachment of the crusts or the collapse of a material bridge.

MARTSHOCK Hammers are particularly suitable for retrofitting to existing silo cones or hoppers as no emptying of the bin or drilling of the wall is required.

### Function ▼

The MARTSHOCK Pneumatic Hammer blows produce a violent impact on the wall on which the unit is fitted. MARTSHOCK is suitable for all bin or hopper shapes and sizes.



### Application ▼

In concrete batching plants PS-type MARTSHOCK is mainly used for cleaning the weigh hoppers while emptying into the mixer.

### Benefits ▼

- ✓ **No damage to the hopper structure;**
- ✓ **Low noise impact (with noise-abating accessories);**
- ✓ **Durable;**
- ✓ **Maintenance-friendly;**
- ✓ **Lubrication-free.**

# Concrete Production

## MATRSHOCK Pneumatic Hammers PS

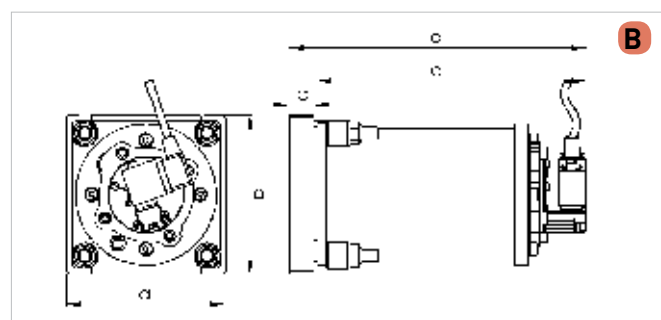
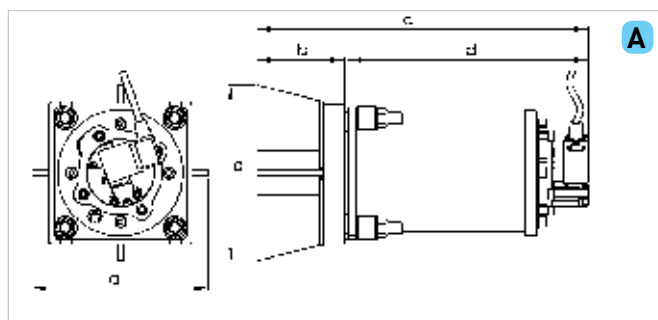
AVS

### Technical Features / Performance

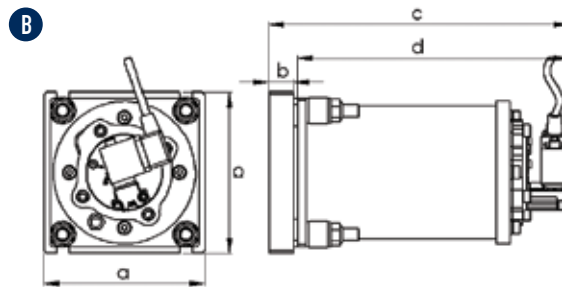
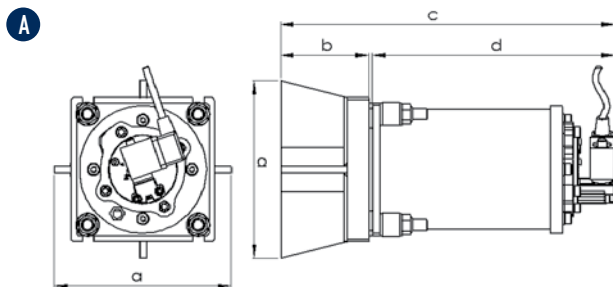
- ▶ Galvanised steel body
- ▶ Weld-on steel plate included (2 types with different thickness)
- ▶ 4 vibration dampers
- ▶ PVC gasket between weld-on plate and body
- ▶ Safety chain fixed on hopper (for assembly and dismantling)
- ▶ Air inlet (PS40: 1/8"; PS63: 1/4")
- ▶ Electro-pneumatic kit
- ▶ Operating temperature: -20°C to 80°C (-4°F to 180°F)
- ▶ Operating pressure: 3 to 6 bar (44 to 88 PSI)
- ▶ Accessories:
  - IP 65 coils
  - Noise abating components
  - Control panel for adjustment of operation/pause intervals
- ▶ Extension with 2 or 4 outputs

### Overall Dimensions

Overall dimension					
Type	PS TYPE "A" [≤ 3mm hopper thickness]				
	a	b	c	d	M
	mm	mm	mm	mm	mm
PS 40	160	80	302	219	16
PS 63	200	95	357	259	25
PS 80	250	119	430	308	
Overall dimension					
Type	PS TYPE "B" [> 3mm hopper thickness]				
	a	b	c	d	M
	mm	mm	mm	mm	mm
PS 40	130	20	242	219	16
PS 63	163	20	282	259	25
PS 80	200	25	336	308	



Features								
Type	Energy	Force	Energy	Force	Air Consumption		i Ø Pipe	Air Nipple
	J	N	J	N	NL		mm	Inch GAS
	3 bar		6 bar		3 bar	6 bar		
PS 40	8.4	199	18.1	429	3.6	5.3	6	1/8" GAS
PS 63	28.8	589	62	1268	6.4	11.6	8	1/4" GAS
PS 80	59.2	846	153	2186	12.5	21	8	1/4" GAS



DIMENSIONAL SPECIFICATIONS - PS TYPE "A" [≤ 3mm HOPPER THICKNESS]

MODEL	A	B	C	D
	mm	mm	mm	mm
PS 40	160	80	302	219
PS 63	200	95	357	259
PS 80	250	119	430	308

DIMENSIONAL SPECIFICATIONS - PS TYPE "B" [> 3mm HOPPER THICKNESS]

MODEL	A	B	C	D
	mm	mm	mm	mm
PS 40	130	20	242	219
PS 63	163	20	282	259
PS 80	200	25	336	308



MODEL	ENERGY (J)	FORCE (N)	ENERGY (J)	FORCE (N)	AIR CONSUMPTION (NL)		I Ø PIPE	AIR INLET
	3 bar		6 bar		3 bar	6 bar	mm	BSPP
PS 40	8.4	199	18.1	429	3.6	5.3	6	1/8" BSPP
PS 63	28.8	589	62	1268	6.4	11.6	8	1/4" BSPP
PS 80	59.2	846	153	2186	12.5	21.0	8	1/4" BSPP

## PS - LINEAR PNEUMATIC VIBRATORS - SINGLE IMPACT

APPLICATION	Hopper and silo
POWDER	Hygroscopic
PROBLEM SOLVING	Bridge and rat-holing

## FEATURES

DUTY CYCLE	Discontinuous
WORKING PRESSURE	From 3 bar to 6 bar (from 43 psi to 87 psi)
PNEUMATIC CIRCUIT	Filter + flow control valve
AIR SUPPLY QUALITY	Class 5.4.1.
WORKING TEMPERATURE	From -20 °C to 80 °C (from -4 °F to 176 °F)
MAX NOISE LEVEL	125 dB(a)
TECHNOLOGY	Single impact
MATERIAL	Steel body, steel attachment plate, PS040-063 nylon (PS080 aluminium) head

## OPTIONS

KIT ATEX	II 3D c T85 °C - PP plate, technothane tablet
TIMER	Adjustable from 30sec to 45min
MULTI-TENSION COILS	From 24V (ac/dc) to 230V
FULLY PNEUMATIC KIT	Available