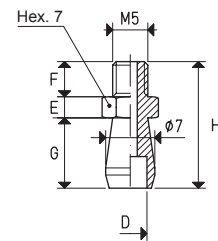


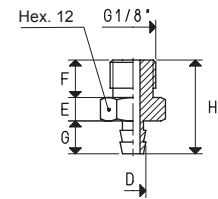


In the following pages are listed the cups for which each support is suited. They are specially shaped to perfectly adhere to the internal profile of the cups and they are provided with a male or female axial pin in order to allow suction, as well as to fasten them to the machine. These cups can be manually assembled onto them with a simple pressure, with no adhesives. They are made with nickel-plated brass or anodised aluminium or with special materials upon request.

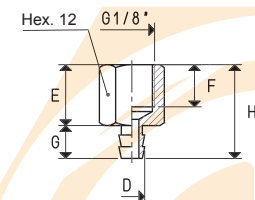
Art.	D	E	F	G	H	Support material	Cup art.	Weight g
	∅							
00 08 01	2.90	3	5	10	18	brass	01 04 10	4.0
							01 05 10	
							01 06 10	
00 08 02	4.75	3	5	10	18	brass	01 08 10	4.0
							01 09 07	



Art.	D	E	F	G	H	Support material	Cup art.	Weight g
	∅							
00 08 03	5.5	5	8	7	20	brass	01 10 10	9.0
							01 11 16	
							01 12 10	
							01 14 10	
							01 14 32	
							01 15 10	
							01 16 20	
							01 17 12	
							01 18 10	
							01 20 10	
							01 20 24	
							01 22 10	
							01 25 28	

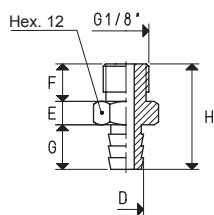


Art.	D	E	F	G	H	Support material	Cup art.	Weight g
	∅							
00 08 04	5.5	13	9	7	20	brass	01 10 10	8.1
							01 11 16	
							01 12 10	
							01 14 10	
							01 14 32	
							01 15 10	
							01 16 20	
							01 17 12	
							01 18 10	
							01 20 10	
							01 20 24	
							01 22 10	
							01 25 28	

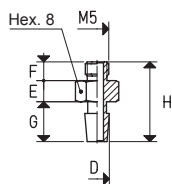


Conversion ratio: inch = $\frac{\text{mm}}{25.4}$; pounds = $\frac{\text{g}}{453.6}$ = $\frac{\text{Kg}}{0.4536}$

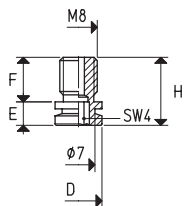
GAS-NPT thread adapters available at page 1.117



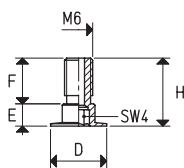
Art.	D ∅	E	F	G	H	Support material	Cup art.	Weight g
00 08 05	7.5	5	8	9.5	22.5	brass	01 15 15	10.0
							01 25 15	
							01 30 15	
							01 40 80	
							01 42 90	



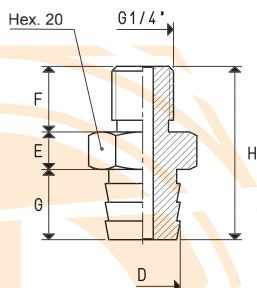
Art.	D ∅	E	F	G	H	Support material	Cup art.	Weight g
00 08 06	5.25	4.5	4	8.5	17	AVP	01 06 50	2.6
							01 08 50	
							01 11 50	
							01 11 16	
							01 16 20	
							01 17 12	



Art.	D ∅	E	F	H	Support material	Cup art.	Weight g
00 08 07	10	5	9.5	14.5	brass	01 18 50	4.8
						01 20 60	



Art.	D ∅	E	F	H	Support material	Cup art.	Weight g
00 08 08	12	4.5	10	14.5	brass	01 19 17	2.7
						01 25 10	
						01 30 10	
						01 35 10	

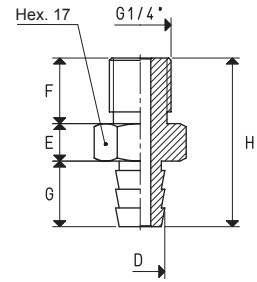


Art.	D ∅	E	F	G	H	Support material	Cup art.	Weight g
00 08 09	16	8	14	15	37	aluminium	01 19 31	18.1
							01 40 70	
							01 75 31	

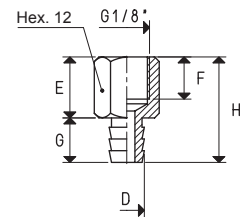
Conversion ratio: inch = $\frac{\text{mm}}{25.4}$; pounds = $\frac{\text{g}}{453.6} = \frac{\text{Kg}}{0.4536}$

GAS - NPT thread adapters available at page 1.117

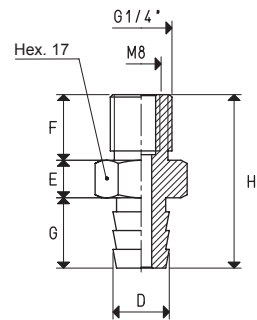
Art.	D ∅	E	F	G	H	Support material	Cup art.	Weight g
00 08 10	10.5	8	14	14	36	brass	01 22 24	30.3
							01 22 45	
							01 22 99	



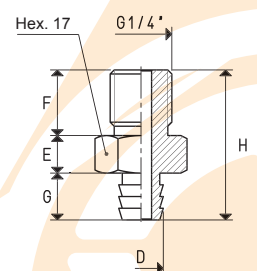
Art.	D ∅	E	F	G	H	Support material	Cup art.	Weight g
00 08 14	7.5	13	9	9.5	22.5	brass	01 25 15	9.8
							01 30 15	
							01 40 80	
							01 42 90	



Art.	D ∅	E	F	G	H	Support material	Cup art.	Weight g
00 08 15	12	8	14	15	37	aluminium	01 25 35	12.3
							01 27 24	
							01 30 24	

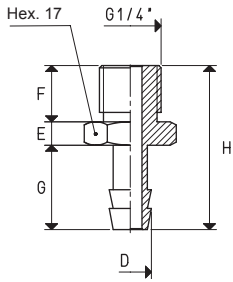


Art.	D ∅	E	F	G	H	Support material	Cup art.	Weight g
00 08 18	9.5	8	14	10	32	aluminium	01 16 26	10.3
							01 30 50	
							01 30 55	
							01 30 99	
							01 40 50	

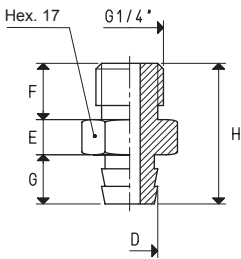


Conversion ratio: inch = $\frac{\text{mm}}{25.4}$; pounds = $\frac{\text{g}}{453.6}$ = $\frac{\text{Kg}}{0.4536}$

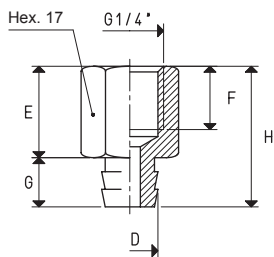
GAS - NPT thread adapters available at page 1.117



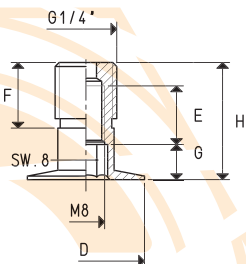
Art.	D ∅	E	F	G	H	Support material	Cup art.	Weight g
00 08 19	9	5	12	18	35	brass	01 32 36	22.7



Art.	D ∅	E	F	G	H	Support material	Cup art.	Weight g
00 08 20	12	8	14	10	32	aluminium	01 35 15	11.0
							01 40 15	
							01 45 15	



Art.	D ∅	E	F	G	H	Support material	Cup art.	Weight g
00 08 21	12	17	13	10	27	aluminium	01 35 15	9.3
							01 40 15	
							01 45 15	

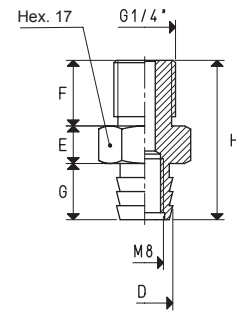


Art.	D ∅	E	F	G	H	Support material	Cup art.	Weight g
00 08 22	25	10	14	7.5	25	aluminium	01 45 10	5.9
							01 60 10	

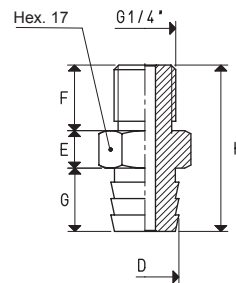
Conversion ratio: inch = $\frac{\text{mm}}{25.4}$, pounds = $\frac{\text{g}}{453.6} = \frac{\text{Kg}}{0.4536}$

GAS - NPT thread adapters available at page 1.117

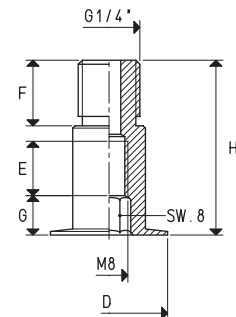
Art.	D ∅	E	F	G	H	Support material	Cup art.	Weight g
00 08 24	12	8	14	12	34	aluminium	01 50 20	10.3
							01 65 28	



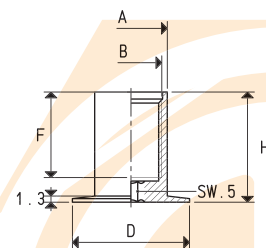
Art.	D ∅	E	F	G	H	Support material	Cup art.	Weight g
00 08 26	14.5	8	14	13.5	35.5	aluminium	01 52 50	13.5



Art.	D ∅	E	F	G	H	Support material	Cup art.	Weight g
00 08 28	25	12	14	8	37.3	aluminium	01 85 10	13.4

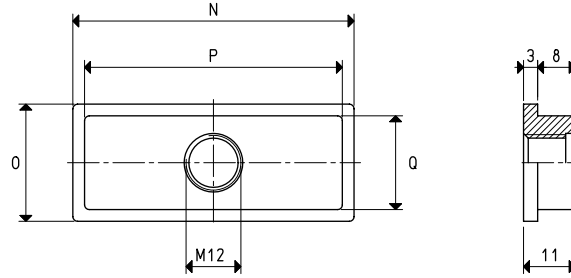


Art.	A ∅	B	D	F	H	Support material	Cup art.	Weight g
00 08 29	15.5	M12	25	18	23.5	aluminium	01 85 10	6.6

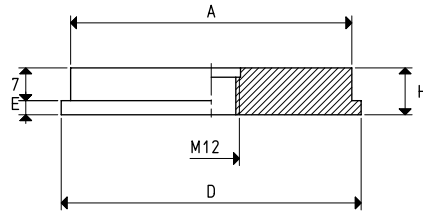


Conversion ratio: inch = $\frac{\text{mm}}{25.4}$; pounds = $\frac{\text{g}}{453.6}$ = $\frac{\text{Kg}}{0.4536}$

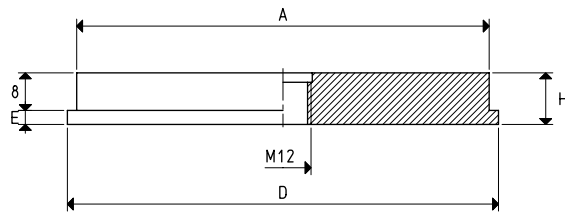
GAS - NPT thread adapters available at page 1.117



Art.	N	O	P	Q	Support material	Cup art.	Weight g
00 08 31	60	25	55	20	aluminium	01 40 75	34.1

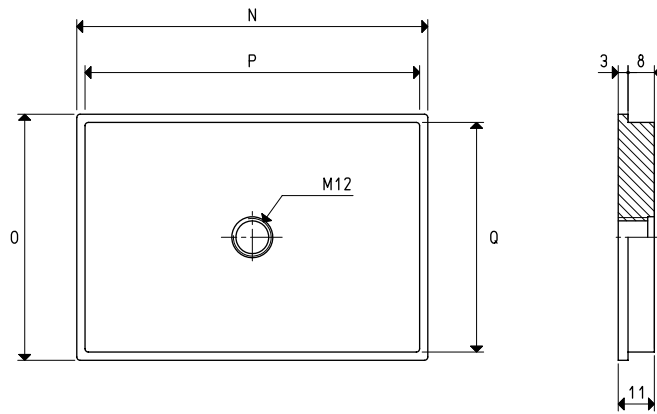


Art.	A	D	E	H	Support material	Cup art.	Weight g
00 08 32	60	64	3	10	aluminium	01 64 15	80.6
						01 65 15	
						01 85 15	

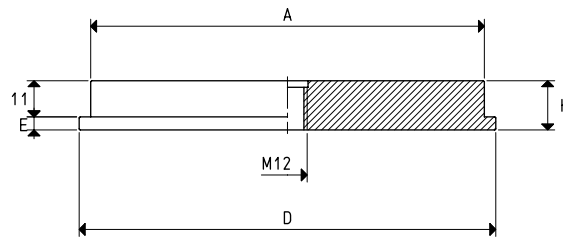


Art.	A	D	E	H	Support material	Cup art.	Weight g
00 08 33	88	92	3	11	aluminium	01 92 15	188.9
						01 110 10	

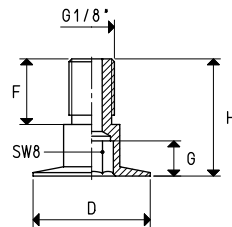
Conversion ratio: inch = $\frac{mm}{25.4}$; pounds = $\frac{g}{453.6} = 0.4536$



Art.	N	Q	P	Q	Support material	Cup art.	Weight g
00 08 34	107	75	102	70	aluminium	01 107 75	215.5
						01 120 90	



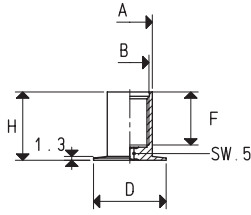
Art.	A	D	E	H	Support material	Cup art.	Weight g
00 08 35	120	127	4	15	aluminium	01 150 10	471.3



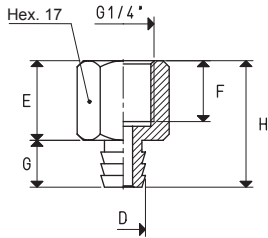
Art.	D	F	G	H	Support material	Cup art.	Weight g
00 08 44	25	14	7.5	25	aluminium	01 45 10	5.1
						01 60 10	

Conversion ratio: inch = $\frac{mm}{25.4}$; pounds = $\frac{g}{453.6} = \frac{Kg}{0.4536}$

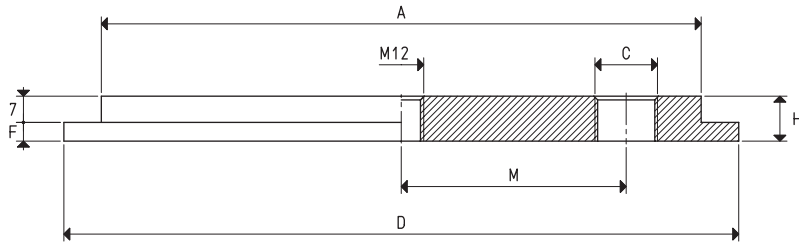
GAS-NPT thread adapters available at page 1.117



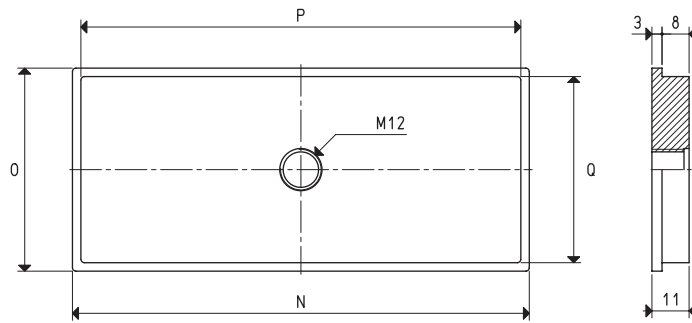
Art.	A	B	D	F	H	Support material	Cup art.	Weight g
00 08 46	15.5	G1/4"	25	18	23.5	aluminium	01 85 10	6.5



Art.	D	E	F	G	H	Support material	Cup art.	Weight g
00 08 50	9.5	17	13	10	27	aluminium	01 16 26	8.5
							01 30 50	
							01 30 55	
							01 30 99	
							01 40 50	



Art.	A	C	D	F	H	M	Support material	Cup art.	Weight g
00 08 58	160	G3/8"	180	5	12	60	aluminium	01 180 15	740.0

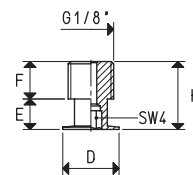


Art.	N	O	P	Q	Support material	Cup art.	Weight g
00 08 59	135	60	130	55	aluminium	01 135 60	218.4
						01 150 75	

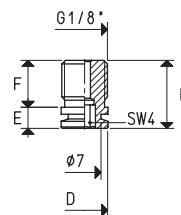
Conversion ratio: inch = $\frac{\text{mm}}{25.4}$, pounds = $\frac{\text{g}}{453.6} = 0.4536$ Kg

GAS - NPT thread adapters available at page 1.117

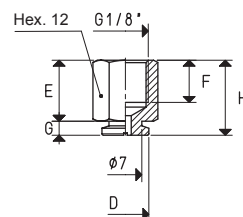
Art.	D ∅	E	F	H	Support material	Cup art.	Weight g
00 08 60	12	6.5	8	14.5	brass	01 19 17	5.6
						01 20 08	
						01 20 60	
						01 25 08	
						01 25 10	
						01 26 10	
						01 30 10	
						01 35 10	



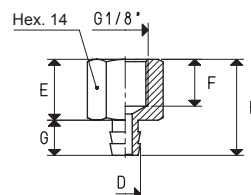
Art.	D ∅	E	F	H	Support material	Cup art.	Weight g
00 08 61	10	4.5	10	14.5	brass	01 18 50	6.5
						01 20 60	



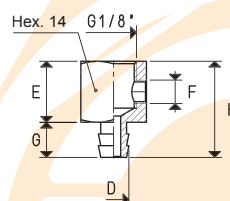
Art.	D ∅	E	F	G	H	Support material	Cup art.	Weight g
00 08 62	10	13	9	3	16	brass	01 18 50	9.4
							01 20 60	



Art.	D ∅	E	F	G	H	Support material	Cup art.	Weight g
00 08 64	6.5	13	10	7.5	20.5	brass	01 14 15	13.9
							01 15 23	
							01 18 12	
							01 18 23	
							01 18 29	
							01 18 35	

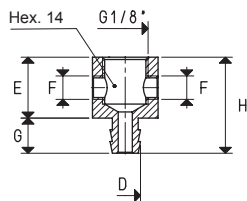


Art.	D ∅	E	F	G	H	Support material	Cup art.	Weight g
00 08 65	6.5	13	M5	7.5	20.5	brass	01 14 15	13.7
							01 15 23	
							01 18 12	
							01 18 23	
							01 18 29	
							01 18 35	

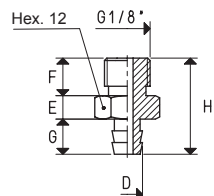


Conversion ratio: inch = $\frac{\text{mm}}{25.4}$; pounds = $\frac{\text{g}}{453.6}$ = $\frac{\text{Kg}}{0.4536}$

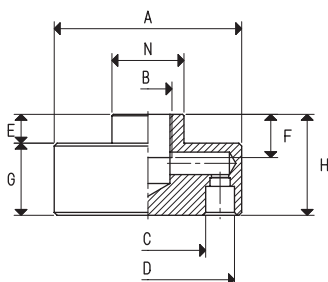
GAS - NPT thread adapters available at page 1.117



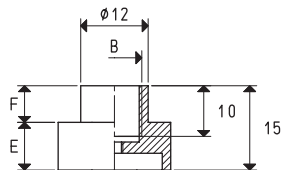
Art.	D	E	F	G	H	Support material	Cup art.	Weight g
00 08 66	6.5	13	M5	7.5	20.5	brass	01 14 15	13.5
							01 15 23	
							01 18 12	
							01 18 23	
							01 18 29	
							01 18 35	



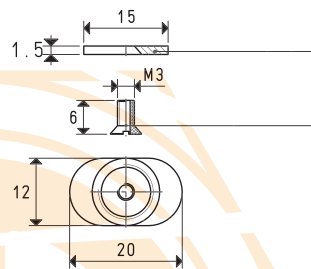
Art.	D	E	F	G	H	Support material	Cup art.	Weight g
00 08 67	6.5	5	8	7.5	20.5	brass	01 14 15	11.4
							01 15 23	
							01 18 12	
							01 18 23	
							01 18 29	
							01 18 35	



Art.	A	B	C	D	E	F	G	H	N	Support material	Cup art.	Weight g
00 08 68	40	M12	23	35	7	10	18	25	20	aluminium	01 46 13	47.2
00 08 72	65	G3/8"	40	60	10	15	25	35	25	aluminium	01 73 14	169.1
00 08 73	76	G3/8"	51	71	10	15	27	37	25	aluminium	01 95 14	266.0



Art.	B	E	F	Support material	Cup art.	Weight g
00 08 70	G1/8"	8.5	6.5	aluminium	01 12 20	5.4



Fixing plate art. 00 08 97

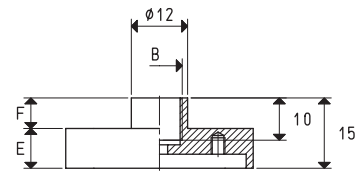
TSP perforated screw M3x5 art. 00 08 103

Note: By ordering art. 00 08 70 you will also receive the fixing plate and the TSP perforated screw

Conversion ratio: inch = $\frac{\text{mm}}{25.4}$; pounds = $\frac{\text{g}}{453.6} = \frac{\text{Kg}}{0.4536}$

GAS - NPT thread adapters available at page 1.117

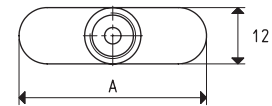
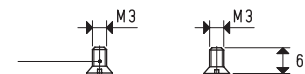
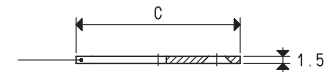
Art.	A	B ∅	C	E	F	Support material	Cup art.	Weight g
00 08 71	30	G1/8"	25	8.5	6.5	aluminium	01 12 30	7.8
00 08 75	40	G1/8"	35	8.5	6.5	aluminium	01 12 40	11.4
00 08 76	55	G1/8"	50	8.5	6.5	aluminium	01 12 50	15.5



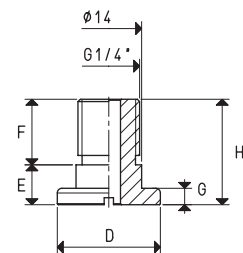
Fixing plate art. **00 08 98** for supp. **00 08 71**
 art. **00 08 99** for supp. **00 08 75**
 art. **00 08 100** for supp. **00 08 76**

2 TSP screws M3x5 art. **00 08 102**

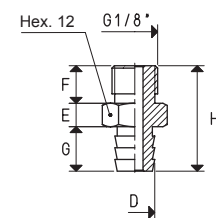
Note: By ordering the article associated with the support, the fixing plate and the TSP screws will also be provided.



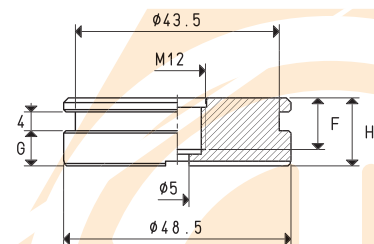
Art.	D ∅	E	F	G	H	Support material	Cup art.	Weight g
00 08 81	22	8.5	14	3.5	22.5	aluminium	01 40 18	8.8
							01 48 18	
							01 54 18	



Art.	D ∅	E	F	G	H	Support material	Cup art.	Weight g
00 08 82	8.5	5	8	9.5	22.5	brass	01 25 12	11.2
							01 33 50	

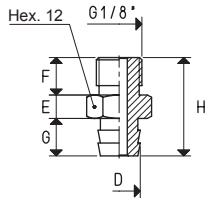


Art.	F	G	H	Support material	Cup art.	Weight g
00 08 83	11	7.5	14.5	aluminium	01 56 15	67.4

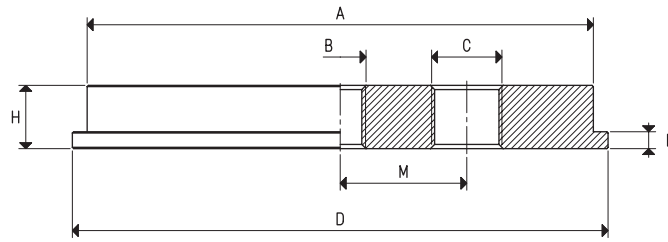


Conversion ratio: inch = $\frac{\text{mm}}{25.4}$; pounds = $\frac{\text{g}}{453.6} = \frac{\text{Kg}}{0.4536}$

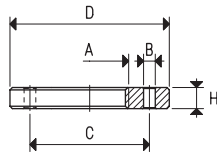
GAS - NPT thread adapters available at page 1.117



Art.	D	E	F	G	H	Support material	Cup art.	Weight g
00 08 101	∅ 9	5	8	8	21	brass	01 25 14	10.8

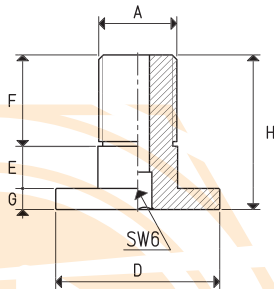


Art.	A	B	C	D	F	H	M	Support material	Cup art.	Weight g
00 08 107	∅ 120	M12	G3/8"	∅ 127	4	15	30	aluminium	01 127 15 01 150 10	476.9



RING NUT

Art.	A	B	C	D	H	Ring nut material	Support art.	Weight g
00 08 109	G1/4"	2.5	25.5	∅ 34	4.5	aluminium	00 08 108	9.8
00 08 111	G3/8"	2.5	25.5	∅ 34	4.5	aluminium	00 08 110	8.7
00 08 113	G3/8"	4.0	45.0	∅ 69	6.0	aluminium	00 08 112	58.2



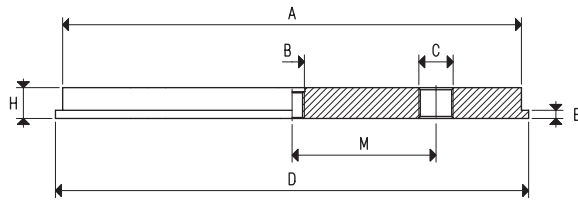
SUPPORT

Art.	A	D	E	F	G	H	Support material	Cup art.	Weight g
00 08 108	G1/4"	∅ 35	9	19.5	4.5	33.0	aluminium	01 76 24	21.4
								01 90 24	
								01 110 24	
00 08 110	G3/8"	∅ 35	9	19.5	4.5	33.0	aluminium	01 76 24	25.0
								01 90 24	
								01 110 24	
00 08 112	G3/8"	∅ 69	15	22.0	5.5	42.5	aluminium	01 150 36	73.9

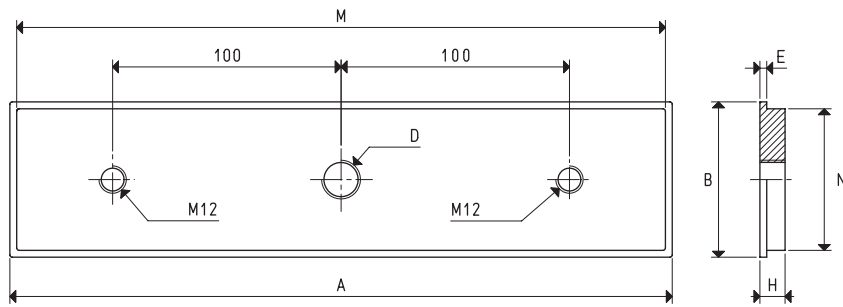
Note: By ordering the support, you will automatically receive its associated ring nut.

Conversion ratio: $\text{inch} = \frac{\text{mm}}{25.4}$; $\text{pounds} = \frac{\text{g}}{453.6} = \frac{\text{Kg}}{0.4536}$

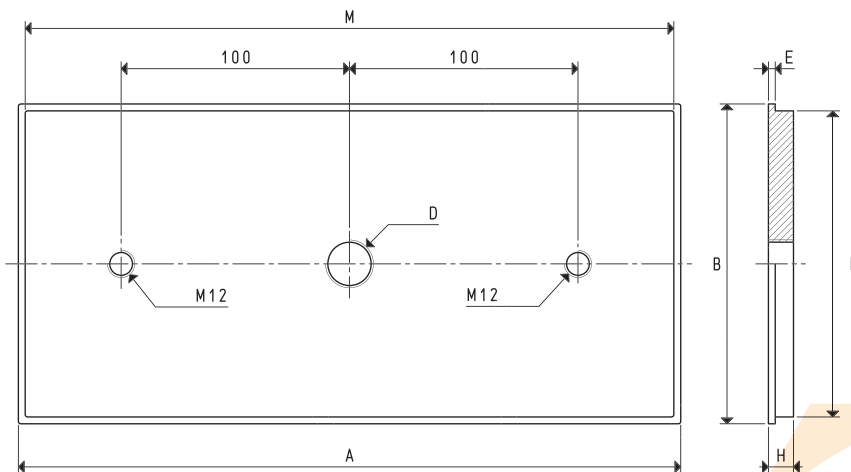
GAS - NPT thread adapters available at page 1.117



Art.	A	B	C	D	E	H	M	Support material	Cup art.	Weight Kg
00 08 115	223	M12	G3/8"	230	5	15	70	aluminium	01 250 20	1.65



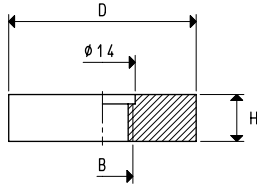
Art.	A	B	D	E	H	M	N	Support material	Cup art.	Weight Kg
00 08 116	290	68	G3/8"	3	11	284	62	aluminium	01 290 68 01 300 80	0.53



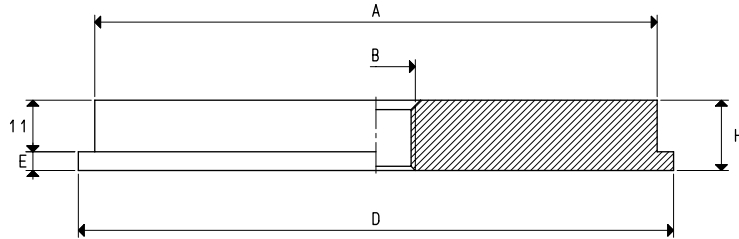
Art.	A	B	D	E	H	M	N	Support material	Cup art.	Weight Kg
00 08 117	290	140	G1/2"	3	11	284	134	aluminium	01 290 140 01 300 150	1.13

Conversion ratio: inch = $\frac{mm}{25.4}$; pounds = $\frac{g}{453.6} = \frac{Kg}{0.4536}$

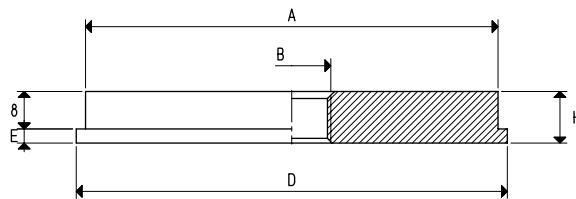
GAS - NPT thread adapters available at page 1.117



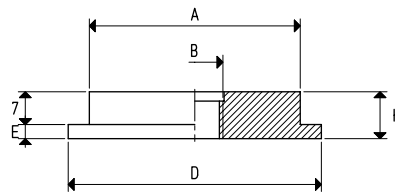
Art.	B	D	H	Support material	Cup art.	Weight g
00 08 118	G1/4"	40	10	aluminium	01 42 15	32.1



Art.	A	B	D	E	H	Support material	Cup art.	Weight g
00 08 119	120	G3/8"	127	4	15	aluminium	01 150 10	478.9



Art.	A	B	D	E	H	Support material	Cup art.	Weight g
00 08 123	88	G3/8"	92	3	11	aluminium	01 110 10 01 92 15	186.1

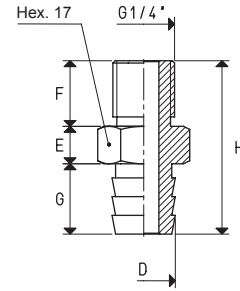


Art.	A	B	D	E	H	Support material	Cup art.	Weight g
00 08 126	45	M12	54	3	10	aluminium	01 75 42 01 80 20	45.5

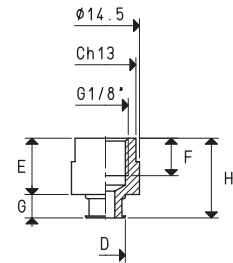
Conversion ratio: $\text{inch} = \frac{\text{mm}}{25.4}$, $\text{pounds} = \frac{\text{g}}{453.6} = \frac{\text{Kg}}{0.4536}$

GAS - NPT thread adapters available at page 1.117

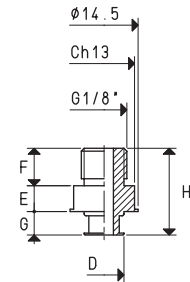
Art.	D	E	F	G	H	Support material	Cup art.	Weight g
	∅							
00 08 127	13.5	8	14	15	37	aluminium	01 40 25 01 56 30 01 75 30	24.7



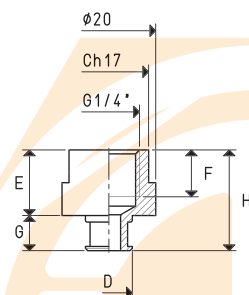
Art.	D	E	F	G	H	Support material	Cup art.	Weight g
	∅							
00 08 132	8.5	12	8	5	17	aluminium	01 20 23 01 22 19 01 34 26	3.8



Art.	D	E	F	G	H	Support material	Cup art.	Weight g
	∅							
00 08 133	8.5	5.5	8	5	18.5	aluminium	01 20 23 01 22 19 01 34 26	3.5

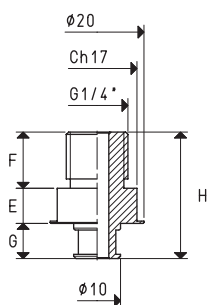


Art.	D	E	F	G	H	Support material	Cup art.	Weight g
	∅							
00 08 134	10	14	10	7.5	21.5	aluminium	01 30 32 01 40 42 01 43 28	8.3

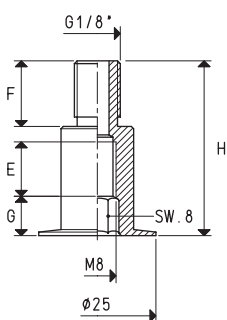


Conversion ratio: inch = $\frac{mm}{25.4}$; pounds = $\frac{g}{453.6} = \frac{Kg}{0.4536}$

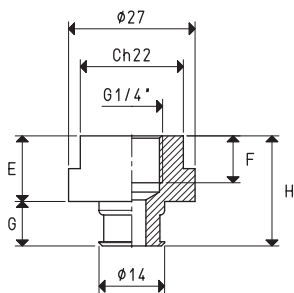
GAS - NPT thread adapters available at page 1.117



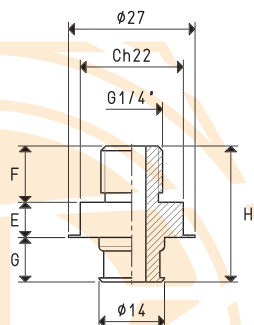
Art.	E	F	G	H	Support material	Cup art.	Weight g
00 08 135	7.5	12	7.5	27	aluminium	01 30 32	9.5
						01 40 42	
						01 43 28	



Art.	E	F	G	H	Support material	Cup art.	Weight g
00 08 136	12	14	8	37.3	aluminium	01 85 10	9.2



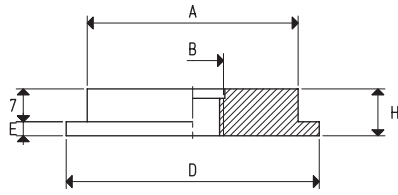
Art.	E	F	G	H	Support material	Cup art.	Weight g
00 08 141	14	10	9.5	23.5	aluminium	01 50 53	19.7
						01 53 35	



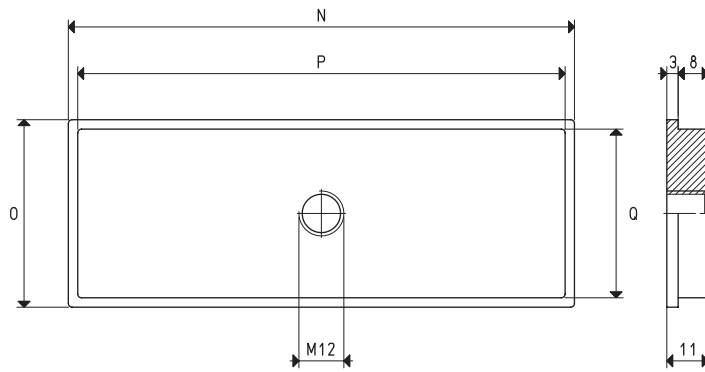
Art.	E	F	G	H	Support material	Cup art.	Weight g
00 08 142	7.5	12	9.5	29	aluminium	01 50 53	15.7
						01 53 35	

Conversion ratio: inch = $\frac{\text{mm}}{25.4}$, pounds = $\frac{\text{g}}{453.6} = \frac{\text{Kg}}{0.4536}$

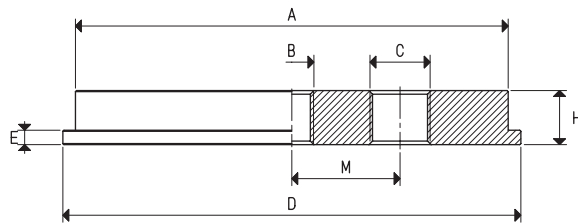
GAS - NPT thread adapters available at page 1.117



Art.	A	B	D	E	H	Support material	Cup art.	Weight g
00 08 143	45	G1/2"	54	3	10	aluminium	01 75 42 01 80 20	41.5

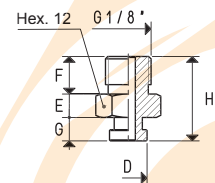


Art.	N	O	P	Q	Support material	Cup art.	Weight g
00 08 144	135	50	130	45	aluminium	01 135 50 01 150 65	176.1



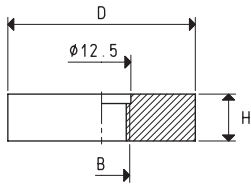
Art.	A	B	C	D	E	H	M	Support material	Cup art.	Weight g
00 08 145	120	G3/8"	G3/8"	127	4	15	27	aluminium	01 150 10	471.9

Art.	D	E	F	G	H	Support material	Cup art.	Weight g
00 08 146	8	5	8	5	18	brass	01 20 12 01 20 14 01 20 15	9.8

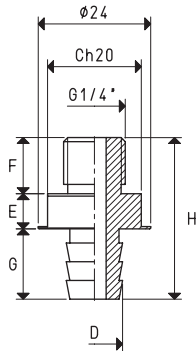


Conversion ratio: inch = $\frac{mm}{25.4}$; pounds = $\frac{g}{453.6}$ = $\frac{Kg}{0.4536}$

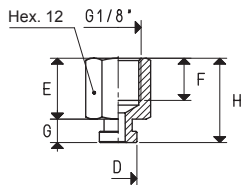
GAS - NPT thread adapters available at page 1.117



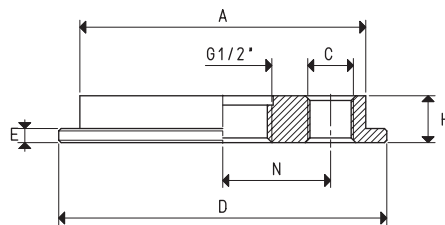
Art.	B	D	H	Support supporto	Cup art.	Weight g
00 08 147	M12	40	10	aluminium	01 42 15	32.8



Art.	D	E	F	G	H	Support material	Cup art.	Weight g
00 08 148	12	7.5	12	15	34.5	aluminium	01 50 70	14.5



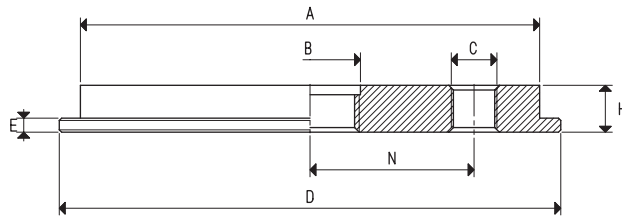
Art.	D	E	F	G	H	Support material	Cup art.	Weight g
00 08 155	8	13	9	5	18	brass	01 20 12	9.1
							01 20 14	
							01 20 15	



Art.	A	C	D	E	N	H	Support material	Cup art.	Weight g
00 08 162	61	G1/8"	70	3	23	10	aluminium	01 110 58	78.9

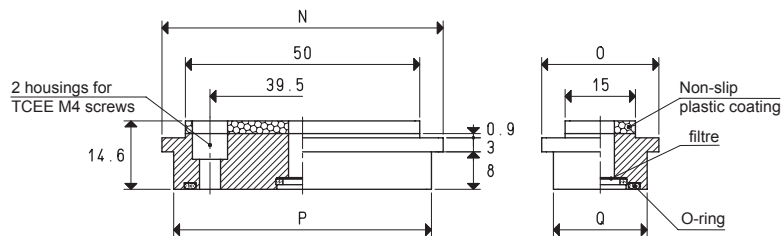
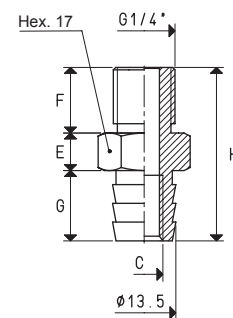
Conversion ratio: inch = $\frac{mm}{25.4}$, pounds = $\frac{g}{453.6} = \frac{Kg}{0.4536}$

GAS - NPT thread adapters available at page 1.117

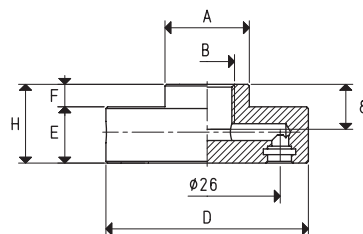


Art.	A	B	C	D	E	N	H	Support material	Cup art.	Weight g
00 08 163	98	G1/2"	G1/8"	107	3	35	10	aluminium	01 150 74	211.8

Art.	C	E	F	G	H	Support material	Cup art.	Weight g
00 08 172	M8	8	14	15	37	aluminium	01 40 25 01 56 30 01 75 30	15.2



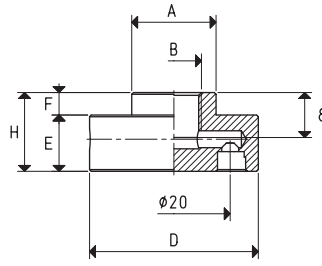
Art.	N	O	P	Q	Support material	Cup art.	Weight g
00 08 184	60	25	55	20	aluminium	01 40 75	38.7



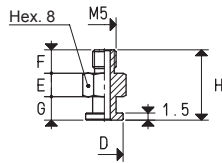
Art.	A	B	D	E	F	H	Support material	Cup art.	Weight g
00 08 231	15	G1/8"	36	10	4	14	aluminium	01 31 06	24.9

Conversion ratio: inch = $\frac{\text{mm}}{25.4}$; pounds = $\frac{\text{g}}{453.6} = \frac{\text{Kg}}{0.4536}$

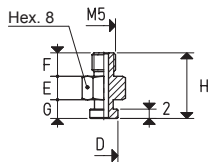
GAS - NPT thread adapters available at page 1.117



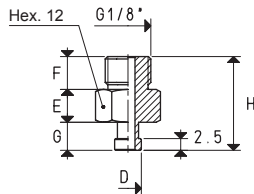
Art.	A	B	D	E	F	H	Support material	Cup art.	Weight g
00 08 232	15	G1/8"	30	10	4	14	aluminium	01 24 06	16.7



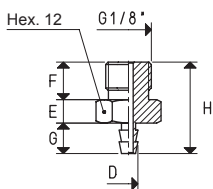
Art.	D	E	F	G	H	Support material	Cup art.	Weight g
00 08 236	8	5	5	5	15	brass	01 07 13	3.0



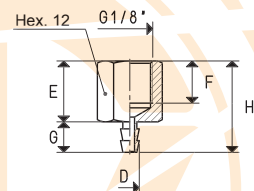
Art.	D	E	F	G	H	Support material	Cup art.	Weight g
00 08 237	6	5	5	4	14	brass	01 08 07	3.0



Art.	D	E	F	G	H	Support material	Cup art.	Weight g
00 08 238	5.7	7	7	6	20	brass	01 11 08	7.0



Art.	D	E	F	G	H	Support material	Cup art.	Weight g
00 08 239	4	5	8	6.5	19.5	brass	01 14 09	8.0

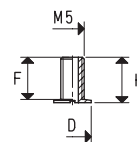


Art.	D	E	F	G	H	Support material	Cup art.	Weight g
00 08 240	4	13	9	6.5	19.5	brass	01 14 09	7.0

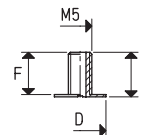
Conversion ratio: inch = $\frac{\text{mm}}{25.4}$, pounds = $\frac{\text{g}}{453.6} = \frac{\text{Kg}}{0.4536}$

GAS - NPT thread adapters available at page 1.117

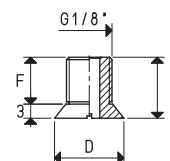
Art.	D ∅	F	H	Support material	Cup Art.	Weight g
00 08 241	8	9	10	brass	01 15 04	1.5



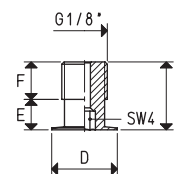
Art.	D ∅	F	H	Support material	Cup Art.	Weight g
00 08 242	11	9	9.5	brass	01 20 04	1.8



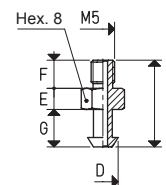
Art.	D ∅	F	H	Support material	Cup Art.	Weight g
00 08 243	15	10	13	brass	01 20 06	6.0



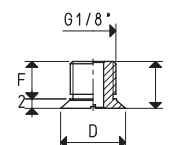
Art.	D ∅	E	F	H	Support material	Cup Art.	Weight g
00 08 244	14	6.5	8	14.5	brass	01 35 12	5.9



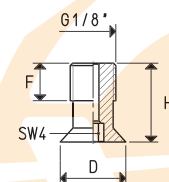
Art.	D ∅	E	F	G	H	Support material	Cup Art.	Weight g
00 08 245	6.5	4.5	6	8	18.5	brass	01 20 11	2.7



Art.	D ∅	F	H	Support material	Cup Art.	Weight g
00 08 246	14	8	10	brass	01 22 06	5.0

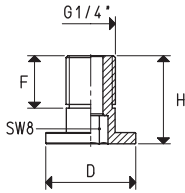


Art.	D ∅	F	H	Support material	Cup Art.	Weight g
00 08 247	14	8	17	brass	01 40 14	8.4

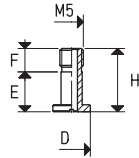


Conversion ratio: inch = $\frac{\text{mm}}{25.4}$; pounds = $\frac{\text{g}}{453.6}$ = $\frac{\text{Kg}}{0.4536}$

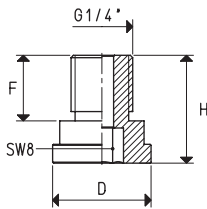
GAS - NPT thread adapters available at page 1.117



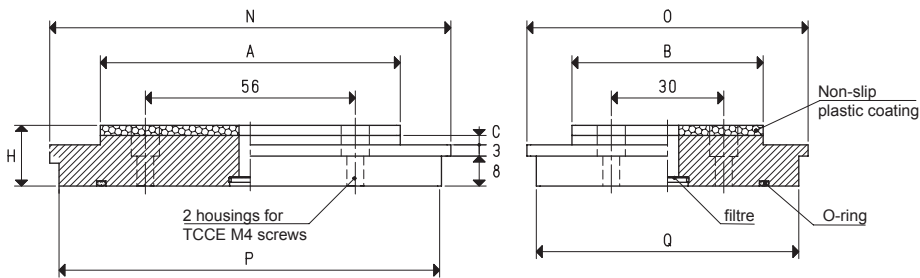
Art.	D ∅	F	H	Support material	Cup art.	Weight g
00 08 248	24	14	23.5	aluminium	01 54 18	5.8



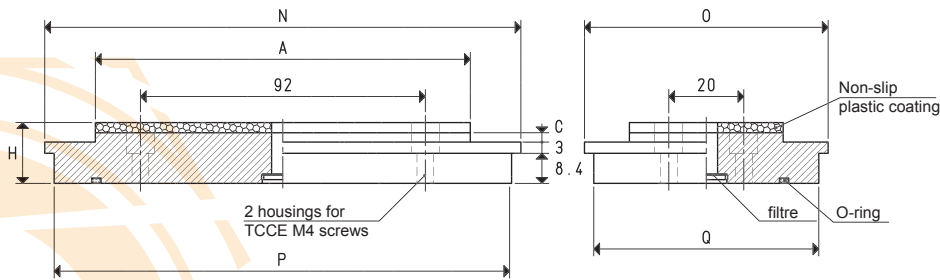
Art.	D ∅	E	F	H	Support material	Cup art.	Weight g
00 08 249	8	8.5	5	13.5	brass	01 31 12	1.8



Art.	D ∅	F	H	Support material	Cup art.	Weight g
00 08 250	21	14	23	aluminium	01 32 30	8.6



Art.	A	B	C	H	N	O	P	Q	Support material	Cup art.	Weight g
00 08 256	80	51	2.5	16.6	107	75	102	70	aluminium	01 120 90	244.5



Art.	A	B	C	H	N	O	P	Q	Support material	Cup art.	Weight g
00 08 257	110	35	2.3	16.4	135	60	130	55	aluminium	01 150 75	247.9

Conversion ratio: inch = $\frac{\text{mm}}{25.4}$; pounds = $\frac{\text{g}}{453.6}$ = $\frac{\text{Kg}}{0.4536}$ GAS - NPT thread adapters available at page 1.117