



These cups are specially designed for gripping moulded or drawn sheet metal and are largely used in the automotive sector. Their ground lip allows an immediate gripping of the load to be lifted as soon as contact is made and ensures perfect vacuum seal.

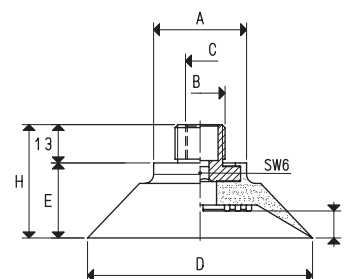
These cups are produced in a special compound called BENZ, able to withstand chlorine usually contained in the oils used for moulding and drawing the sheet metal.

The galvanised steel support is vulcanised onto the cup. They are obviously available also in natural para rubber and silicon.

CUPS WITH MALE VULCANISED SUPPORT

| Art. | Force Kg | A Ø | B Ø | C Ø | D Ø | E | G | H | Support material | Weight g |
|------------------|-------------|--------|-----------|--------|--------|------|------|------|---------------------|-------------|
| 08 50 40 * | 4.90 | 31 | G3/8" | -- | 50 | 16.0 | 6.5 | 29.0 | steel | 38.5 |
| 08 50 40 GR * | 4.90 | 31 | G3/8" | G1/8" | 50 | 16.0 | 6.5 | 29.0 | steel | 38.5 |
| 08 75 40 * | 11.04 | 31 | G3/8" | -- | 75 | 25.0 | 9.0 | 38.0 | steel | 57.9 |
| 08 75 40 GR * | 11.04 | 31 | G3/8" | G1/8" | 75 | 25.0 | 9.0 | 38.0 | steel | 57.9 |
| 08 100 40 * | 19.62 | 32 | G3/8" | -- | 100 | 26.0 | 9.0 | 39.0 | steel | 78.3 |
| 08 100 40 GR * | 19.62 | 32 | G3/8" | G1/8" | 100 | 26.0 | 9.0 | 39.0 | steel | 78.3 |
| 08 100 50 * | 19.62 | 32 | G3/8" | -- | 100 | 30.5 | 15.0 | 43.5 | steel | 74.8 |
| 08 100 50 GR * | 19.62 | 32 | G3/8" | G1/8" | 100 | 30.5 | 15.0 | 43.5 | steel | 74.8 |
| 08 50 40 1/4" * | 4.90 | 31 | G1/4" | -- | 50 | 16.0 | 6.5 | 29.0 | steel | 37.4 |
| 08 75 40 1/4" * | 11.04 | 31 | G1/4" | -- | 75 | 25.0 | 9.0 | 38.0 | steel | 57.6 |
| 08 100 40 1/4" * | 19.62 | 32 | G1/4" | -- | 100 | 26.0 | 9.0 | 39.0 | steel | 76.8 |
| 08 100 50 1/4" * | 19.62 | 32 | G1/4" | -- | 100 | 30.5 | 15.0 | 43.5 | steel | 74.3 |
| 08 50 40 M10 * | 4.90 | 31 | M10 | -- | 50 | 16.0 | 6.5 | 29.0 | steel | 32.7 |
| 08 75 40 M10 * | 11.04 | 31 | M10 | -- | 75 | 25.0 | 9.0 | 38.0 | steel | 49.9 |
| 08 100 40 M10 * | 19.62 | 32 | M10 | -- | 100 | 26.0 | 9.0 | 39.0 | steel | 72.1 |
| 08 100 50 M10 * | 19.62 | 32 | M10 | -- | 100 | 30.5 | 15.0 | 43.5 | steel | 70.2 |
| 08 50 40 M14 * | 4.90 | 31 | M14 x 1.5 | -- | 50 | 16.0 | 6.5 | 29.0 | steel | 34.8 |
| 08 75 40 M14 * | 11.04 | 31 | M14 x 1.5 | -- | 75 | 25.0 | 9.0 | 38.0 | steel | 54.9 |
| 08 100 50 M14 * | 19.62 | 32 | M14 x 1.5 | -- | 100 | 30.5 | 15.0 | 43.5 | steel | 74.9 |

* Complete the code indicating the compound: B= BENZ rubber; N= natural para rubber; S= silicon



CUPS WITH FEMALE VULCANISED SUPPORT

| Art. | Force Kg | A Ø | B Ø | D Ø | E | G | H | Support material | Weight g |
|---------------|-------------|--------|--------|--------|------|------|------|---------------------|-------------|
| 08 50 40 F * | 4.90 | 31 | G3/8" | 50 | 16.0 | 6.5 | 32.5 | steel | 49.5 |
| 08 75 40 F * | 11.04 | 31 | G3/8" | 75 | 25.0 | 9.0 | 41.5 | steel | 68.3 |
| 08 100 40 F * | 19.62 | 32 | G3/8" | 100 | 26.0 | 9.0 | 42.5 | steel | 89.3 |
| 08 100 50 F * | 19.62 | 32 | G3/8" | 100 | 30.5 | 15.0 | 47.0 | steel | 88.8 |

* Complete the code indicating the compound: B= BENZ rubber; N= natural para rubber; S= silicon

