

Foam rubber cups are made with a special compound called GERANIUM indicated with OF, with a density that allows them to grip uneven and very rough surfaces and still maintain their elasticity even after many working cycles.

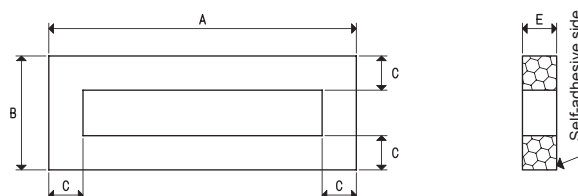
These foam rubber cups have a self-adhesive side for a quick fixing to their support. These cups have been designed for handling loads with raw or very rough surfaces (sawn, bushammered or flamed marble, textured, non-slip or profiled metal sheet, striped plexiglas, raw cement manufactures, garden tiles with fret, etc.) and for all those cases in which traditional cups cannot be used. In case of lubricated gripping surfaces, we recommend using neoprene foam rubber NF.

The working temperature ranges from -40 °C to +80 °C for GERANIUM foam rubber OF and from -20 °C to +80 °C for neoprene foam rubber NF.

Their supports are made with anodised aluminium and they are provided with a central threaded hole to allow its fastening to the machine.

Larger supports, on the other hand, are provided with two threaded holes equidistant from the centre, for the possible insertion of guiding, anti-rotation pins.

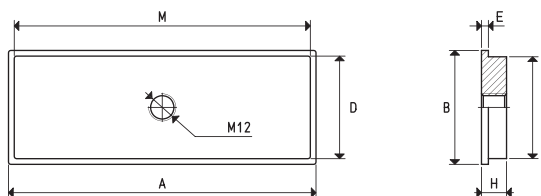
For the spare part, all you have to do is request the cup indicated in the table in the desired compound.



### CUPS

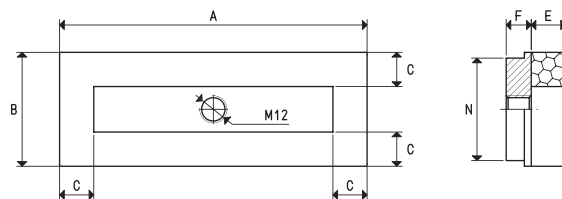
Art.	Force Kg	A	B	C	E
01 107 75 *	9.0	107	75	15	15
01 135 50 *	6.0	135	50	15	15
01 135 60 *	8.0	135	60	15	15

\* Complete the code indicating the compound: OF= geranium foam rubber; NF= neoprene foam rubber



### SUPPORTS

Art.	A	B	D	E	H	M	N	Support material	Cup art.	Weight g
00 08 34	107	75	70	3	11	102	70	aluminium	01 107 75	215.5
00 08 144	135	50	45	3	11	130	45	aluminium	01 135 50	176.1
00 08 59	135	60	55	3	11	130	55	aluminium	01 135 60	218.4

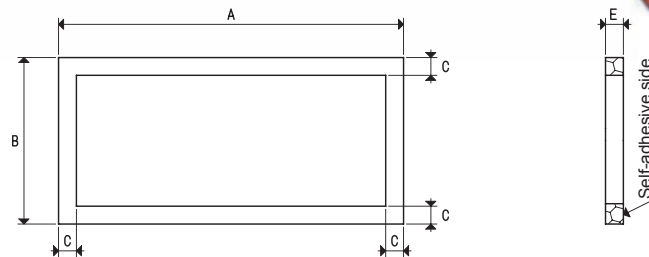
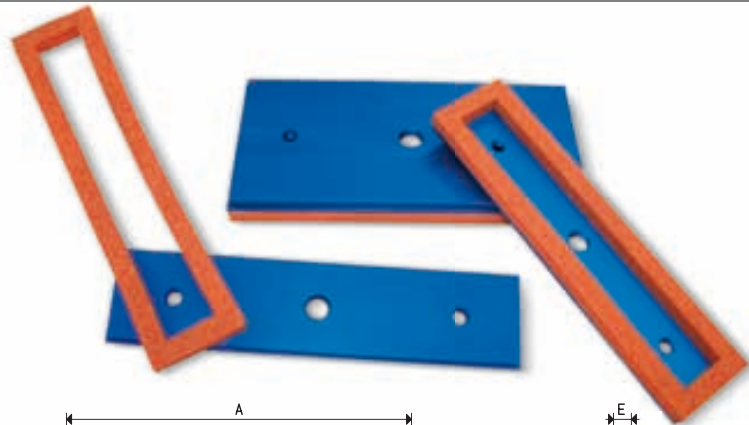


### CUPS WITH SUPPORT

Art.	Force Kg	A	B	C	E	F	N	Cup Art.	Support. Art.	Weight g
08 107 75 *	9	107	75	15	15	11	70	01 107 75	00 08 34	229.5
08 135 50 *	6	135	50	15	15	11	45	01 135 50	00 08 144	190.6
08 135 60 *	8	135	60	15	15	11	55	01 135 60	00 08 59	233.0

\* Complete the code indicating the compound: OF= geranium foam rubber; NF= neoprene foam rubber

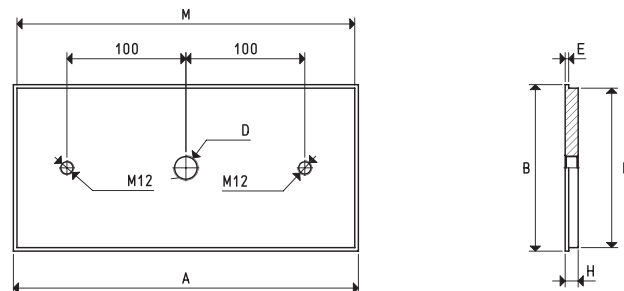
$$\text{Conversion ratio: inch} = \frac{\text{mm}}{25.4} \quad \text{pounds} = \frac{\text{g}}{453.6} = \frac{\text{Kg}}{0.4536}$$



### CUPS

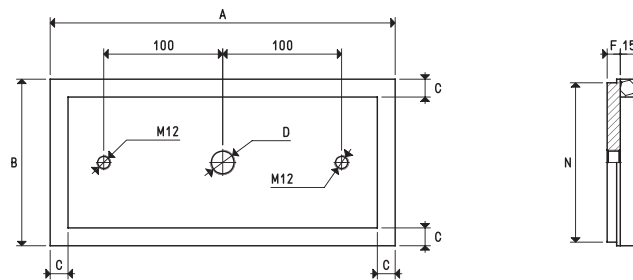
Art.	Force Kg	A	B	C	E
01 290 68 *	25	290	68	15	15
01 290 140 *	72	290	140	15	15

\* Complete the code indicating the compound: OF= geranium foam rubber; NF= neoprene foam rubber



### SUPPORTS

Art.	A	B	D Ø	E	H	M	N	Support material	Cup art.	Weight Kg
00 08 116	290	68	G3/8"	3	11	284	62	aluminium	01 290 68	0.53
00 08 117	290	140	G1/2"	3	11	284	134	aluminium	01 290 140	1.13



### CUPS WITH SUPPORT

Art.	Force Kg	A	B	C	D Ø	F	N	Cup Art.	Support Art.	Weight Kg
08 290 68 *	25	290	68	15	G3/8"	11	62	01 290 68	00 08 116	0.56
08 290 140 *	72	290	140	15	G1/2"	11	134	01 290 140	00 08 117	1.15

\* Complete the code indicating the compound: OF= geranium foam rubber; NF= neoprene foam rubber

Conversion ratio: inch =  $\frac{\text{mm}}{25.4}$ ; pounds =  $\frac{\text{g}}{453.6} = \frac{\text{Kg}}{0.4536}$

GAS - NPT thread adapters available at page 1.117