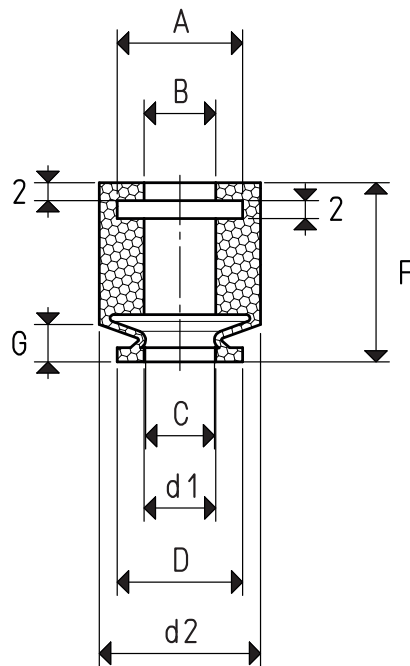


These vacuum cups have been designed and manufactured for the pharmaceutical sector. They are used for handling syringes that are filled with liquid and capped during their transfer, making use of the internal passages on the special supports (not supplied) on which they are fitted. Due to their specific use, they are produced only in different hardness silicone compounds, according to FDA regulations.



### VACUUM CUPS

Item	Force Kg	A Ø	B Ø	C Ø	D Ø	d1 Ø	d2 Ø	G	F	Hardness Sh. A	Colour
<b>01 13 20 S 70 SH FDA</b>	0.36	15.0	10.0	9.0	13.5	9.0	18.0	4.2	20.0	70	transparent
<b>01 13 20 S FDA</b>	0.36	15.0	10.0	9.0	13.5	9.0	18.0	4.2	20.0	45	transparent
<b>01 14 20 S 70 SH FDA</b>	0.38	14.0	8.0	7.6	14.0	8.0	18.0	4.0	20.0	70	transparent
<b>01 18 21 S 70 SH FDA</b>	0.63	15.0	10.0	10.2	18.0	10.5	18.0	5.6	21.5	70	transparent
<b>01 22 20 S 70 SH FDA</b>	1.01	21.0	16.0	13.0	22.7	13.0	24.0	4.4	20.0	70	transparent
<b>01 22 20 S FDA</b>	1.01	21.0	16.0	13.0	22.7	13.0	24.0	4.4	20.0	45	transparent
<b>01 27 20 S 70 SH FDA</b>	1.44	22.5	17.5	16.2	27.0	16.2	27.5	4.2	20.0	70	transparent
<b>01 27 20 S FDA</b>	1.48	22.5	17.5	16.2	27.5	16.2	27.5	4.2	20.0	45	transparent

Compound: S= silicone