

## FITTINGS AUS EDELSTAHL

### STAINLESS STEEL FITTINGS

#### FEATURES

- Abdeckung hoher Ansprüche durch Edelstahl
- für verschiedenste Einsatzzwecke
- für Anschlüsse von 1/8" bis 2"
- *High requirements covered due to stainless steel*
- *For various applications*
- *For connections from 1/8" to 2"*



**TECHNISCHE DATEN**

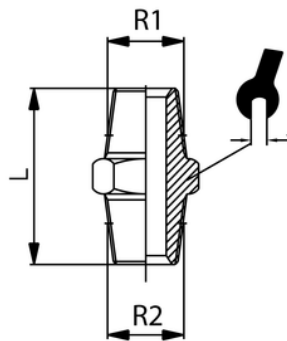
Betriebstemperatur	max. +200°C
Betriebsdruck	bis 16 bar
Werkstoffe	Edelstahl AISI 316
Gewinde	DIN 3852 DIN 3858

**TECHNICAL DATA**

<i>Operating temperature</i>	<i>Max +200°C</i>
<i>Operating pressure</i>	<i>Up to 16 bar</i>
<i>Materials</i>	<i>Stainless steel AISI 316</i>
<i>Thread</i>	<i>DIN 3852 DIN 3858</i>

# Doppelnippel konisch

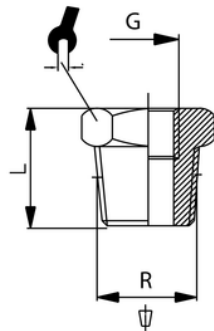
Double nipple, con.



ITV	R1	R2	L	↳
82002	R1/8	R1/8	17	13
82003	R1/4	R1/4	25	15
82004	R3/8	R3/8	30	19
82005	R1/2	R1/2	34	23
82006	R3/4	R3/4	36	30
82007	R1	R1	43	36
82008	R1 1/4	R1 1/4	48	45
82009	R1 1/2	R1 1/2	48	50
82010	R2	R2	56	62
<b>Reduziert / reduced</b>				
82202	R1/4	R1/8	31	16
82203	R3/8	R1/4	34	20
82204	R1/2	R1/4	36	23
82205	R1/2	R3/8	36	23
82206	R3/4	R1/4	41	28
82207	R3/4	R3/8	41	28
82208	R3/4	R1/2	41	28
82210	R1	R3/8	42	36
82211	R1	R1/2	42	36
82212	R1	R3/4	42	36
82214	R1 1/2	R1/2	53	46
82215	R1 1/4	R3/4	53	46
82216	R1 1/4	R1	53	46
82218	R1 1/2	R1/2	53	51
82219	R1 1/2	R3/4	53	51
82220	R1 1/2	R1	53	51
82221	R1 1/2	R1 1/4	53	51
82222	R2	R1/2	64	53
82223	R2	R3/4	64	53
82224	R2	R1	64	53
82225	R2	R1 1/4	64	53
82226	R2	R1 1/2	64	53
82228	R2 1/2	R1 1/2	64	53
82229	R2 1/2	R2	64	53

## Reduzierung

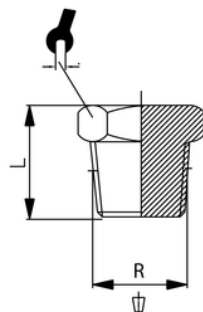
Reducer



ITV	R	G	L	t
82801	R1/4	G1/8	17	17
82802	R3/8	G1/4	16,5	18
82803	R1/2	G1/4	19,7	22
82804	R1/2	G3/8	21	26
82805	R3/4	G1/4	24	30
82806	R3/4	G3/8	24	30
82807	R3/4	G1/2	24	30
82808	R1	G1/4	27,5	38
82809	R1	G3/8	27,5	38
82810	R1	G1/2	24	35
82811	R1	G3/4	27,5	38
82812	R1 1/4	G3/8	30	46
82813	R1 1/4	G1/2	30	46
82814	R1 1/4	G3/4	30	46
82815	R1 1/4	G1	30	46
82816	R1 1/2	G3/8	30,5	52
82817	R1 1/2	G1/2	30,5	52
82818	R1 1/2	G3/4	30,5	52
82819	R1 1/2	G1	30,5	52
82820	R1 1/2	G1 1/4	30,5	52
82821	R2	G1/2	33,5	64
82822	R2	G3/4	33,5	64
82823	R2	G1	33,5	64
82824	R2	G1 1/4	33,5	64

## Stopfen

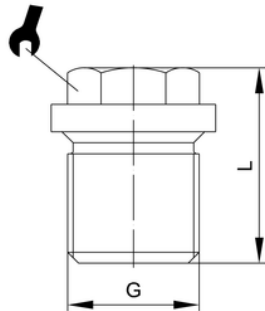
Stopfen  
Plug



ITV	R	L	t
83252	R1/8	15	12
83253	R1/4	18	14
83254	R3/8	19	17
83255	R1/2	22	22
83256	R3/4	25	27
83257	R1	28	36
83258	R1 1/4	30	46
83259	R1 1/2	30	50
83260	R2	35	65

## Verschluss-Stopfen

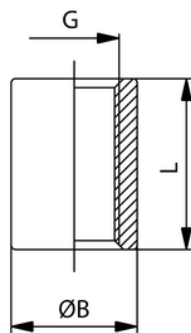
Male plug cyl.



ITV	G	L	t
83222	G1/8	17	10
83223	G1/4	17	13
83224	G3/8	17	17
83225	G1/2	22	19
83226	G3/4	26	24
83227	G1	32	27
83228	G1 1/4	33	30
83229	G1 1/2	33	34
83230	G2	40	36

## Muffe rund

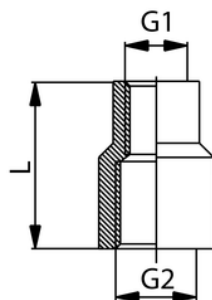
Sleeve



ITV	G	ØB	L
83002	G1/8	14	17
83003	G1/4	17,5	25
83004	G3/8	21,3	26
83005	G1/2	26,4	34
83006	G3/4	32	37
83007	G1	39,5	43
83008	G1 1/4	48,3	48
83009	G1 1/2	54,5	48
83010	G2	66,3	56

## Reduzierung

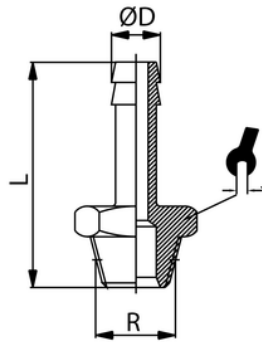
Reducer



ITV	G1	G2	L
83102	G1/8	G1/4	29
83103	G1/4	G3/8	29
83104	G1/4	G1/2	29
83105	G3/8	G1/2	29
83107	G3/8	G3/4	34
83108	G1/2	G3/4	34
83109	G1/4	G1	42
83110	G3/8	G1	42
83111	G1/2	G1	42
83112	G3/4	G1	42
83113	G3/8	G1 1/4	48
83114	G1/2	G1 1/4	48
83115	G3/4	G1 1/4	48
83116	G1	G1 1/4	48
83118	G1/2	G1 1/2	54
83119	G3/4	G1 1/2	54
83120	G1	G1 1/2	54
83121	G1 1/4	G1 1/2	54

## Schlauchtülle konisch

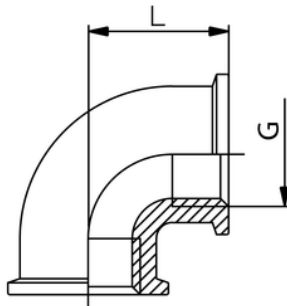
Male hose adaptor



ITV	R	ØD	L	t
83403	R1/8	7	33	11
83402	R1/4	7	46	15
83404	R1/4	9	46	15
83405	R3/8	9	43	19
83406	R1/2	15	63	23
83407	R3/4	20	65	29
83408	R1	25	69	37
83409	R1 1/4	35	73	45
83410	R1 1/2	40	86	51
83411	R2	54	94	63

## Winkel 90° I-I

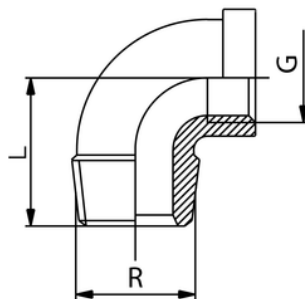
Elbow 90° F-F



ITV	G	L
85102	G1/8	18
85103	G1/4	21
85104	G3/8	25
85105	G1/2	28
85106	G3/4	33
85107	G1	38
85108	G1 1/4	45
85109	G1 1/2	50
85110	G2	58

## Winkel 90° I-A

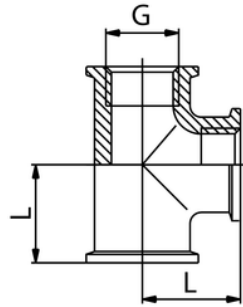
Elbow 90° F-M



ITV	G	R	L
85202	G1/8	R1/8	19
85203	G1/4	R1/4	21,5
85204	G3/8	R3/8	30
85205	G1/2	R1/2	29
85206	G3/4	R3/4	33,5
85207	G1	R1	38
85208	G1 1/4	R1 1/4	43
85209	G1 1/2	R1 1/2	47
85210	G2	R2	57,5

## T-Stück IG

Female T



<i>ITV</i>	<i>G</i>	<i>L</i>
84003	G1/4	21
84004	G3/8	22
84005	G1/2	28
84006	G3/4	33
84007	G1	38
84008	G1 1/4	45
84009	G1 1/2	50
84010	G2	58