

Standard executions		
Version	Code	Item
Locking band for cylinder ISO 6432 Ø 8 mm	072901	AFM8
Locking band for cylinder ISO 6432 Ø 10 mm	072902	AFM10
Locking band for cylinder ISO 6432 Ø 12 mm	072903	AFM12
Locking band for cylinder ISO 6432 Ø 16 mm	072904	AFM16
Locking band for cylinder ISO 6432 Ø 20 mm	072905	AFM20
Locking band for cylinder ISO 6432 Ø 25 mm	072906	AFM25
Locking band for round cylinders 10 ÷ 63 mm	072907	AFR1063
Bracket for AMB cylinders Ø 32 and 40 mm	072908	AS101
Bracket for AMB cylinders Ø 50 and 63 mm	072909	AS102
Bracket for AMB cylinders Ø 80 and 100 mm	072910	AS103
Bracket for AMB cylinders Ø 125 mm	072911	AS104
Bracket for tie rod cylinders Ø 32 e 40 mm	072912	AS105
Bracket for tie rod cylinders Ø 50 e 100 mm	072913	AS106
Bracket for tie rod cylinders Ø 125 mm	072909	AS102
Bracket for cylinders Ø 160 e 200 mm	072910	AS103
Bracket for tie rod cylinders Ø 250 and 320 mm	072917	AS110
Bracket for short stroke cylinders	072915	AS108
Bracket for rodless cylinders	072916	AS109

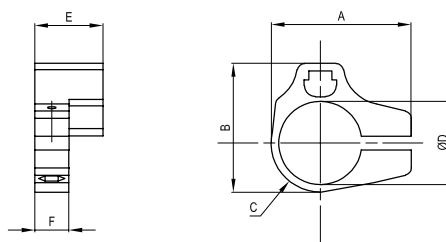


Series of brackets used to fix the different types of magnetic reed switches for the different types of existing cylinders. For the coupling / item table see page 1.120.5

Locking bands for cylinders ISO 6432

Material: Polyamide Mounting screw included in the Kit

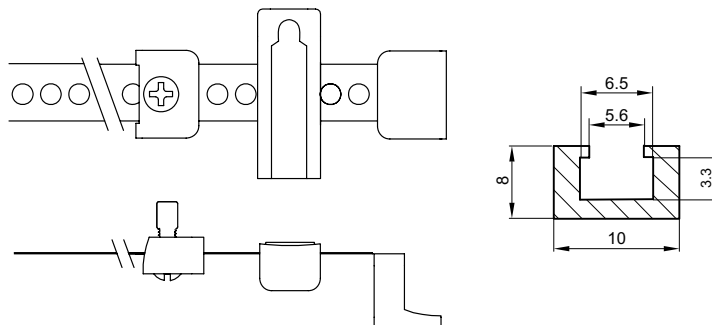
Code	Item	A	B	C	Ø D	E	F
072901	AFM8	21,4	18,9	6,45	9,3	18	9
072902	AFM10	23,4	20,9	7,45	11,3	18	9
072903	AFM12	25,4	22,9	8,45	13,3	18	9
072904	AFM16	29,4	26,9	10,45	17,3	18	9
072905	AFM20	33,4	30,9	12,45	21,3	18	9
072906	AFM25	38,4	35,9	14,95	26,3	18	9



Locking bands for round cylinders Ø 10-63

Metal bracket, screw and adaptor included in the Kit

Code	Item
072907	AFR1063

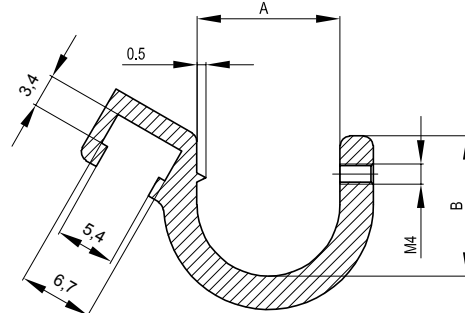


Brackets for cylinders ISO 1552

Material: Aluminium

Mounting screw included in the Kit

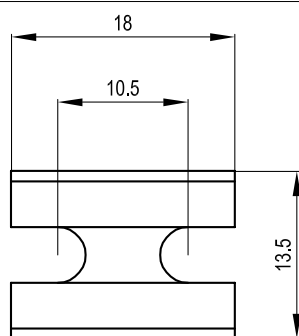
Code	Item	A	B
072908	AS101	11,5	11
072909	AS102	14,5	14
072910	AS103	16,5	20
072911	AS104	17,5	24
072912	AS105	7	8
072913	AS106	10	14
072917	AS110	24,5	21



Brackets for short stroke cylinders

Material: Polyamide

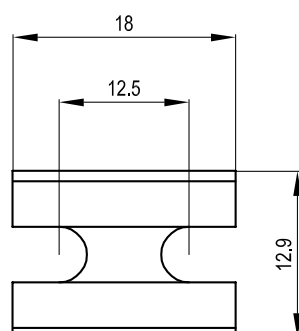
Code	Item
072915	AS108



Brackets for rodless cylinders

Material: Polyamide

Code	Item
072916	AS109



Item	STANDARD switches		ATEX switches	
	ASV	ASC	MK500A	MK502A
MSM MDM-MDMA	■	○	■	■
AMA	▲	▲	▲	▲
AMT	■	○	■	■
REDM	■	○	■	■
CM	■	○	■	■
CIS-CI-CIN	▲	○	▲	▲
CS-CD-CDN	▲	○	▲	▲
DUM - DUMN	○	▲	○	○
BISM - BMISM BIM - BMIM	○	▲	○	○
BSM BDM - BDMN	■	○	■	■
GEDB - GEDS	○	▲	○	○
GPB - GPS	○	▲	○	○
GSB - GSS	○	▲	○	○
S1-S2-S S4-S5-S6	■	▲	■	■
CRTH - CRTHD CRTF	■	○	■	■
ARTMC - ARTMFC ARTMLC - ARTMFLC	○	▲	○	○
ARC - ARP	○	▲	○	○
PAB - PAC - PPB PPC - PPD - PPE	○	▲	○	○
MDMX - MDMAX	■	○	■	■
AMX	■	○	■	■
CIXS - CIX - CIXN	■	○	■	■

▲ Direct mounting ■ Mounting with bracket ○ Not applicable