

# VERSCHRAUBUNGEN AUS EDELSTAHL

## STAINLESS STEEL CONNECTIONS

### FEATURES

- reine Edelstahlverschraubung
- für anspruchsvolle Einsatzzwecke
- *Pure stainless steel fitting*
- *For challenging applications*



**TECHNISCHE DATEN**

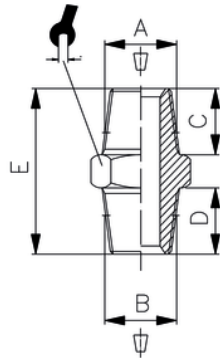
Betriebstemperatur	-20°C bis +150°C
Betriebsdruck	bis 150 bar
Werkstoffe	Verschraubungen aus Edelstahl 1.4404 (AISI 316L) Dichtungen aus FKM
Gewinde	DIN 3852 DIN 3858
Einsatzbereich	Pneumatik, Nahrungsmittelindustrie, chem. u. pharm. Industrie

**TECHNICAL DATA**

<i>Operating temperature</i>	<i>-20°C to +150°C</i>
<i>Operating pressure</i>	<i>Up to 150 bar</i>
<i>Materials</i>	<i>Fittings made of stainless steel 1.4404 (AISI 316L)</i> <i>Seals made of FKM</i>
<i>Thread</i>	<i>DIN 3852</i> <i>DIN 3858</i>
<i>Application</i>	<i>Pneumatics, food industry, chemical and pharmaceutical industry</i>

## Doppelnippel, konisch

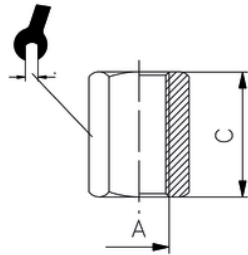
Nipple, conical



ITV	A	B	C	D	E	↳
20002-ES	R1/8	R1/8	7,5	7,5	20	12
20202-ES	R1/8	R1/4	7,5	11	23,5	14
20003-ES	R1/4	R1/4	11	11	27	14
20205-ES	R1/4	R3/8	11	11,5	27,5	17
20004-ES	R3/8	R3/8	11,5	11,5	28	17
20207-ES	R3/8	R1/2	11,5	14	31,5	22
20005-ES	R1/2	R1/2	14	14	34	22

## Muffe

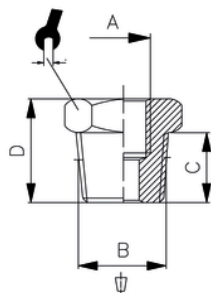
Sleeve



ITV	A	C	↳
30002-ES	G1/8	15	14
30003-ES	G1/4	22	17
30004-ES	G3/8	24	22
30005-ES	G1/2	30	27

## Reduzierung, konisch

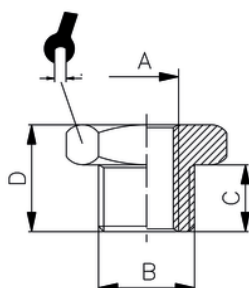
Reducer, conical



ITV	A	B	C	D	↳
20801-ES	G1/8	R1/4	11	16	14
20802-ES	G1/8	R3/8	11,5	16,5	17
20804-ES	G1/4	R3/8	11,5	16,5	17
20805-ES	G1/4	R1/2	14	19,5	22
20806-ES	G3/8	R1/2	14	19,5	22

## Reduzierung, zylindrisch

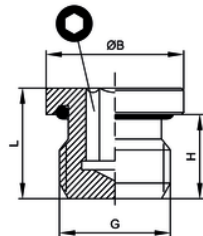
Reducer, cylindrical



ITV	A	B	C	D	↳
20902-ES	M5	G1/8	6	10,5	14
20903-ES	G1/8	G1/4	8	13	17
20905-ES	G1/4	G3/8	9	14	19

## Stopfen mit O-Ring

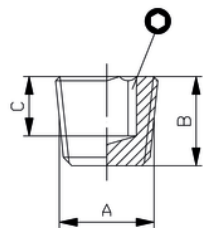
Male plug with o-ring



ITV	G	H	ØB	L	Ø
30152-ES	G1/8	6	14	9,2	5
30153-ES	G1/4	8	17	11,5	6
30154-ES	G3/8	9	20	12,5	8
30155-ES	G1/2	8	25	13	10

## Verschluss-Stopfen, konisch

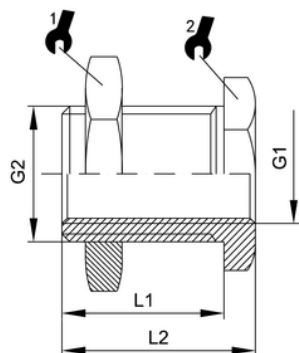
Plug, conical



ITV	A	B	C	Ø
401742-ES	R1/8	7,5	6	5
401743-ES	R1/4	11	8	6
401744-ES	R3/8	11,5	8	10
401745-ES	R1/2	14	9,5	10

## Schottverschraubung

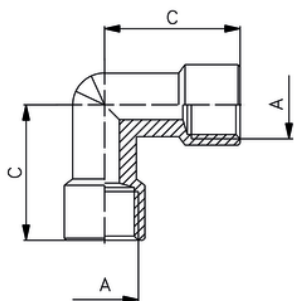
Schottverschraubung  
Bulkhead union



ITV	G1	G2	L1	L2	Ø	Ø
30602-ES	G1/8	M16x1,5	14	18	22	19
30603-ES	G1/4	M20x1,5	21	25	27	24
30604-ES	G3/8	M26x1,5	21	26	32	30
30605-ES	G1/2	M28x1,5	27	33	36	32

## Winkelstück IG-IG

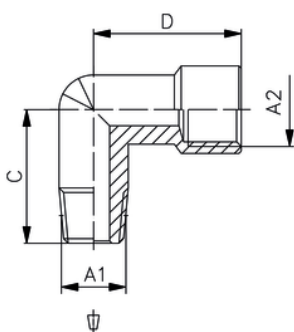
Female elbow



ITV	A	C
50102-ES	G1/8	19
50103-ES	G1/4	23
50104-ES	G3/8	25,5
50105-ES	G1/2	32

## Winkelstück IG-AG, konisch

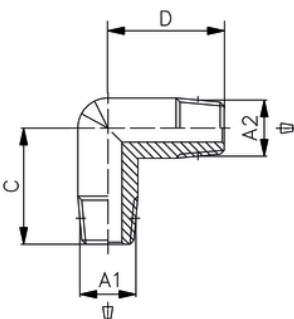
Male-female elbow, conical



ITV	A1	A2	C	D
50202-ES	R1/8	G1/8	18	18
50203-ES	R1/4	G1/4	25	23
50204-ES	R3/8	G3/8	24	25,5
50205-ES	R1/2	G1/2	30	32

## Winkelstück AG-AG, konisch

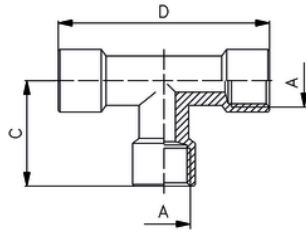
Winkelstück AG-AG, konisch  
Male elbow, conical



ITV	A1	A2	C	D
50002-ES	R1/8	R1/8	17	17
50003-ES	R1/4	R1/4	21	21
50004-ES	R3/8	R3/8	24	24
50005-ES	R1/2	R1/2	30	30

**T-Stück, 3x IG**

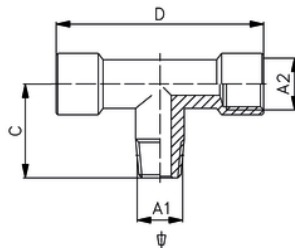
T-Stück, 3x IG  
Female T



ITV	A	C	D
40003-ES	G1/8	19	38
40004-ES	G1/4	23	46
40005-ES	G3/8	25,5	51
40006-ES	G1/2	32	64

**T-Stück**

2x IG, 1x AG konisch  
Centre male T, conical



ITV	A1	A2	C	D
40402-ES	R1/8	G1/8	18	38
40403-ES	R1/4	G1/4	25,5	46
40404-ES	R3/8	G3/8	24	51
40405-ES	R1/2	G1/2	30	64