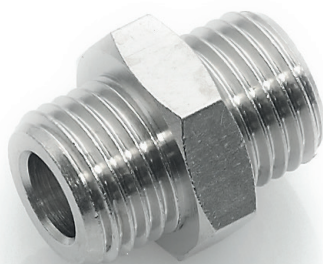


STANDARDVERSCHRAUBUNGEN TYP 100

STANDARD FITTINGS TYPE 100

FEATURES

- Verschraubungen aus Messing
- für Anschlussmöglichkeiten von M5 bis G1"
- hohe Belastbarkeit
- Korrosionsschutz durch Vernickelung
- *Brass fittings*
- *For connections from M5 to G1"*
- *High resilience*
- *Nickel-plating for corrosion protection*



TECHNISCHE DATEN

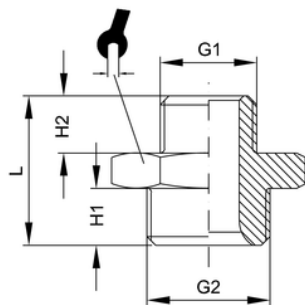
Betriebstemperatur	max. +150°C	abhängig von Temperaturbereich des eingesetzten Schlauches/Rohres
Betriebsdruck	bis 60 bar	abhängig vom Druckbereich des eingesetzten Schlauches/ Rohres und der verwendeten Temperatur
Werkstoffe	Messing vernickelt bzw. blank	CW614N und CW617N
Gewinde	zyl. Gew. DIN EN ISO 228 kon. Gew. DIN EN 10226 (ISO7 / DIN 2999) metr. Gew. DIN ISO 262	
Medium	pneumatische, ölhydraulische und hydraulische Kreisläufe	

TECHNICAL DATA

<i>Operating temperature</i>	<i>Max +150°C</i>	<i>Dependent on the temperature range of the tube/pipe used</i>
<i>Operating pressure</i>	<i>Up to 60 bar</i>	<i>Dependent on the pressure range of the tube/pipe used and the temperature used</i>
<i>Materials</i>	<i>Brass, nickel-plated or polished</i>	<i>CW614N and CW617N</i>
<i>Thread</i>	<i>Cyl. thread, DIN EN ISO 228 Con. thread, DIN EN 10226 (ISO7 / DIN Medium 2999) Metr. thread, DIN ISO 262</i>	
<i>Medium</i>	<i>Pneumatic, oil-hydraulic and hydraulic circuits</i>	

101

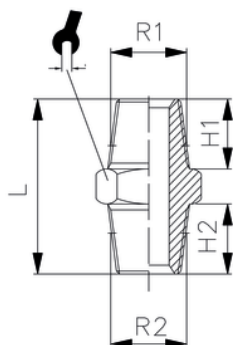
Doppelnippel zylindrisch
Double nipple



ITV	G1	G2	H1	H2	L	⌀
20101	M5	M5	4	4	11,5	8
20302	M5	G1/8	6	4	14,5	14
20102	G1/8	G1/8	6	6	16,5	14
20303	G1/8	G1/4	8	6	19	17
20304	G1/8	G3/8	9	6	20	19
20103	G1/4	G1/4	8	8	21	17
20305	G1/4	G3/8	9	8	22	19
20306	G1/4	G1/2	10	8	23,5	24
20104	G3/8	G3/8	9	9	23	19
20307	G3/8	G1/2	10	9	24,5	24
20105	G1/2	G1/2	10	10	25,5	24
20308	G1/2	G3/4	11	10	27,5	30
20106	G3/4	G3/4	11	11	28,5	30
20309	G3/4	G1	11	12	30	36
20107	G1	G1	14	14	35	36

102

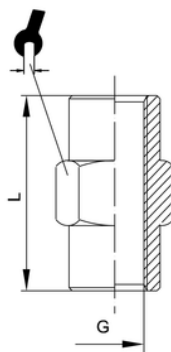
Doppelnippel konisch
Double nipple con.



ITV	R1	R2	H1	H2	L	⌀
20002	R1/8	R1/8	8	8	20,5	12
20202	R1/8	R1/4	11	8	24	14
20203	R1/8	R3/8	11,5	8	24,5	17
20204	R1/8	R1/2	7,5	14	27	22
20003	R1/4	R1/4	11	11	27	14
20205	R1/4	R3/8	11,5	11	27,5	17
20206	R1/4	R1/2	14	11	30,5	22
20004	R3/8	R3/8	11,5	11,5	28	17
20207	R3/8	R1/2	14	11,5	31	22
20005	R1/2	R1/2	14	14	33,5	22
20208	R1/2	R3/4	16	14	37	27
20006	R3/4	R3/4	16	16	39,5	27
20209	R3/4	R1	19	16,5	42,5	34
20007	R1	R1	19	19	45,5	34

103

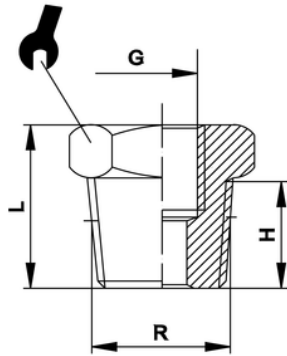
Muffe
Sleeve



ITV	G	L	⌀
30001	M5	11	8
30002	G1/8	15	14
30003	G1/4	22	17
30004	G3/8	23	22
30005	G1/2	28	26
30006	G3/4	32	32
30007	G1	35	38

104

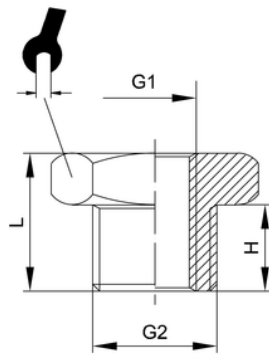
Reduzierung konisch
Reducer conical



ITV	R	G	H	L	⌀
20801	R1/4	G1/8	11	16	14
20802	R3/8	G1/8	11,5	16,5	17
20804	R3/8	G1/4	11,5	16,5	17
20803	R1/2	G1/8	14	19,5	22
20805	R1/2	G1/4	14	19,5	22
20806	R1/2	G3/8	14	19,5	22
20810	R3/4	G3/8	16,5	23,5	27
20807	R3/4	G1/2	16,5	23	27
20808	R1	G1/2	19	27,5	34
20809	R1	G3/4	18,5	27,5	34

104 z

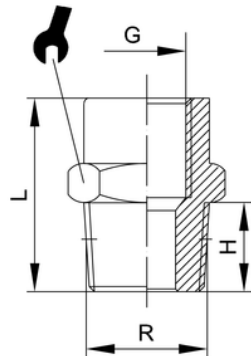
Reduzierung zylindrisch
Reducer cylindrical



ITV	G1	G2	H	L	⌀
20902	M5	G1/8	6	10,5	14
20903	G1/8	G1/4	9	13	17
20904	G1/8	G3/8	9	14	19
20905	G1/4	G3/8	9	14	19
20906	G1/8	G1/2	10	15,5	24
20907	G1/4	G1/2	10	15,5	24
20908	G3/8	G1/2	10	15,5	24
20909	G3/8	G3/4	11	17,5	30
20910	G1/2	G3/4	11	17,5	30
20911	G1/2	G1	11,5	18,5	36
20912	G3/4	G1	11,5	18,5	36

105

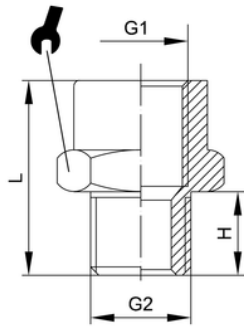
Verlängerung konisch
Extension con.



ITV	R	G	H	L	⌀
20402	R1/8	G1/8	8	18	14
20403	R1/8	G1/4	8	21,5	17
20404	R1/8	G3/8	8	22,5	22
20405	R1/4	G1/4	11	24,5	17
20406	R1/4	G3/8	11	25,5	22
20407	R1/4	G1/2	11	29	24
20408	R3/8	G3/8	11,5	26	22
20409	R3/8	G1/2	11,5	29	24
20410	R1/2	G1/2	14	32	26
20411	R1/2	G3/4	14	35	32
20413	R1/2	G1	14	37,5	38
20412	R3/4	G3/4	13	30	32

105 z

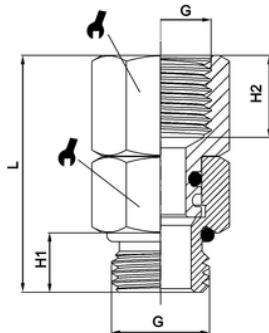
Verlängerung zylindrisch
Parallel M/F extension



ITV	G1	G2	H	L	α
20501	G1/8	M5	4	14,5	14
20502	G1/8	G1/8	6	16	14
20503	G1/4	G1/8	6	19,5	17
20504	G3/8	G1/8	6	20,5	22
20505	G1/4	G1/4	8	21,5	17
20506	G3/8	G1/4	8	22,5	22
20507	G1/2	G1/4	8	26	24
20508	G3/8	G3/8	9	23,5	22
20509	G1/2	G3/8	9	27	24
20510	G1/2	G1/2	10	28	26
20511	G3/4	G1/2	11	28	32
20513	G1	G3/4	11	29	38

105 dz

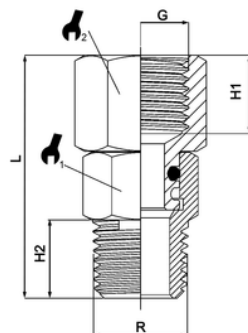
Verlängerung drehbar zylindrisch
Swivel extension Parallel M/F



ITV	G	H1	H2	L	α
201152	G1/8	6,5	8	27	13
201153	G1/4	8	11	32	16
201154	G3/8	9	11,5	33,5	19

105 dk

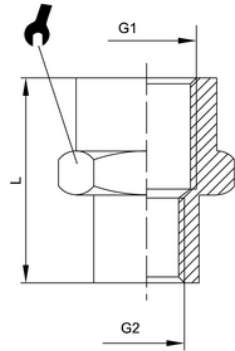
Verlängerung drehbar konisch
Swivel extension conical M/F



ITV	R	G	H1	H2	L	α	α
201162	R1/8	G1/8	8	8	28	12	13
201163	R1/4	G1/4	11	11	34	14	16
201164	R3/8	G3/8	11,5	11,5	35,5	17	19

106

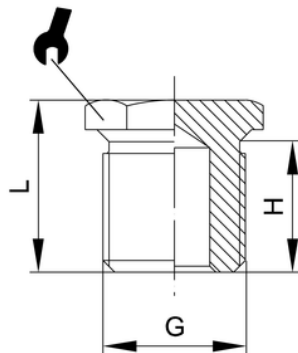
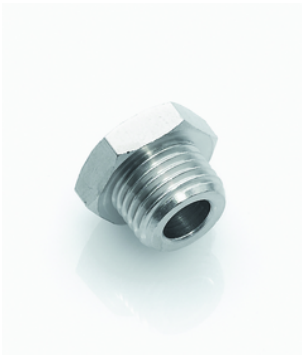
Verlängerung reduziert IG-IG
Reducing sleeve



ITV	G1	G2	L	⊘
30101	G1/8	M5	13,5	14
30102	G1/4	G1/8	19	17
30103	G3/8	G1/8	20	22
30104	G1/2	G1/8	24	24
30105	G3/8	G1/4	22,5	22
30106	G1/2	G1/4	26	24
30107	G1/2	G3/8	26	24
30108	G1	G1/2	39	40
30109	G1	G3/4	41	40
30110	G1/2	G3/4	30	32

107

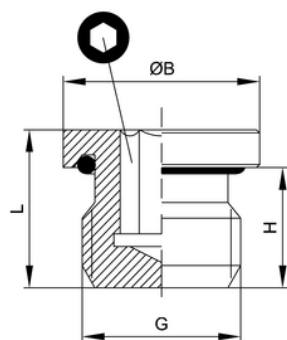
Stopfen
Parallel male plug



ITV	G	H	L	⊘
30201	M5	4	7	8
30202	G1/8	6	10	14
30203	G1/4	8	12,5	17
30204	G3/8	9	13,5	19
30205	G1/2	10	15,5	24
30206	G3/4	11	16,5	30
30207	G1	13	19	38

107 OR

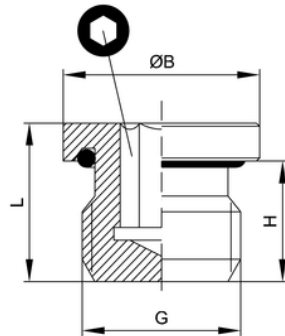
Stopfen mit O-Ring
Parallel male plug with o-ring



ITV	G	ØB	H	L	O
30150	M5	8	4,5	7,5	2,5
30151	M7	11	6	9	4
30152	G1/8	14	6	9,5	5
30153	G1/4	17	8	11,5	6
30154	G3/8	20	9	12,5	8
30155	G1/2	26	11	14	10

107 OR FKM

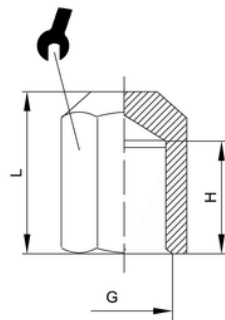
Stopfen mit O-Ring
Parallel male plug with O-Ring FKM



ITV	G	ØB	H	L	Ø
V30150	M5	8	4,5	7,5	2,5
V30151	M7	11	6	9	4
V30152	G1/8	14	6	9,5	5
V30153	G1/4	17	8	11,5	6
V30154	G3/8	20	9	12,5	8
V30155	G1/2	26	11	14	10

108

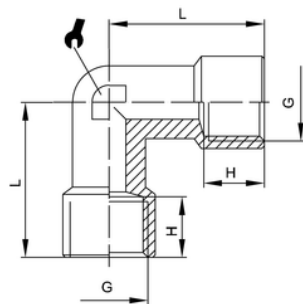
Kappe
Female plug



ITV	G	H	L	⊘
30302	G1/8	8	11,5	14
30303	G1/4	11	15	17
30304	G3/8	12	15,5	20
30305	G1/2	14	20	24

109

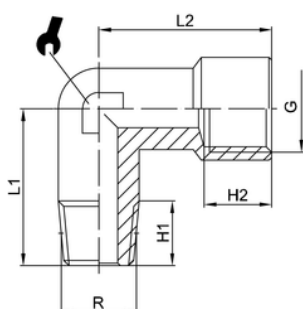
Winkelstück
Female elbow



ITV	G	H	L	⊘
50101	M5	5	11	9
50102	G1/8	8	21	10
50103	G1/4	11	25,5	13
50104	G3/8	11,5	28	17
50105	G1/2	14	33,5	21
50106	G3/4	16,5	36,5	25
50107	G1	19	45	30

110

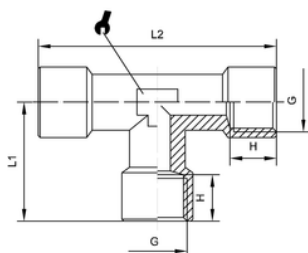
Winkelstück
Male elbow



ITV	R	G	H1	H2	L1	L2	⊘
50201	M5	M5	4	4	11,5	11	9
50208	R1/4	G1/8	11	8	21,5	21	10
50202	R1/8	G1/8	8	8	18,5	21	10
50203	R1/4	G1/4	11	11	23,5	25,5	13
50204	R3/8	G3/8	11,5	11,5	26	28	17
50205	R1/2	G1/2	14	14	31	33,5	21
50206	R3/4	G3/4	16	16,5	33	36,5	25
50207	R1	G1	17,5	19	39	45	30

111

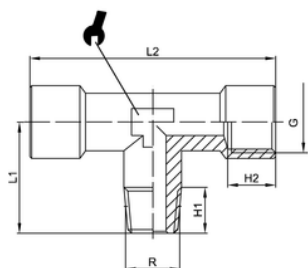
T-Stück
Female tee



ITV	G	H	L1	L2	⊘
40002	M5	5	11	22	9
40003	G1/8	8	21	42	10
40004	G1/4	11	25,5	51	13
40005	G3/8	11,5	28	56	17
40006	G1/2	15	33,5	67	21
40007	G3/4	16,5	36,5	73	25
40008	G1	19	45	90	30

112

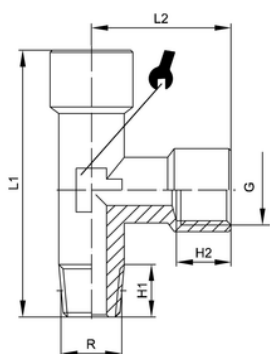
T-Stück konisch
Centre male tee, con.



ITV	R	G	H1	H2	L1	L2	⊘
40401	M5	M5	5	4	11,5	22	9
40402	R1/8	G1/8	8	8	18,5	42	10
40403	R1/4	G1/4	11	11	23,5	51	13
40404	R3/8	G3/8	11,5	11,5	26	56	17
40405	R1/2	G1/2	14	14	31	67	21
40406	R3/4	G3/4	16	16,5	33	73	25
40407	R1	G1	17,5	19	39	90	30

113

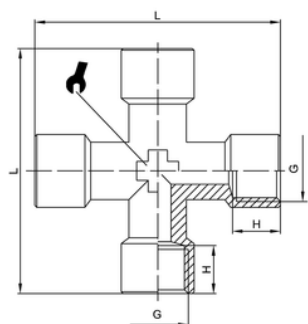
L-Stück konisch
Off-set male tee MFF, con.



ITV	R	G	H1	H2	L1	L2	⊘
40501	M5	M5	4	5	22,5	11	-
40502	R1/8	G1/8	8,5	8,5	39,5	21	10
40503	R1/4	G1/4	11	11	49	25,5	13
40504	R3/8	G3/8	11,5	11,5	54	28	17
40505	R1/2	G1/2	14	15	64	33	21
40506	R3/4	G3/4	16	16,5	69,5	36,5	25
40507	R1	G1	17,5	19	84	45	30

114

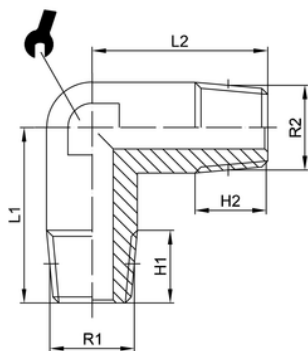
Kreuzstück
Female cross



ITV	G	H	L	⊘
60202	G1/8	8	42	10
60203	G1/4	11	51	13
60204	G3/8	11,5	56	17
60205	G1/2	14	67	21

115

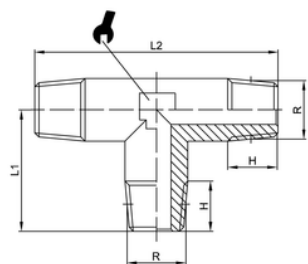
Winkelstück konisch
Male elbow, conical



ITV	R1	R2	H1	H2	L1	L2	↳
50001	M5	M5	4	4	11	11	9
50002	R1/8	R1/8	8	8	18,5	18,5	10
50008	R1/4	R1/8	11	8	21,5	19	10
50003	R1/4	R1/4	11	11	23,5	23,5	13
50004	R3/8	R3/8	11,5	11,5	26	26	17
50005	R1/2	R1/2	14	14	31	31	21
50006	R3/4	R3/4	16	16	33	33	25
50007	R1	R1	17	17	39	39	30

116

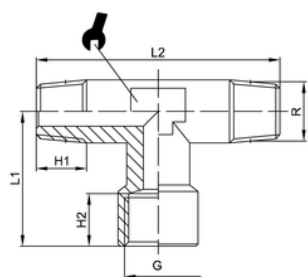
T-Stück konisch
Male tee con.



ITV	R	H	L1	L2	↳
40103	R1/8	8	18,5	37	10
40104	R1/4	11	23,5	47	13
40105	R3/8	11,5	26	52	17
40106	R1/2	14	31	62	21
40107	R3/4	16	33	66,4	25
40108	R1	17,5	39	78	30

117

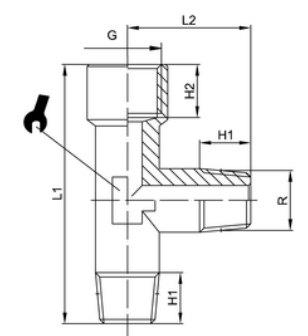
T-Stück konisch mit Außen-Innengewinde
Centre female tee con.



ITV	R	G	H1	H2	L1	L2	↳
40202	R1/8	G1/8	8	8	21	37	10
40203	R1/4	G1/4	11	11	25,5	47	13
40204	R3/8	G3/8	11,5	11,5	28	52	17
40205	R1/2	G1/2	14	15	33,5	62	21
40206	R3/4	G3/4	16	16,5	36,5	66,4	25
40207	R1	G1	17,5	19	45	78	30

118

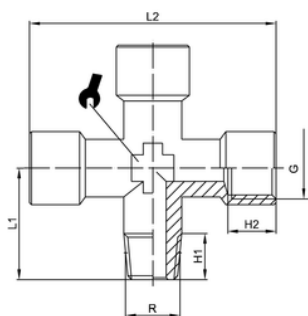
L-Stück konisch
Off-set female tee con.



ITV	R	G	H1	H2	L1	L2	↳
40302	R1/8	G1/8	8	8	39,5	18,5	10
40303	R1/4	G1/4	11	11	49	23,5	13
40304	R3/8	G3/8	11,5	11,5	54	26	17
40305	R1/2	G1/2	14	14	64,5	31	21
40306	R3/4	G3/4	16	16,5	69,5	33	25
40307	R1	G1	17,5	19	84	39	30

120

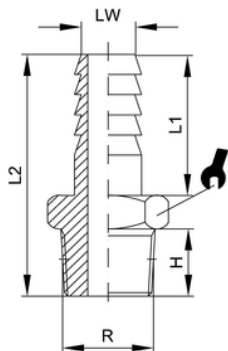
Kreuzstück konisch
1 male 3 female cross, con.



ITV	R	G	H1	H2	L1	L2	↳
60251	R1/8	G1/8	8	8	18,5	42	10
60252	R1/4	G1/4	11	11	23,5	51	13
60253	R3/8	G3/8	11,5	11,5	26	56	17
60254	R1/2	G1/2	14	14	31	67	21

119

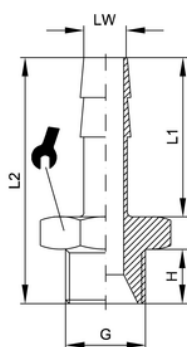
Schlauchtülle konisch
Male hose adapter con.



ITV	LW	R	H	L1	L2	↳
30402	6	R1/8	8	19	31,5	12
30403	6	R1/4	11	19	35	14
30404	7	R1/8	8	19	31,5	12
30405	7	R1/4	11	19	35	14
30406	8	R1/8	8	19	31,5	12
30407	8	R1/4	11	20	36	14
30408	9	R1/8	8	19	31,5	12
30409	9	R1/4	11	19	35	14
30410	9	R3/8	11,5	19	35,5	17
30411	9	R1/2	14	19	38,5	22
30412	10	R1/8	8	20	32,5	12
30413	10	R1/4	11	20	36	14
30414	10	R3/8	11,5	20	36,5	17
30415	10	R1/2	14	20	39,5	22
30416	12	R1/4	11	20	36	14
30417	12	R3/8	11,5	20	36,5	17
30418	12	R1/2	14	20	39,5	22
30419	14	R3/8	11,5	22	38,5	17
30421	14	R1/2	14	22	41,5	22
30420	16	R3/8	11,5	22	38,5	17
30422	16	R1/2	14	22	41,5	22
30423	16	R3/4	16,5	22	45	27
30424	17	R3/8	11,5	24	40,5	18
30426	17	R1/2	14	24	43,5	22
30428	18	R3/8	11,5	24	40,5	19
30427	18	R1/2	14	24	43,5	22
30425	18	R3/4	16,5	24	47	27
30429	20	R3/8	11,5	24	41	22
30430	20	R1/2	14	24	43,5	22
30431	20	R3/4	16,5	24	46,5	27
30432	25	R3/4	16,5	30	53	27
30433	25	R1	19	30	56	34

119 z

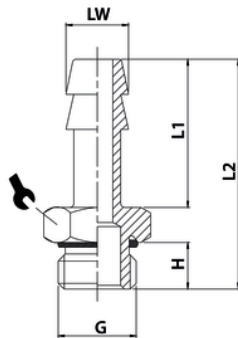
Schlauchtülle zylindrisch
Male hose adapter cyl.



<i>ITV</i>	<i>LW</i>	<i>G</i>	<i>H</i>	<i>L1</i>	<i>L2</i>	<i>r</i>
30450	4,5	M5	4	15	22,5	8
30452	6	G1/8	6	19	29,5	12
30453	6	G1/4	8	19	32	14
30454	7	G1/8	6	19	29,5	12
30455	7	G1/4	8	19	32	14
30456	8	G1/8	6	19	29,5	12
30465	8	G1/4	8	19	32	14
30466	8	G3/8	9	19	33	19
30460	9	G1/8	6	19	29,5	12
30459	9	G1/4	8	19	32	14
30462	9	G3/8	9	19	33	19
30468	10	G1/8	6	20	30,5	12
30469	10	G1/4	8	20	33	14
30470	10	G3/8	9	20	34	19
30461	12	G1/4	8	20	33	14
30457	12	G3/8	9	20	34	19
30458	12	G1/2	10	20	35,5	22
30471	14	G3/8	9	22	36	19
30472	14	G1/2	10	22	37,5	22
30473	17	G3/8	9	24	38	19
30474	17	G1/2	10	24	39,5	22
30475	18	G3/4	11	24	41,5	30
30476	20	G1/2	10	24	39,5	22
30477	20	G3/4	11	24	41,5	30

119 z OR

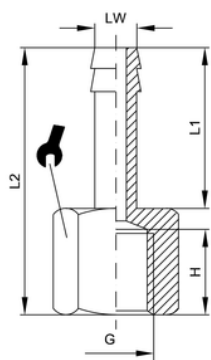
Schlauchtülle zylindrisch mit O-Ring
Male hose adapter cyl. with O-ring



ITV	LW	G	H	L1	L2	↳
30480	4	M5	4,5	15	23	8
30481	6	G1/8	6,5	19	30	14
30482	6	G1/4	8	19	32	17
30493	6	G3/8	9	19	33	20
30483	7	G1/8	6,5	19	30	14
30484	7	G1/4	8	19	32	17
30485	8	G1/8	6,5	19	30	14
30486	8	G1/4	8	19	32	17
30499	8	G3/8	9	19	33	20
30487	9	G1/8	6,5	19	30	14
30488	9	G1/4	8	19	32	17
30489	9	G3/8	9	19	33	20
30701	10	G1/8	6,5	19	30	14
30702	10	G1/4	8	19	32	17
30490	12	G1/4	8	20	33	17
30491	12	G3/8	9	20	34	20
30492	12	G1/2	10	20	35,5	24
30496	17	G3/8	9	24	38	20
30497	17	G1/2	10	24	39,5	24

122

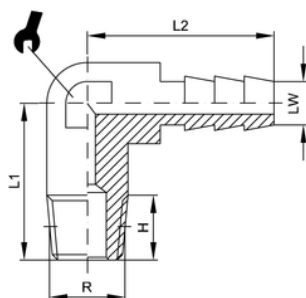
Schlauchtülle mit Innengewinde
Female hose adapter



ITV	LW	G	H	L1	L2	↳
30502	6	G1/8	8,5	19,5	30	14
30508	6	G1/4	11	19	31,5	15
30503	7	G1/8	8,5	19,5	30	14
30513	7	G1/4	11	19,5	32,5	17
30509	8	G1/8	8	19	28,5	12
30504	8	G1/4	11	19,5	32,5	17
30514	9	G1/8	8	19	28,5	12
30505	9	G1/4	11	19,5	32,5	17
30515	10	G1/8	8	20	29,5	12
30516	10	G1/4	11	20	32,5	15
30507	10	G3/8	11,5	19,5	33,5	20
30517	10	G1/2	14	20	36	24
30518	12	G1/4	11	20	32,5	15
30510	12	G3/8	11,5	19,5	33,5	20
30511	12	G1/2	14,5	19,5	37,5	24
30519	14	G3/8	11,5	22	35	19
30512	14	G1/2	14	22	38	24
30520	16	G3/8	11,5	22	35	19
30521	16	G1/2	14	22	38	24
30522	17	G3/8	11,5	24	37	19
30523	17	G1/2	14	24	40	24
30524	18	G1/2	14	24	40	24
30525	18	G3/4	15	24	41,5	29
30526	20	G3/4	15	24	41,5	29
30527	25	G3/4	15	30	47,5	29

121

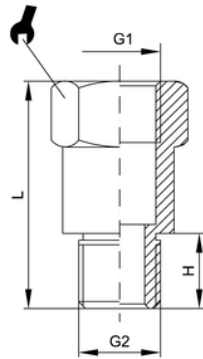
Winkeleinschraubversch. mit Schlauchaufnahme
Elbow connector for tubes



ITV	LW	R	H	L1	L2	↳
51000	6	R1/8	8	18,5	21,5	9
51002	6	R1/4	11	22	22,5	10
51003	8	R1/4	11	22	22,5	10
51001	9	R1/8	10,5	19,5	23,5	11
51004	9	R1/4	11	22	23,5	11

123

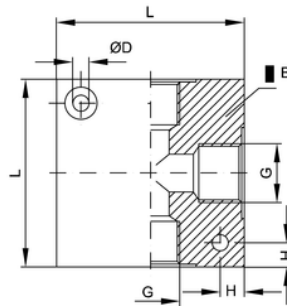
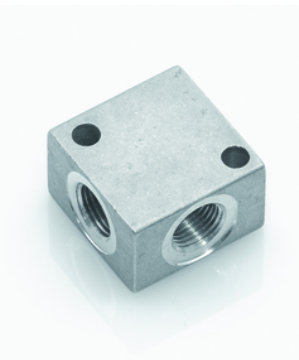
Verlängerung IG-AG zylindrisch
Extension cyl.



ITV	G1	G2	H	L	↳
20702	G1/8	G1/8	6	22	14
20703	G1/8	G1/8	6	42	14
20706	G1/8	G1/8	6	51	14
20704	G1/4	G1/4	8	35	17
20705	G1/4	G1/4	8	51	17

124

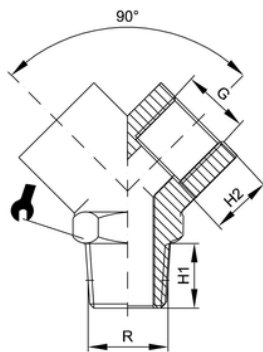
Verteilerblock aus Aluminium
Aluminium cross manifold



ITV	G	ØD	B	H	L
60402	G1/8	4,5	15	4	25
60403	G1/4	5,5	20	7	40
60404	G3/8	5,5	25	8	50
60405	G1/2	5,5	30	8	50

125

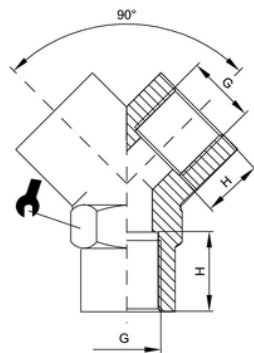
Y-Verteiler konisch
M/F Y-connector con.



ITV	R	G	H1	H2	↳
60002	R1/8	G1/8	8	8	13
60003	R1/4	G1/4	11	11	17
60004	R3/8	G3/8	11,5	11,5	20
60005	R1/2	G1/2	14	14	25

126

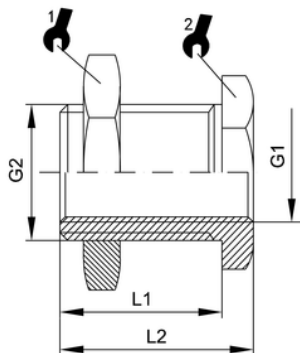
Y-Verteiler
Female Y-connector



ITV	G	H	↳
60102	G1/8	8	13
60103	G1/4	11	17
60104	G3/8	11,5	20
60105	G1/2	14	25

127

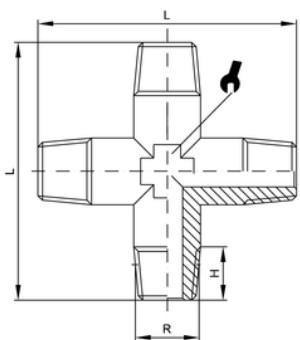
Schottverschraubung
Bulkhead union



ITV	G1	G2	L1	L2	⌀	⌀
30601-1	M5	M10x1	10,5	14	14	14
30602-1	G1/8	M16x1,5	14	18	22	19
30603-1	G1/4	M20x1,5	21	25	27	24
30604-1	G3/8	M26x1,5	21	26	32	30
30605-1	G1/2	M28x1,5	27	33	36	32

128

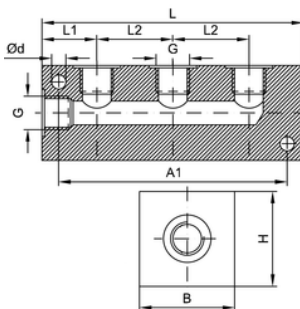
Kreuzstück konisch
Male cross



ITV	R	H	L	⌀
60302	R1/8	8	35	11
60303	R1/4	11	47	13
60304	R3/8	11,5	52	17
60305	R1/2	14	58	20

129

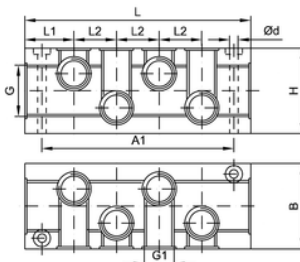
Verteilerleiste 3fach
3-connection block



ITV	G	H	B	L	L1	L2	A1	Ød
12900	M5	15	15	40	10	10	32	3,4
12901	G1/8	20	20	56	13,5	17	46	4,4
12902	G1/4	30	30	89	20	29	74	6,4
12903	G3/8	40	30	85	20	26	72	6,4
12904	G1/2	40	30	105	25	32	90	6,4

130

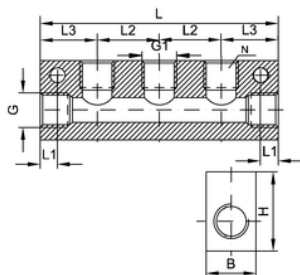
Durchgangsleiste 8fach
Through-going block



ITV	G	G1	B	H	L	L1	L2	A1	Ød
60311	G1/4	M5	32	25	65	17,5	10	50	4,4
60312	G3/8	G1/8	40	30	114	22,5	23	100	6,5
60313	G1/2	G1/4	50	35	144	28,5	29	128	6,5
60314	G3/4	G1/2	60	45	170	31	36	150	8,5

131

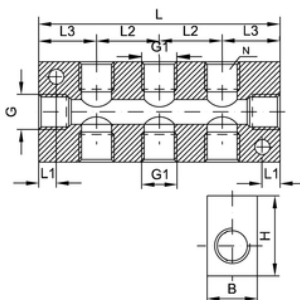
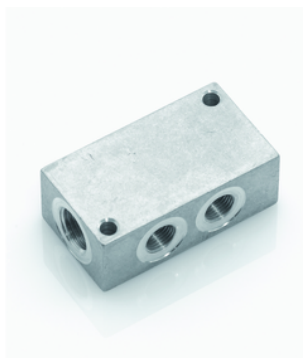
Durchgangsleiste
Through-going block



ITV	G	G1	B	H	L1	L2	L3	L	N
60411	G1/4	G1/8	20	30	4,5	18	18	54	2
60412	G1/4	G1/8	20	30	4,5	18	18	72	3
60413	G1/4	G1/8	20	30	4,5	18	18	90	4
60414	G1/4	G1/8	20	30	4,5	18	18	108	5
60415	G3/8	G1/4	25	40	8,5	24	22	68	2
60416	G3/8	G1/4	25	40	8,5	24	22	92	3
60417	G3/8	G1/4	25	40	8,5	24	22	116	4
60418	G3/8	G1/4	25	40	8,5	24	22	140	5

132

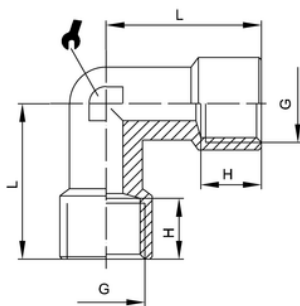
Durchgangsleiste
Through-going block



ITV	G	G1	B	H	L1	L2	L3	L	N
61411	G1/4	G1/8	20	30	4,5	18	18	54	2+2
61412	G1/4	G1/8	20	30	4,5	18	18	72	3+3
61413	G1/4	G1/8	20	30	4,5	18	18	90	4+4
61414	G1/4	G1/8	20	30	4,5	18	18	108	5+5
61415	G3/8	G1/4	25	40	8,5	24	22	68	2+2
61416	G3/8	G1/4	25	40	8,5	24	22	92	3+3
61417	G3/8	G1/4	25	40	8,5	24	22	116	4+4
61418	G3/8	G1/4	25	40	8,5	24	22	140	5+5

109 blank

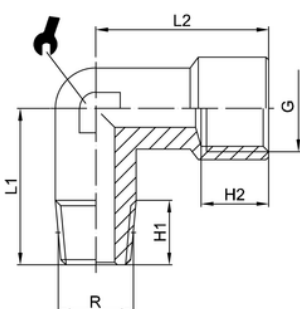
Winkelstück
Female elbow



ITV	G	H	L	α
R50102	G1/8	8	21	10
R50103	G1/4	11	25,5	13
R50104	G3/8	11,5	28	17
R50105	G1/2	14	33,5	21
R50106	G3/4	16,5	36,5	25
R50107	G1	19	45	30

110 blank

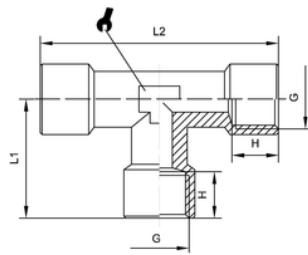
Winkelstück
Male-female elbow



ITV	R	G	H1	H2	L1	L2	α
R50202	R1/8	G1/8	8	8	18,5	21	10
R50203	R1/4	G1/4	11	11	23,5	25,5	13
R50204	R3/8	G3/8	11,5	11,5	26	28	17
R50205	R1/2	G1/2	14	14	31	33,5	21
R50206	R3/4	G3/4	16	16,5	33	36,5	25
R50207	R1	G1	17,5	19	39	45	30

111 blank

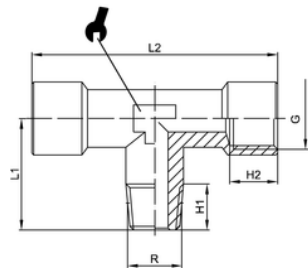
T-Stück
Female T



ITV	G	H	L1	L2	↳
R40003	G1/8	8	21	42	10
R40004	G1/4	11	25,5	51	13
R40005	G3/8	11,5	28	56	17
R40006	G1/2	15	33,5	67	21
R40007	G3/4	16,5	36,5	73	25
R40008	G1	19	45	90	30

112 blank

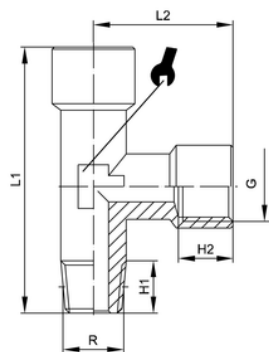
T-Stück konisch
Centre male tee, con.



ITV	R	G	H1	H2	L1	L2	↳
R40402	R1/8	G1/8	8	8	18,5	42	10
R40403	R1/4	G1/4	11	11	23,5	51	13
R40404	R3/8	G3/8	11,5	11,5	26	56	17
R40405	R1/2	G1/2	14	14	31	67	21
R40406	R3/4	G3/4	16	16,5	33	73	25
R40407	R1	G1	17,5	19	39	90	30

113 blank

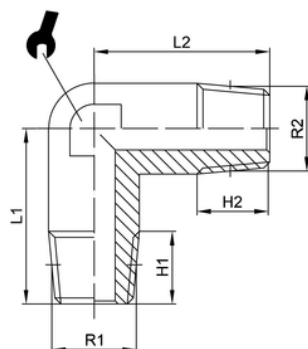
L-Stück konisch
Off-set male T-MFF, con.



ITV	R	G	H1	H2	L1	L2	↳
R40502	R1/8	G1/8	8	8	39,5	21	10
R40503	R1/4	G1/4	10	11,5	49	25,5	13
R40504	R3/8	G3/8	11,5	11,5	54	28	17
R40505	R1/2	G1/2	14,5	14	64,5	33	21
R40506	R3/4	G3/4	16	15,5	69,5	36,5	25
R40507	R1	G1	17,5	16,5	87	45	30

115 blank

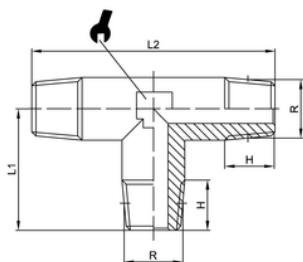
Winkelstück konisch
Male elbow, conical



ITV	R1	R2	H1	H2	L1	L2	↳
R50002	R1/8	R1/8	8	8	18,5	18,5	10
R50003	R1/4	R1/4	11	11	23,5	23,5	13
R50004	R3/8	R3/8	11,5	11,5	26	26	17
R50005	R1/2	R1/2	14	14	31	31	21
R50006	R3/4	R3/4	16	16	33	33	25
R50007	R1	R1	17	17	39	39	30

116 blank

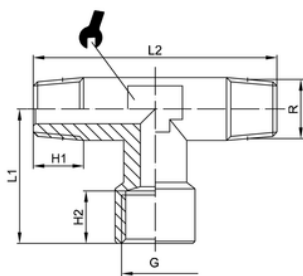
T-Stück konisch
Male tee, con.



ITV	R	H	L1	L2	↳
R40104	R1/4	11	23,5	47	13
R40105	R3/8	11,5	26	52	17
R40106	R1/2	14	31	62	21
R40107	R3/4	16	33	66,4	25
R40108	R1	17,5	39	78	30

117 blank

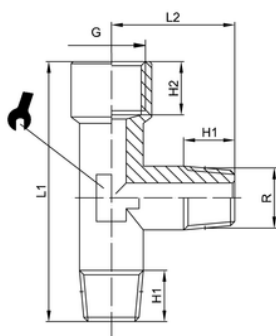
T-Stück konisch mit Außengewinde
Centre female tee con.



ITV	R	G	H1	H2	L1	L2	↳
R40202	R1/8	G1/8	8	8	21	37	10
R40203	R1/4	G1/4	11	11	25,5	47	13
R40204	R3/8	G3/8	11,5	11,5	28	52	17
R40205	R1/2	G1/2	14	14	33,5	62	21
R40206	R3/4	G3/4	16	16,5	36,5	66,4	25
R40207	R1	G1	17,5	19	45	78	30

118 blank

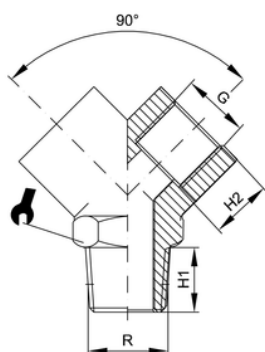
L-Stück konisch
Off-set female tee con.



ITV	R	G	H1	H2	L1	L2	↳
R40302	R1/8	G1/8	8	8	39,5	18,5	10
R40303	R1/4	G1/4	11	11	49	23,5	13
R40304	R3/8	G3/8	11,5	11,5	54	26	17
R40305	R1/2	G1/2	14	14	65,5	31	21
R40306	R3/4	G3/4	16	16,5	69,5	33	25
R40307	R1	G1	17,5	19	84	39	30

125 blank

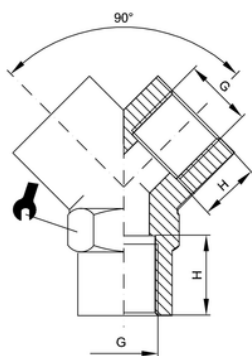
Y-Verteiler
Female Y-connector



ITV	R	G	H1	H2	↳
R60002	R1/8	G1/8	8	8	13
R60003	R1/4	G1/4	11	11	17
R60004	R3/8	G3/8	11,5	11,5	20
R60005	R1/2	G1/2	14	14	25

126 blank

Y-Verteiler
Female Y-connector



<i>ITV</i>	<i>G</i>	<i>H</i>	λ
R60102	G1/8	8	13
R60103	G1/4	11	17
R60104	G3/8	11,5	20
R60105	G1/2	14	25