

SCHNEIDRINGVERSCHRAUBUNGEN TYP 200

COMPRESSION FITTINGS TYPE 200

FEATURES

- Messingverschraubungen
- hohe Druckbelastbarkeit durch Schneidring und Mutter
- Schneidringe nach DIN 3861
- Überwurfmutter nach DIN 3870
- Korrosionsschutz durch Vernickelung
- für Rohrdurchmesser von 4 bis 18 mm
- Anschlussgrößen von 1/8" bis 1/2"
- Brass fittings
- High resilience due to cutting ring and nut
- Cutting rings in line with DIN 3861
- Swivel nuts in line with DIN 3870
- Nickel-plating for corrosion protection
- For pipe diameters from 4 mm to 18 mm
- Connection sizes from 1/8" to 1/2"





COMPRESSION FITTINGS TYPE 200

TECHNISCHE DATEN

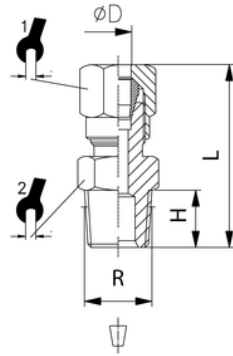
Betriebstemperatur	max. +150°C	abhängig von Temperaturbereich des eingesetzten Schlauches/Rohres
Betriebsdruck	bis 60 bar	abhängig vom Druckbereich des eingesetzten Schlauches/ Rohres und der verwendeten Temperatur
Werkstoffe	Körper und Überwurfmutter Messing vernickelt Schneidring Messing blank	CW614N und CW617N CW614N
Gewinde	zyl. Gew. DIN EN ISO 228 kon. Gew. DIN EN 10226 (ISO7 / DIN 2999)	
Medium	pneumatische, ölhydraulische und hydraulische Kreisläufe	
Schläuche/Rohre	geeignet für Metallrohre (Kupfer, Messing, Stahl, etc.) und für Kunststoffrohre mit Innenverstärkung	

TECHNICAL DATA

<i>Operating temperature</i>	<i>Max +150°C</i>	<i>Dependent on the temperature range of the tube/pipe used</i>
<i>Operating pressure</i>	<i>Up to 60 bar</i>	<i>Dependent on the pressure range of the tube/pipe used and the temperature used</i>
<i>Materials</i>	<i>Brass, nickel-plated or polished</i>	<i>CW614N and CW617N</i>
<i>Thread</i>	<i>Cyl. thread, DIN EN ISO 228 Con. thread, DIN EN 10226 (ISO7 / DIN Medium 2999)</i>	
<i>Medium</i>	<i>Pneumatic, oil-hydraulic and hydraulic circuits</i>	
<i>Tubes/pipes</i>	<i>Suitable for metal pipes (copper, brass, steel, etc.) and for plastic pipes with inner reinforcement</i>	

201

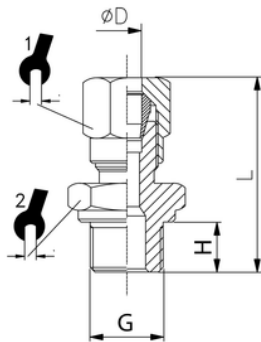
Gerade Einschraubverschraubung kon.
Straight male adaptor (con.)



ITV	ØD	R	H	L	∅	∅
94801	4	R1/8	8	27	10	10
94802	6	R1/8	8	28	12	12
94803	6	R1/4	11	32,5	12	14
94804	8	R1/8	8	29,5	14	12
94805	8	R1/4	11	33	14	14
94806	8	R3/8	11,5	33	14	17
94807	10	R1/4	11	37,5	19	17
94808	10	R3/8	11,5	38	19	17
94809	10	R1/2	14	40,5	19	22
94810	12	R3/8	11,5	39	22	19
94811	12	R1/2	14	41	22	22
94821	14	R1/2	14	42,5	27	22
94812	15	R1/2	14	42,5	27	22
94832	16	R1/2	14	42	30	24
94833	18	R1/2	14	43	32	26

201 z

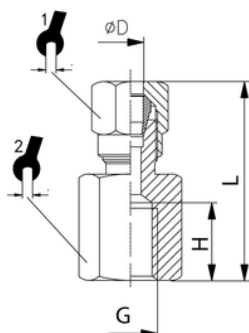
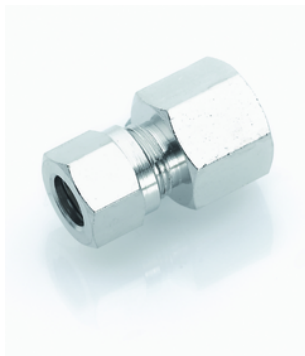
Gerade Einschraubverschraubung zyl.
Straight male adaptor cyl.



ITV	ØD	G	H	L	∅	∅
94901	4	G1/8	6	25	10	14
94902	6	G1/8	6	26	12	13
94907	6	G1/4	8	29,5	12	17
94903	8	G1/8	6	27,5	14	14
94904	8	G1/4	8	30	14	17
94905	10	G1/4	8	34,5	19	17
94906	10	G3/8	9	36	19	19
94908	12	G3/8	10	40	22	22
94910	12	G1/2	12	42	22	27

202

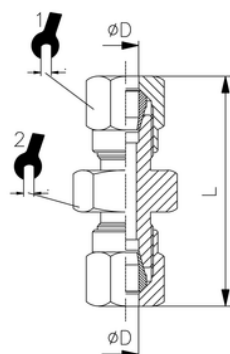
Manometerverschraubung
Straight female adaptor



ITV	ØD	G	H	L	1	2
95000	4	G1/8	8	24,5	10	14
95001	6	G1/8	8,5	25,5	12	14
95002	6	G1/4	11	30	12	17
95003	8	G1/8	8	26,5	14	14
95004	8	G1/4	11	31	14	17
95005	8	G3/8	11,5	31	14	20
95006	10	G1/4	11	35,5	19	17
95007	10	G3/8	11,5	36,5	19	20
95008	12	G3/8	11,5	35	22	20
95009	12	G1/2	15	37	22	24
95010	14	G1/2	15	40	27	24
95011	15	G1/2	15	40	27	24
95012	16	G1/2	15	40,5	30	24
95013	18	G1/2	15	40	32	26

203

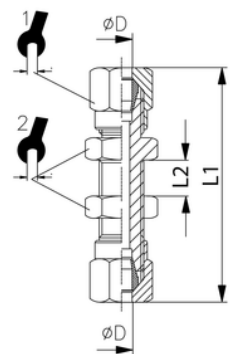
Gerader Verbinder
Straight connector



ITV	ØD	L	1	2
94601	4	34	10	10
94602	6	35	12	12
94603	8	38,5	14	14
94604	10	47,5	19	17
94605	12	46	22	19
94615	14	53	27	24
94606	15	50	27	24
94611	16	51,5	30	24
94612	18	54	32	26

204

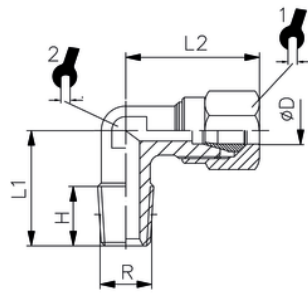
Schottverschraubung
Bulkhead union



ITV	ØD	L1	L2 max	1	2
94701	6	51,5	15,5	12	14
94702	8	55,5	16,5	14	16
94703	10	62,5	15,5	19	19
94704	12	64,5	16,0	22	22
94705	15	69,5	18,0	27	25

205

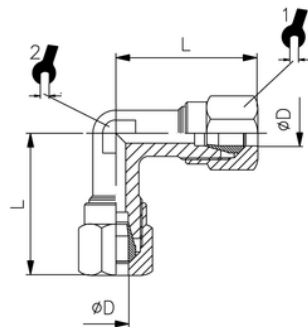
Winkeleinschraubverschraubung konisch
Elbow male adaptor con.



ITV	ØD	R	H	L1	L2	1	2
92801	4	R1/8	8	16	21	10	9
92802	6	R1/8	8	16	22	12	9
92803	6	R1/4	11	20	24,5	12	11
92804	8	R1/8	8	17	24	14	11
92805	8	R1/4	11	20	24	14	11
92806	8	R3/8	11,5	24	27	14	13
92807	10	R1/4	11	23,5	32	19	13
92808	10	R3/8	11,5	24	32	19	13
92809	10	R1/2	14	28,5	34	19	15
92810	12	R3/8	11,5	25,5	34,5	22	15
92811	12	R1/2	14	28,5	34,5	22	15
92821	14	R1/2	14	30	38	27	17
92812	15	R1/2	14	30	38	27	17
92813	16	R1/2	14	31,5	39,5	30	19
92814	18	R1/2	14	34	44	32	22

206

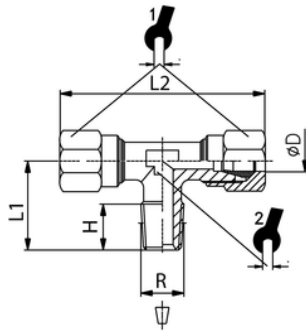
Winkelverbinder
Elbow connector



ITV	ØD	L	1	2
92601	4	21	10	9
92602	6	23	12	9
92603	8	24	14	11
92604	10	32	19	13
92605	12	34,5	22	15
92615	14	38	27	17
92606	15	38	27	17
92607	16	39,5	30	19
92608	18	44	32	22

207

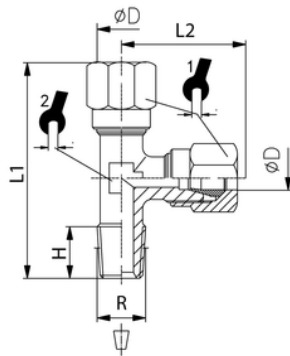
T-Einschraubverschraubung konisch
Centre male t-adaptor



ITV	ØD	R	H	L1	L2	⌘	⌘
92201	4	R1/8	8	16	42	10	9
92202	6	R1/8	8	16	46	12	9
92203	6	R1/4	11	20	48	12	11
92204	8	R1/8	8	17	48	14	11
92205	8	R1/4	11	20	48	14	11
92206	8	R3/8	11,5	24	54	14	13
92207	10	R1/4	11	23,5	64	19	13
92208	10	R3/8	11,5	24	64	19	13
92210	12	R3/8	11,5	25,5	69	22	15
92211	12	R1/2	14	28,5	69	22	14
92221	14	R1/2	14	30	76	27	17
92212	15	R1/2	14	30	76	27	17
92213	16	R1/2	14	31,5	79	30	19
92214	18	R1/2	14	34	88	32	22

208

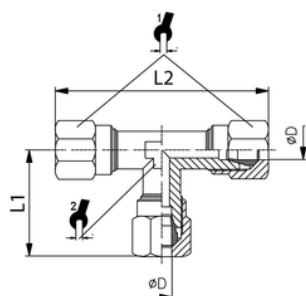
L-Einschraubverschraubung konisch
Off-set male adaptor con.



ITV	ØD	R	H	L1	L2	⌘	⌘
92300	4	R1/8	8	37	21	10	9
92301	6	R1/8	8	39	23	12	9
92302	6	R1/4	11	44,5	24,5	12	11
92303	8	R1/8	8	41	24	14	11
92304	8	R1/4	11	44	24	14	12
92305	8	R3/8	11,5	56	32	14	13
92306	10	R1/4	11	55,5	32	19	13
92307	10	R3/8	11,5	56	32	19	13
92309	12	R3/8	11,5	60	34,5	22	15
92310	12	R1/2	15	63	34,5	22	15
92314	14	R1/2	15	68	38	27	17
92311	15	R1/2	14	67	38	27	17
92312	16	R1/2	14	71	39,5	30	19
92313	18	R1/2	14	77	42,5	32	22

209

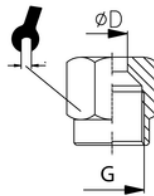
T-Verschraubung
T-connector



ITV	ØD	L1	L2	⌘	⌘
92001	4	21	42	10	9
92002	6	23	46	12	9
92003	8	24	48	14	11
92004	10	32	64	19	13
92005	12	34,5	69	22	15
92015	14	38	76	27	17
92006	15	38	76	27	17
92007	16	39,5	79	30	19
92008	18	44	88	32	22

210

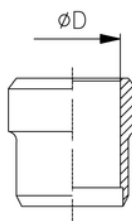
Überwurfmutter
Union nut



ITV	øD	G	t
96801	4	M8x1	10
96802	6	M10x1	12
96803	8	M12x1	14
96804	10	M16x1,5	19
96805	12	M18x1,5	22
96806	14	M22x1,5	27
96807	15	M22x1,5	27
96808	16	M24x1,5	30
96809	18	M26x1,5	32

211

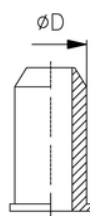
Schneidring
Olive



ITV	øD
97401	4
97402	6
97403	8
97404	10
97405	12
97406	14
97407	15
97408	16
97409	18

212

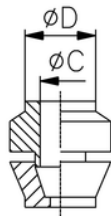
Verstärkungshülse
Reinforcing sleeve



ITV	øD
97506	2
97501	4
97502	6
97503	8
97508	9
97504	10
97510	11
97505	12
97507	14
97509	18

213

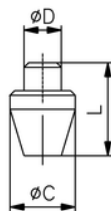
Reduzierung 2-teilig
Two-part reduction



ITV	ØD	ØC
97511	6	4
97512	8	6
97513	12	8

214

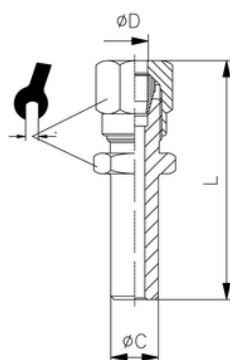
Stopfen
Plug



ITV	ØD	ØC	L
97520	4	5,5	7,5
97521	6	8	10

215

Adapter
Adaptor

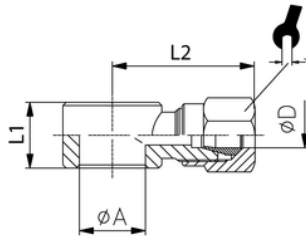


ITV	ØD	ØC	L	t
97533	6	8	34	12

216

Ringstück
Single banjo body

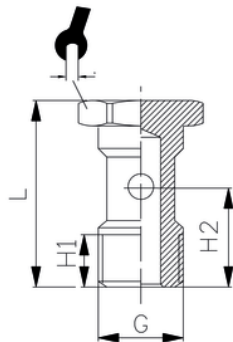
für Hohlgeschrauben mit Gewindegröße G
for screws with thread G



ITV	ØD	G	ØA	L1	L2	↳
95101	4	G1/8	10	14,5	24,5	10
95102	6	G1/8	10	14,5	26,5	12
95103	6	G1/4	13	14,5	28,5	12
95104	8	G1/8	10	14,5	25,5	14
95105	8	G1/4	13	14,5	28	14

407

Hohlschraube 1-fach
Single hollow screw



ITV	G	H1	H2	L	↳
14101	M5	6	9,6	17,5	8
14106	M6	7,5	10,5	19	8
14102	G1/8	6,5	15	28	14
14403	G1/4	12	18	33	17
14404	G3/8	13,5	21	36	19
14405	G1/2	15	23,5	42	24