

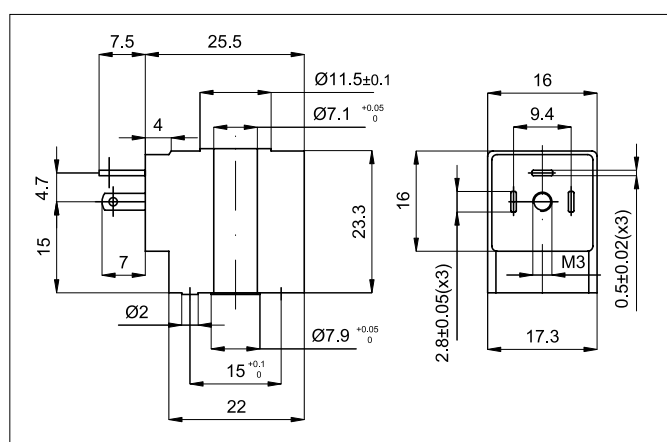
Type ASA19

Series of coils with low electrical consumption and conforming to EN 60204.1 and VDE 0580 standards, class F.

They can be mounted on the following valves: (AE18... out production).

For the connectors type A192... see page 2.210.10.

Voltage	Code	Item
12V DC	034281	ASA1901200
12V AC	034282	ASA1901250
24V DC	034283	ASA1902400
24V AC	034284	ASA1902450
48V AC	034285	ASA1904850
110V AC	034286	ASA1911050
230V AC	034287	ASA1922050



Technical data	Direct current	Alternating current
Voltage tolerance	± 10%	± 10%
Frequency tolerance	-	± 5%
Electrical consumption	1,5 W	3 VA
Voltage	12 and 24 V	12, 24, 48, 110, 230 V 50/60HZ
Duty cycle	100% ED	
Class protection	IP 65 (with connector already mounted)	
Temperature range	-20 °C ÷ + 50 °C	
Response time	10 ms	

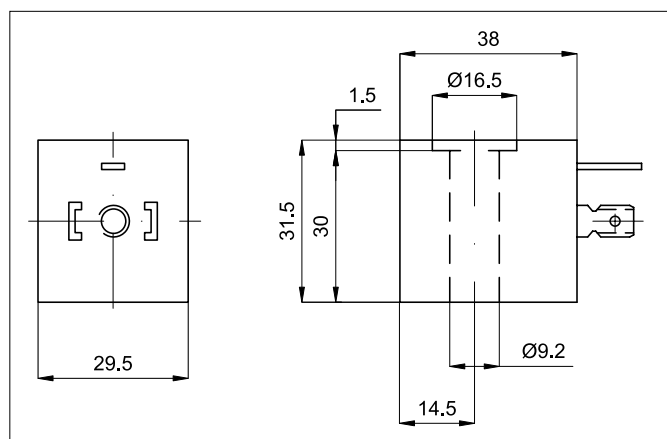
Type ASA2

Series of low consumption coils according EN 60204.1 and VDE 0580 standards, class F.

They can be used on the following valves: AE22..., AEA1..., AEA2...

For connectors type A182... see page 2.210.30.

Voltage	Code	Item
12V DC	032109	ASA201200
12V AC	032110	ASA201250
24V DC	032111	ASA202400
24V AC	032112	ASA202450
48V AC	032113	ASA204850
110V AC	032114	ASA211050
230V AC	032115	ASA222050



For **ATEX** coils see page 2.200.50



Technical data	Direct current	Alternating current
Voltage tolerance	± 10%	- 10% ÷ +15%
Frequency tolerance	-	± 5%
Electrical consumption	2,5 W	5 VA
Voltage	12 and 24 V	12, 24, 48, 110, 230 V 50/60HZ
Duty cycle	100% ED	
Class protection	IP 65 (with connector already mounted)	
Temperature range	-20 °C ÷ + 50 °C	
Response time	10 ms	