

Clippard's line of Acetal head stainless steel cylinders offer all of the advantages of Clippard's high quality, reliable stainless steel cylinders, with the added benefit of corrosion resistance. These cylinders are ideal for applications where equipment cleanliness is critical, since they can be put to work in harsh environments requiring frequent use of hot water and chemicals.

Clippard corrosion-resistant cylinders are available in bore sizes ranging from 5/8" to 1 1/2". Standard stroke lengths range from 1/2" to 6". The cylinder tubes and rods are made of stainless steel. The rods are ground, polished, and roller burnished. Nitrile seals are standard with a FKM option available for compatibility. A magnetic piston is also optional.

These lightweight cylinders have a temperature range from 32 to 180°F, and have a pressure rating of 150 psig (air). A variety of mounting styles are available.

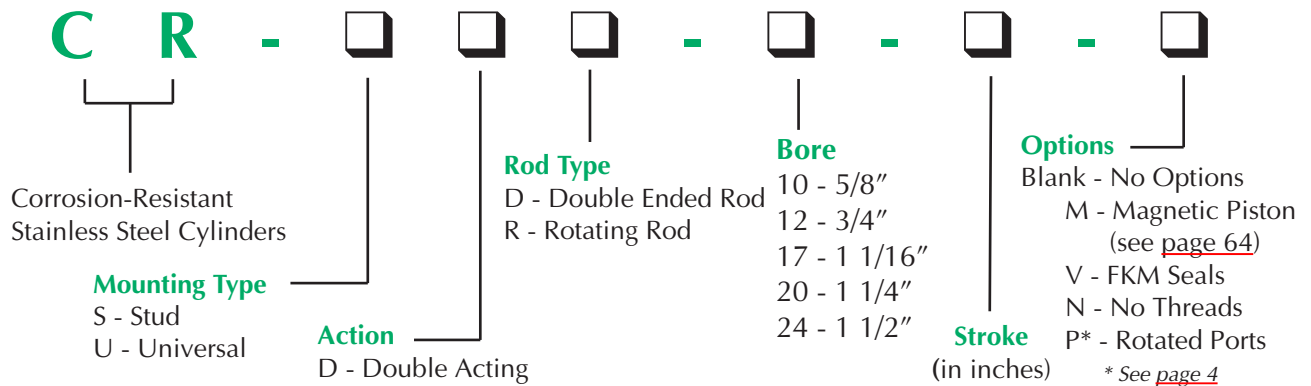


Features

- Acetal heads with a positive double seal
- Available with magnetic pistons
- 303 stainless steel ground, polished and roller burnished piston rods
- Precision rolled construction for a solid leakproof cylinder
- Nitrile seals (FKM optional for compatibility only)
- 304 stainless steel tube
- Pressure Range 0 to 150 psig
- Temperature range: 32 to 180°F
- Optional stainless steel mounting accessories available for specific bore sizes
- Aluminum alloy pistons, optional Acetal pistons available; consult factory



NUMBERING SYSTEM



5/8" BORE CORROSION-RESISTANT CYLINDER

CR-SDD-10-□-□

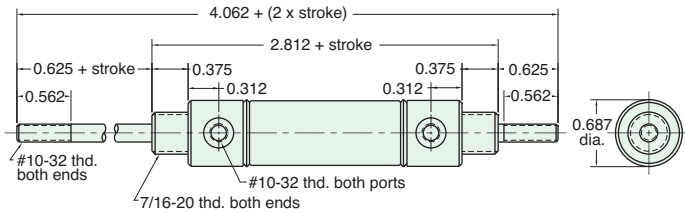
Double Acting

Mount: Stud
Type: Double Rod

Standard Stroke Lengths: 1/2", 1", 1-1/2", 2", 3", 4"

Options: M, V, N, P2, P3, P4, P5, P6, P7, P8

For M option add 0.312



Furnished without nut(s). Order Part No. [N07-20-SS.](#)

CR-SDR-10-□-□

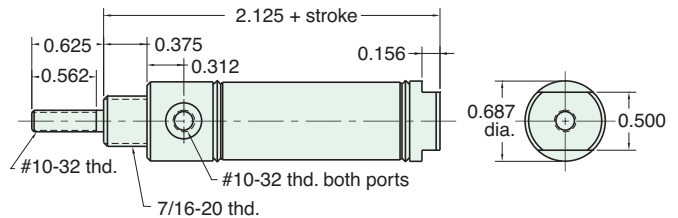
Double Acting

Mount: Stud
Type: Rotating Rod

Standard Stroke Lengths: 1/2", 1", 1-1/2", 2", 3", 4"

Options: M, V, N

For M option add 0.312



Furnished without nut(s). Order Part No. [N07-20-SS.](#)

CR-UDR-10-□-□

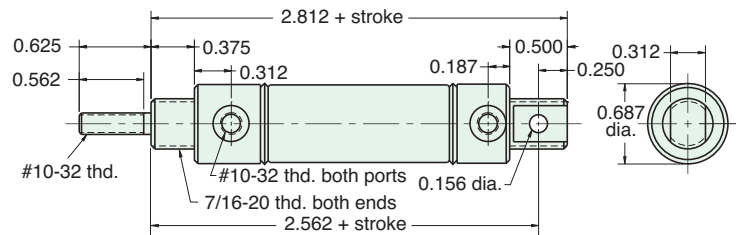
Double Acting

Mount: Universal
Type: Rotating Rod

Standard Stroke Lengths: 1/2", 1", 1-1/2", 2", 3", 4"

Options: M, V, N, P2, P3, P4, P5, P6, P7, P8

For M option add 0.312



Furnished without nut(s). Order Part No. [N07-20-SS.](#)

Stainless Steel Mounting

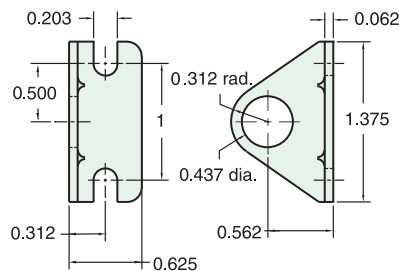
Foot Bracket

Model Number: [FB-0892-SS](#)

Nut

Model Number: [N07-20-SS](#)

Max. Torque in lbs.: 4.0



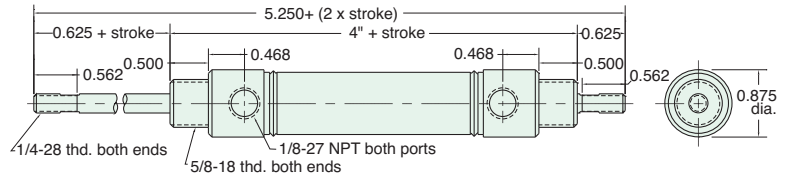
3/4" BORE CORROSION-RESISTANT CYLINDER

CR-SDD-12-□-□

Double Acting

Mount: Stud
Type: Double Rod

Standard Stroke Lengths: 1", 2", 3", 4", 5", 6"
Options: M, V, N, P2, P3, P4, P5, P6, P7, P8



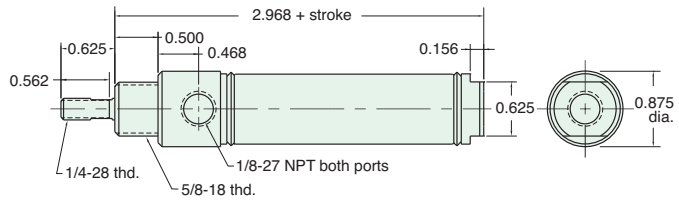
Furnished without nut(s). Order Part No. [N10-18-SS.](#)

CR-SDR-12-□-□

Double Acting

Mount: Stud
Type: Rotating Rod

Standard Stroke Lengths: 1/2", 1", 1-1/2", 2", 3", 4", 5", 6"
Options: M, V, N, P6, P7, P8



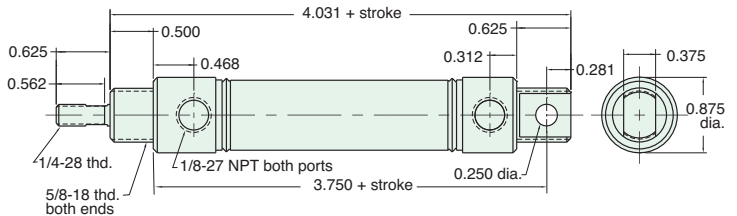
Furnished without nut(s). Order Part No. [N10-18-SS.](#)

CR-UDR-12-□-□

Double Acting

Mount: Universal
Type: Rotating Rod

Standard Stroke Lengths: 1/2", 1", 1-1/2", 2", 3", 4", 5", 6", 8", 10", 12"
Options: M, V, N, P2, P3, P4, P5, P6, P7, P8

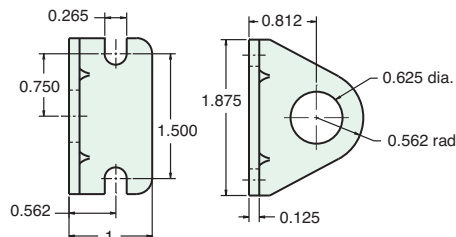


Furnished without nut(s). Order Part No. [N10-18-SS.](#)

Stainless Steel Mounting

Foot Bracket
Model Number: [FB-1791-SS](#)

Nut
Model Number: [N10-18-SS](#)
Max. Torque in lbs.: 12



All Stainless Steel mounting accessories available on [page 67.](#)

1 1/16" BORE CORROSION-RESISTANT CYLINDER

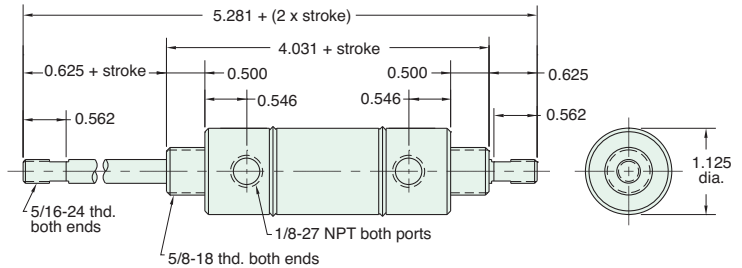
CR-SDD-17-□-□

Double Acting



Mount: Stud
Type: Double Rod

Standard Stroke Lengths: 1", 2", 3", 4", 5", 6"
Options: M, V, N, P6, P7, P8



Furnished without nut(s). Order Part No. [N10-18-SS.](#)

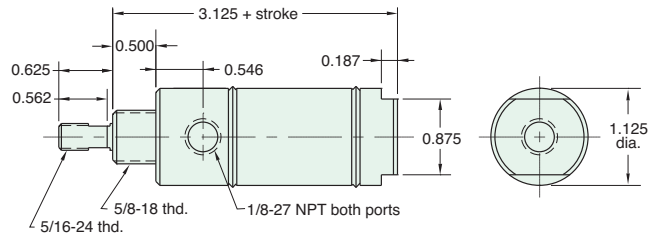
CR-SDR-17-□-□

Double Acting



Mount: Stud
Type: Rotating Rod

Standard Stroke Lengths: 1/2", 1", 1-1/2", 2", 3", 4", 5", 6"
Options: M, V, N



Furnished without nut(s). Order Part No. [N10-18-SS.](#)

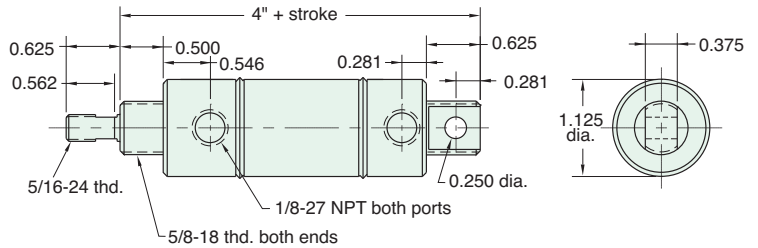
CR-UDR-17-□-□

Double Acting



Mount: Universal
Type: Rotating Rod

Standard Stroke Lengths: 1/2", 1", 1-1/2", 2", 3", 4", 5", 6",
Options: M, V, N, P2, P3, P4, P5, P6, P7, P8

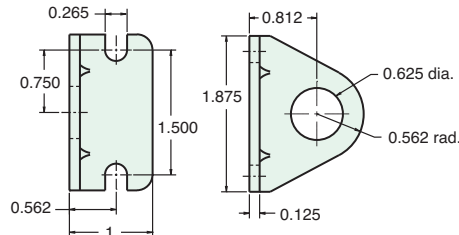


Furnished without nut(s). Order Part No. [N10-18-SS.](#)

Stainless Steel Mounting

Foot Bracket
Model Number: [FB-1791-SS](#)

Nut
Model Number: [N10-18-SS](#)
Max. Torque in lbs.: 12



All Stainless Steel mounting accessories available on [page 68.](#)

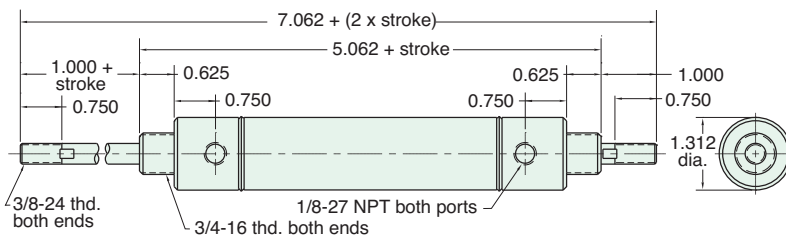
1 1/4" BORE CORROSION-RESISTANT CYLINDER

CR-SDD-20-□-□

Mount: Stud
Type: Double Rod

Standard Stroke Lengths: 1", 2", 3", 4", 5", 6"
Options: M, V, N, P6, P7, P8

Double Acting



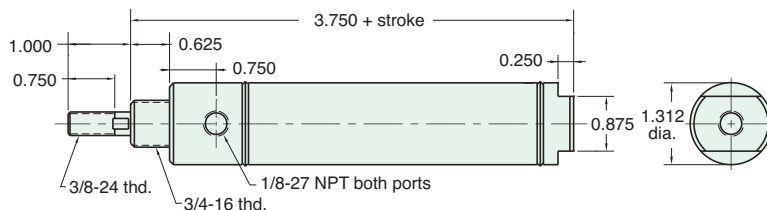
Furnished without nut(s). Order Part No. [N12-16-SS.](#)

CR-SDR-20-□-□

Mount: Stud
Type: Rotating Rod

Standard Stroke Lengths: 1/2", 1", 1-1/2", 2", 3", 4", 5", 6"
Options: M, V, N

Double Acting



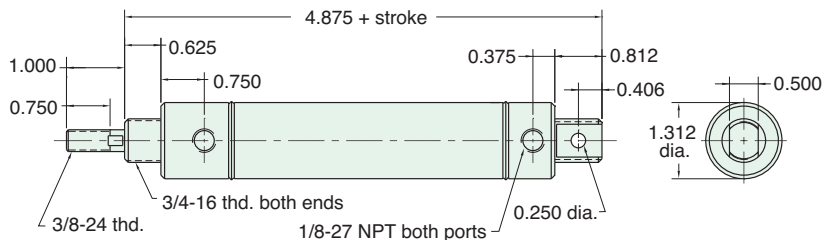
Furnished without nut(s). Order Part No. [N12-16-SS.](#)

CR-UDR-20-□-□

Mount: Universal
Type: Rotating Rod

Standard Stroke Lengths: 1/2", 1", 1-1/2", 2", 3", 4", 5", 6", 8", 10", 12"
Options: M, V, N, P2, P3, P4, P5, P6, P7, P8

Double Acting

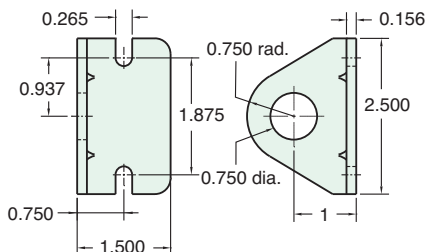


Furnished without nut(s). Order Part No. [N12-16-SS.](#)

Stainless Steel Mounting

Foot Bracket
Model Number: [FB-2491-SS](#)

Nut
Model Number: [N12-16-SS](#)
Max. Torque in lbs.: 20





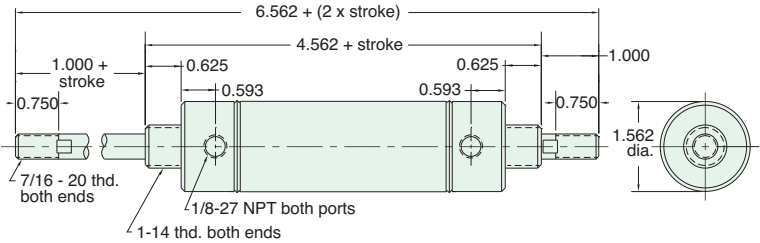
1 1/2" BORE CORROSION-RESISTANT CYLINDER

CR-SDD-24-□-□

Mount: Stud
Type: Double Rod

Standard Stroke Lengths: 1", 2", 3", 4", 5", 6", 8", 10", 12"
Options: M, V, N, P6, P7, P8

Double Acting



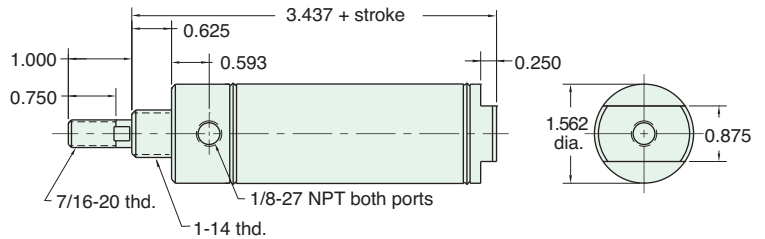
Furnished without nut(s). Order Part No. [N16-14-SS.](#)

CR-SDR-24-□-□

Mount: Stud
Type: Rotating Rod

Standard Stroke Lengths: 1/2", 1", 1-1/2", 2", 3", 4", 5", 6"
Options: M, V, N

Double Acting



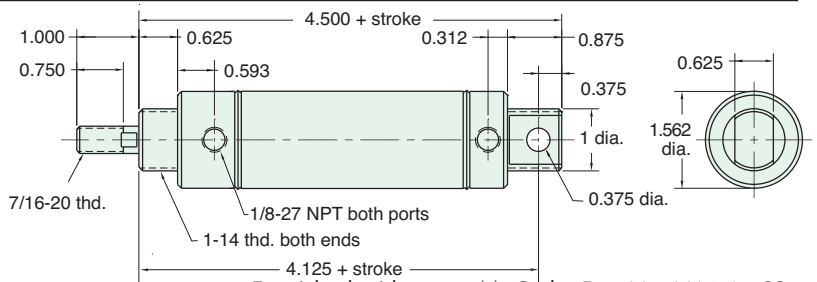
Furnished without nut(s). Order Part No. [N16-14-SS.](#)

CR-UDR-24-□-□

Mount: Universal
Type: Rotating Rod

Standard Stroke Lengths: 1/2", 1", 1-1/2", 2", 3", 4", 5", 6", 8", 10", 12"
Options: M, V, N, P2, P3, P4, P5, P6, P7, P8

Double Acting

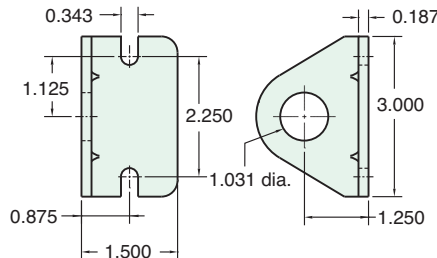


Furnished without nut(s). Order Part No. [N16-14-SS.](#)

Stainless Steel Mounting

Foot Bracket
Model Number: [FB-2891-SS](#)

Nut
Model Number: [N16-14-SS](#)
Max. Torque in lbs.: 30



All Stainless Steel mounting accessories available on [page 68.](#)