

## COMMON FEATURES

Media: water, oil, air

Ambient temperature: -10°C ÷ +50°C

Body material: brass (CW617N EN 12165)

Operator material: stainless steel

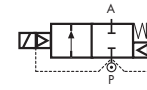
Protection class: IP 65 (with connector and gasket)

## OPTIONS

EPDM seal, temperature max. 120°C (e.g. code D266DEU)

NPT connection on request, minimum batch may be required (e.g. code D264DBUN)

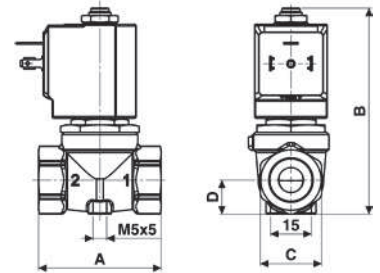
## TYPE: D264/265/266



Normally Closed



DIMENSIONS & WEIGHTS		D264	D265	D266
<b>G connection</b>	[ISO 228]	1/4"	3/8"	1/2"
<b>A</b>	[mm]	54	54	54
<b>B</b>	[mm]	89	89	89
<b>C</b>	[mm]	Hex 27	Hex 27	Hex 27
<b>D</b>	[mm]	15	15	15
<b>weight</b>	[kg]	0.45	0.4	0.4



Flow direction overseat 1 → 2

VALVE	nominal Ø	flow rate Kvs	OPD			COILS	
			min.	max. AC	max. DC	code	[Volts/Hz]
code	[mm]	[l/min]	[barg]	[barg]	[barg]	code	[Volts/Hz]
<b>D264DBU</b>	10.5	21	0.1	16	7	7250	24v DC
<b>D265DBU</b>	10.5	24	0.1	16	7	7200	24v 50/60Hz
<b>D266DBU</b>	10.5	25	0.1	16	7	7400	110v 50Hz - 120v 60Hz
						7600	200v 50Hz - 220v 60Hz
						7700	230v 50Hz - 240v 60Hz

### D264/265/266 - NBR seal, NC -

Media temperature: -10°C ÷ +90°C

Operator seal and diaphragm material: NBR

Coil power: AC 18v<sub>A</sub> (holding)

AC 36v<sub>A</sub> (inrush)

DC 14w

VALVE	nominal Ø	flow rate Kvs	OPD			COILS	
			min.	max. AC	max. DC	code	[Volts/Hz]
code	[mm]	[l/min]	[barg]	[barg]	[barg]	code	[Volts/Hz]
<b>D264DVU</b>	10.5	21	0.1	16	7	7250	24v DC
<b>D265DVU</b>	10.5	24	0.1	16	7	7200	24v 50/60Hz
<b>D266DVU</b>	10.5	25	0.1	16	7	7400	110v 50Hz - 120v 60Hz
						7600	200v 50Hz - 220v 60Hz
						7700	230v 50Hz - 240v 60Hz

### D264/265/266 - FKM seal, NC -

Media temperature: -10°C ÷ +130°C

Operator seal and diaphragm material: FKM

Coil power: AC 18v<sub>A</sub> (holding)

AC 36v<sub>A</sub> (inrush)

DC 14w

