

TECHNICAL SPECIFICATIONS

- Media: water, oil, air
- Media temperature: $-10^{\circ}\text{C} \div +90^{\circ}\text{C}$
- Ambient temperature: $-10^{\circ}\text{C} \div +50^{\circ}\text{C}$
- Body material: brass (CW617N EN 12165)
- Operator material: stainless steel
- Operator seal material: foodgrade FKM
- Diaphragm material: NBR
- Coil power: DC 6w
- Protection class: IP 65 (with connector and gasket)

OPTIONS

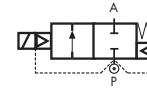
- FKM seal, temperature max. 130°C (e.g. code LD266DVU)
- EPDM seal, temperature max. 120°C (e.g. code LD266DEU)

NOTES

The valve has been tested with supply set of 8 batteries type AA obtaining the following performances:

- 28.000 cycles (refer to batteries life time, after that batteries need to be replaced)
- pulse time $20 \div 50$ ms

TYPE: LD266



Normally Closed


SELECTION TABLE

VALVE	nominal Ø	flow rate Kvs	OPD		
			min.	max. AC	max. DC
code	[mm]	[l/min]	[barg]	[barg]	[barg]
LD266DBU	10.5	25	0.1	—	5

COILS class 'H' only	
code	[Volts/Hz]
70T1	6v DC

Ci riserviamo il diritto di apportare modifiche senza alcun preavviso

DIMENSIONS & WEIGHTS		LD266
G connection	[ISO 228]	1/2"
A	[mm]	54
B	[mm]	89
C	[mm]	Hex 27
D	[mm]	15
weight	[kg]	0.4

