

COMMON FEATURES

Media[Ⓞ]: water, oil, air
 Media temperature: -10°C ÷ +130°C
 Ambient temperature: -10°C ÷ +50°C
 Body material: brass (CW719R EN 12165) low lead content
 Orifice material: stainless steel (1.4305 EN 10088/AISI 303)
 Operator material: stainless steel
 Seal material: foodgrade FKM
 Protection class: IP 65 (with connector and gasket)

OPTIONS

EPDM seal, temperature max. 120°C (e.g. code RB397CEC)
 Electroless nickel plating treatment (e.g. code B397CVCK)

NOTES

Ⓞ Valve suitable for contact with food media as per the EEC Directives and Regulations. For more specific information, please contact M&M Sales Department.

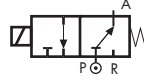
DIMENSIONS & WEIGHTS		B397	RB397	SB397
G connection	[ISO 228]	1/8"	1/8"	1/8"
A	[mm]	30	30	30
B	[mm]	67.8	72.5	67.8
C	[mm]	18	18	18
D	[mm]	7	7	7
weight	[kg]	0.15	0.16	0.15

VALVE	nominal Ø	flow rate Kvs	OPD		
			min.	max. AC	max. DC
code	[mm]	[l/min]	[barg]	[barg]	[barg]
B397CVA	1.0	0.5	0	18	18
B397CVB	1.2	0.7	0	15	15
B397CVC	1.5	1.0	0	10	10
B397CVE	2.0	1.9	0	5	5
B397CVH	3.0	3.5	0	2	2

VALVE	nominal Ø		flow rate Kvs	OPD		
	1 → 2	1 → 3		min.	max. AC	max. DC
code	[mm]	[mm]	[l/min]	[barg]	[barg]	[barg]
SB397CVB	1.2	1.7	0.7	0	6	3
SB397CVC	1.5	1.7	1.0	0	4.5	2

VALVE	nominal Ø	flow rate Kvs	OPD		
			min.	max. AC	max. DC
code	[mm]	[l/min]	[barg]	[barg]	[barg]
RB397CVA	1.0	0.5	0	15	12
RB397CVB	1.2	0.7	0	15	12
RB397CVC	1.5	1.0	0	10	8
RB397CVE	2.0	1.9	0	8	6
RB397CVG	2.5	2.5	0	4	4
RB397CVH	3.0	3.5	0	3.5	3.5

TYPE: SB397



Normally Open

TYPE: B397

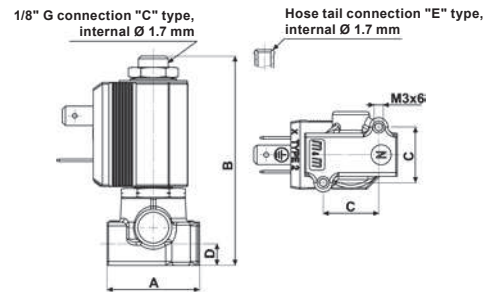


Normally Closed

TYPE: RB397



Normally Open



Flow direction underseat 2 → 1

COILS	
code	[Volts/Hz]
2250	24v DC
2200	24v 50/60Hz
2400	110v 50Hz - 120v 60Hz
2600	200v 50Hz - 220v 60Hz
2700	230v 50Hz - 240v 60Hz

B397 - FKM seal, NC
 Coil power: AC 10v_A (holding)
 AC 16v_A (inrush)
 DC 7w
OPTIONS
M Manual override (e.g. code B397CVBM)
A Armature tube with hose tail Ø 6 mm (e.g. code B397EVE)
UL approved coils (e.g. code 270B)

COILS	
code	[Volts/Hz]
2250	24v DC
2200	24v 50/60Hz
2400	110v 50Hz - 120v 60Hz
2600	200v 50Hz - 220v 60Hz
2700	230v 50Hz - 240v 60Hz

SB397 - FKM seal, 2nd SERVICE -
 Coil power: AC 10v_A (holding)
 AC 16v_A (inrush)
 DC 7w
OPTIONS
M Manual override (e.g. code SB397CVCM).
NOTES
 Flow direction: **OFF** 3 → 1 - **ON** 1 → 2

COILS	
code	[Volts/Hz]
2250	24v DC
2200	24v 50/60Hz
2400	110v 50Hz - 120v 60Hz
2600	200v 50Hz - 220v 60Hz
2700	230v 50Hz - 240v 60Hz

RB397 - FKM seal, NO
 Coil power: AC 10v_A (holding)
 AC 16v_A (inrush)
 DC 7w

We reserve the right to make changes without notice