

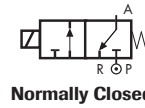
## COMMON FEATURES

Body material: stainless steel (1.4305 EN 10088/AISI 303)  
 Orifice material: stainless steel (1.4305 EN 10088/AISI 303)  
 Operator material: stainless steel  
 Protection class: IP 65 (with connector and gasket)

## OPTIONS

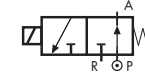
Available with body thread connection 1/8" (e.g. code D398DVC), performance ratings remain the same as D399DVC.  
**NPT** connection on request, minimum batch may be required (e.g. code RD399CVGN)

## TYPE: D398/399



Normally Closed

## TYPE: RD398/399



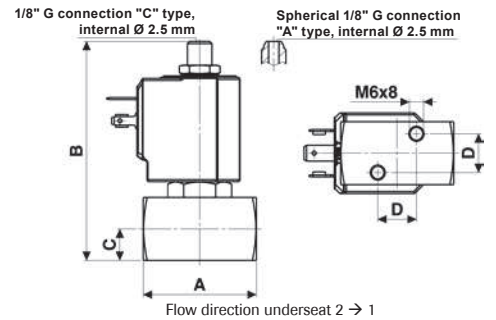
Normally Open



DIMENSIONS & WEIGHTS		D398	D399
<b>G connection</b>	[ISO 228]	1/8"	1/4"
<b>A</b>	[mm]	45	45
<b>B</b>	[mm]	87	87
<b>C</b>	[mm]	12.5	12.5
<b>D</b>	[mm]	15.4	15.4
<b>weight</b>	[kg]	0.35	0.35

VALVE	nominal Ø	flow rate Kvs	OPD		
			min.	max. AC	max. DC
code	[mm]	[l/min]	[barg]	[barg]	[barg]
<b>D399CVC</b>	1.5	1.3	0	18	18
<b>D399CVE</b>	2.0	2.2	0	10	10
<b>D399CVG</b>	2.5	3.4	0	7	7
<b>D399CVH</b>	3.0	4.5	0	5	5

COILS	
code	[Volts/Hz]
7250	24v DC
7200	24v 50/60Hz
7400	110v 50Hz - 120v 60Hz
7600	200v 50Hz - 220v 60Hz



## D398/399 - FKM seal, NC -

**Media:** water, oil, air and aggressive fluids  
**Media temperature:** -10°C ÷ +130°C  
**Ambient temperature:** -10°C ÷ +50°C  
**Seal material:** foodgrade FKM  
**Coil power:** AC 18vA (holding)  
 AC 36vA (inrush)  
 DC 14w

## OPTIONS

**Armature tube with spherical 1/8" G connection** (e.g. code D398AVC)  
**Silver shading ring** (e.g. code D398CVGA)  
**UL approved coils** (e.g. code 770R)

VALVE	nominal Ø	flow rate Kvs	OPD		
			min.	max. AC	max. DC
code	[mm]	[l/min]	[barg]	[barg]	[barg]
<b>D399CLC</b>	1.5	1.3	0	9	9
<b>D399CLE</b>	2.0	2.2	0	9	9
<b>D399CLH</b>	3.0	4.5	0	5	5

COILS class 'H' only	
code	[Volts/Hz]
7251	24v DC
7201	24v 50/60Hz
7401	110v 50Hz - 120v 60Hz
7601	200v 50Hz - 220v 60Hz
7701	230v 50Hz - 240v 60Hz

## D398/399 - Sigodur seal, NC -

**Media:** steam  
**Media temperature:** -10°C ÷ +180°C  
**Ambient temperature:** -10°C ÷ +70°C  
**Seal material:** Sigodur (filled PTFE)  
**Coil power:** AC 18vA (holding)  
 AC 36vA (inrush)  
 DC 14w

## OPTIONS

**Silver shading ring** (e.g. code D398CLCA)

## NOTES

Seamless tube as standard

VALVE	nominal Ø	flow rate Kvs	OPD		
			min.	max. AC	max. DC
code	[mm]	[l/min]	[barg]	[barg]	[barg]
<b>RD399CVC</b>	1.5	1.3	0	15	15
<b>RD399CVE</b>	2.0	2.2	0	10	10
<b>RD399CVH</b>	3.0	4.5	0	4	4

COILS class 'H' only	
code	[Volts/Hz]
7251	24v DC
7201	24v 50/60Hz
7401	110v 50Hz - 120v 60Hz
7601	200v 50Hz - 220v 60Hz
7701	230v 50Hz - 240v 60Hz

## RD398/399 - FKM seal, NO -

**Media:** water, oil, air and aggressive fluids  
**Media temperature:** -10°C ÷ +130°C  
**Ambient temperature:** -10°C ÷ +50°C  
**Seal material:** foodgrade FKM  
**Coil power:** AC 18vA (holding)  
 AC 36vA (inrush)  
 DC 14w

## NOTES

Protective treatment of operators is recommended, minimum batch may be required.