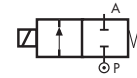


COMMON FEATURES

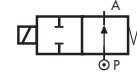
- Body material: brass (CW617N EN 12165)
- Orifice material: stainless steel (1.4305 EN 10088/AISI 303)
- Operator material: stainless steel
- Protection class: IP 65 (with connector and gasket)

TYPE: D201



Normally Closed

TYPE: RD201



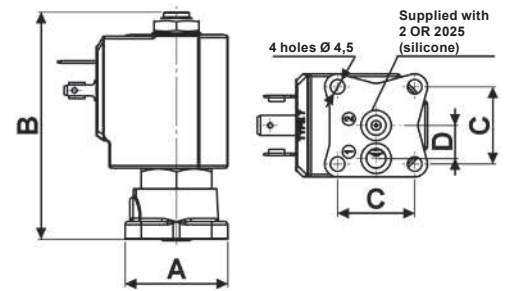
Normally Open



DIMENSIONS & WEIGHTS		D201	RD201
G connection	[ISO 228G]	/	/
A	[mm]	32	32
B	[mm]	70.6	68.4
C	[mm]	24	24
D	[mm]	10.25	10.25
weight	[kg]	0.25	0.3

VALVE	nominal Ø	flow rate Kvs	OPD		
			min.	max. AC	max. DC
code	[mm]	[l/min]	[barg]	[barg]	[barg]
D201DVC	1.5	1.3	0	24	24
D201DVE	2.0	2.2	0	20	20
D201DVG	2.5	3.4	0	18	18
D201DVH	3.0	4.5	0	15	10

COILS	
code	[Volts/Hz]
7250	24v DC
7200	24v 50/60Hz
7400	110v 50Hz - 120v 60Hz
7600	200v 50Hz - 220v 60Hz
7700	230v 50Hz - 240v 60Hz



Flow direction overseat 1 → 2

D201 - FKM seal, NC -

- Media: water, oil, air
- Media temperature: -10°C ÷ +130°C
- Ambient temperature: -10°C ÷ +50°C
- Seal material: foodgrade FKM
- Coil power: AC 18v_A (holding)
AC 36v_A (inrush)
DC 14w

OPTIONS

- EPDM** seal, temperature max. 120°C (e.g. code D201DEC)
- M** manual override (e.g. code D201DVG_M)

VALVE	nominal Ø	flow rate Kvs	OPD		
			min.	max. AC	max. DC
code	[mm]	[l/min]	[barg]	[barg]	[barg]
RD201DVC	1.5	1.3	0	24	24
RD201DVG	2.5	3.4	0	16	16
RD201DVH	3.0	4.5	0	10	10

COILS class 'H' only	
code	[Volts/Hz]
7251	24v DC
7201	24v 50/60Hz
7401	110v 50Hz - 120v 60Hz
7601	200v 50Hz - 220v 60Hz
7701	230v 50Hz - 240v 60Hz

RD201 - FKM seal, NO -

- Media: water, oil, air
- Media temperature: -10°C ÷ +130°C
- Ambient temperature: -10°C ÷ +50°C
- Seal material: foodgrade FKM
- Coil power: AC 18v_A (holding)
AC 36v_A (inrush)
DC 14w

OPTIONS

- EPDM** seal, temperature max. 120°C (e.g. code RD201DEG)

VALVE	nominal Ø	flow rate Kvs	OPD		
			min.	max. AC	max. DC
code	[mm]	[l/min]	[barg]	[barg]	[barg]
RD201DRC	1.5	1.3	0	55	55
RD201DRE	2.0	2.2	0	25	25
RD201DRH	3.0	4.5	0	10	10

COILS class 'H' only	
code	[Volts/Hz]
7251	24v DC
7201	24v 50/60Hz
7401	110v 50Hz - 120v 60Hz
7601	200v 50Hz - 220v 60Hz
7701	230v 50Hz - 240v 60Hz

RD201 - RUBY seal, NO -

- Media[Ⓢ]: water, oil, liquids
- Media temperature: -10°C ÷ +130°C
- Ambient temperature: -10°C ÷ +50°C
- Seal material: Ruby
- Coil power: AC 18v_A (holding)
AC 36v_A (inrush)
DC 14w

NOTES

- [Ⓢ] Not 100% leak-proof when used with air/gases. Approximate leak rate is 1,5 ml/min at max. OPD