

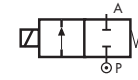
COMMON FEATURES

Body material: brass (CW617N EN 12165)
 Orifice material: stainless steel (1.4305 EN 10088/AISI 303)
 Operator material: stainless steel
 Protection class: IP 65 (with connector and gasket)

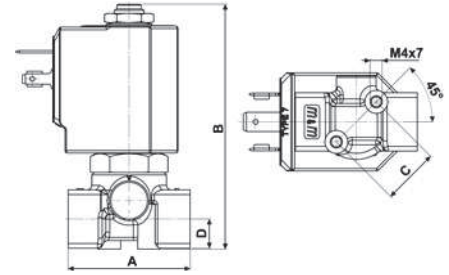
OPTIONS

Available with body thread connection 1/8" (e.g. code D262DVH), performance ratings remain the same as D263DVH.
M Manual override (e.g. code D262DVCM).

TYPE: D262/263



Normally Closed



Flow direction overseat 1 → 2

DIMENSIONS & WEIGHTS		D262	D263
G connection	[ISO 228]	1/8"	1/4"
A	[mm]	40	40
B	[mm]	77.5	77.5
C	[mm]	18.5	18.5
D	[mm]	9.5	9.5
weight	[kg]	0.26	0.26

VALVE	nominal Ø	flow rate Kvs	OPD		
			min.	max. AC	max. DC
code	[mm]	[l/min]	[barg]	[barg]	[barg]
D263DVA	1.0	0.5	0	30	30
D263DVC	1.5	1.3	0	24	24
D263DVG	2.5	3.4	0	18	16
D263DVH	3.0	4.5	0	15	10
D263DVL [Ⓛ]	4.0	6.0	0	10	5
D263DVN [Ⓛ]	5.0	7.5	0	5	2,5
D263DVP [Ⓛ]	6.0	8.0	0	3	1

[Ⓛ] Manual override not available for orifice > Ø 3 mm

COILS	
code	[Volts/Hz]
7250	24v DC
7200	24v 50/60Hz
7400	110v 50Hz - 120v 60Hz
7600	200v 50Hz - 220v 60Hz
7700	230v 50Hz - 240v 60Hz

D262/263 - FKM seal, NC -

Media: water, oil, air
Media temperature: -10°C ÷ +130°C
Ambient temperature: -10°C ÷ +50°C
Seal material: foodgrade FKM
Coil power: AC 18vA (holding)
 AC 36vA (inrush)
 DC 14w

OPTIONS

EPDM seal, temperature max. 120°C (e.g. code D262DEH)
 For vacuum see TIS *55 01*
 ATEX version see TIS *11 12*

VALVE	nominal Ø	flow rate Kvs	OPD		
			min.	max. AC	max. DC
code	[mm]	[l/min]	[barg]	[barg]	[barg]
D263DLA	1.0	0.5	0	9	9
D263DLC	1.5	1.3	0	9	9
D263DLG	2.5	3.4	0	9	8
D263DLH	3.0	4.5	0	9	5

COILS class 'H' only	
code	[Volts/Hz]
7251	24v DC
7201	24v 50/60Hz
7401	110v 50Hz - 120v 60Hz
7601	200v 50Hz - 220v 60Hz
7701	230v 50Hz - 240v 60Hz

D262/263 - FILLED PTFE seal, NC -

Media: steam
Media temperature: -10°C ÷ +180°C
Ambient temperature: -10°C ÷ +70°C
Seal material: Sigodur (filled PTFE)
Coil power: AC 18vA (holding)
 AC 36vA (inrush)
 DC 14w

NOTES

Seamless tube as standard

VALVE	nominal Ø	flow rate Kvs	OPD		
			min.	max. AC	max. DC
code	[mm]	[l/min]	[barg]	[barg]	[barg]
D263DRB1	1.2	0.7	0	200	60
D263DRC1	1.5	1.3	0	200	35
D263DRE1	2.0	2.2	0	120	25
D263DRH1	3.0	4.5	0	50	11

COILS high power - class 'H' only	
code	[Volts/Hz]
72Z1	24v DC
72K1	24v 50/60Hz
74K1	110v 50Hz - 120v 60Hz
77K1	230v 50Hz - 240v 60Hz

D262/263 - RUBY seal, NC -

Media [Ⓢ]: water, oil, liquids
Media temperature: -10°C ÷ +130°C
Ambient temperature: -10°C ÷ +50°C
Seal material: Ruby
Coil power: AC 25vA (holding)
 AC 50vA (inrush)
 DC 22w

NOTES

Seamless tube as standard

[Ⓢ] Not 100% leak-proof when used with air/gases.
 Approximate leak rate is 1,5 ml/min at max. OPD.

ATTENTION: When high pressure valves are supplied without a coil, their nameplates display the max. OPD of the valve when equipped with an AC (25vA) and DC (22w) coil (as shown in the table above).

When using alternative coil power ratings please ensure to request separately the appropriate nameplate at time of order.