

COMMON FEATURES

Body material: stainless steel (1.4305 EN 10088/AISI 303)
 Orifice material: stainless steel (1.4305 EN 10088/AISI 303)
 Operator material: stainless steel
 Protection class: IP 65 (with connector and gasket)

OPTIONS

Available with body thread connection 1/8" (e.g. code D298DVC), performance ratings remain the same as D299DVC.
 Silver shading ring (e.g. code D299DVCA)
NPT connection on request, minimum batch may be required (e.g. code D299DVCN)

DIMENSIONS & WEIGHTS		D298	D299
G connection	[ISO 228]	1/8"	1/4"
A	[mm]	45	45
B	[mm]	80	80
C	[mm]	12.5	12.5
D	[mm]	15.4	15.4
weight	[kg]	0.36	0.36

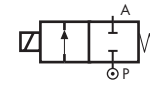
VALVE	nominal Ø	flow rate Kvs	OPD			COILS	
			min.	max. AC	max. DC	code	[Volts/Hz]
code	[mm]	[l/min]	[barg]	[barg]	[barg]	code	[Volts/Hz]
D299DVC	1.5	1.2	0	24	24	7250	24v DC
D299DVG	2.5	3.3	0	18	18	7200	24v 50/60Hz
D299DVH	3.0	4.5	0	15	10	7400	110v 50Hz - 120v 60Hz
D299DVL	4.0	6.0	0	10	5.5	7600	200v 50Hz - 220v 60Hz
D299DVN	5.0	7.5	0	5	2.5	7700	230v 50Hz - 240v 60Hz

VALVE	nominal Ø	flow rate Kvs	OPD			COILS	
			min.	max. AC	max. DC	code	[Volts/Hz]
code	[mm]	[l/min]	[barg]	[barg]	[barg]	code	[Volts/Hz]
D299DKE	2.0	2.3	0	20	20	7250	24v DC
D299DKG	2.5	3.3	0	18	16	7200	24v 50/60Hz
D299DKH	3.0	4.5	0	15	8	7400	110v 50Hz - 120v 60Hz
						7600	200v 50Hz - 220v 60Hz
						7700	230v 50Hz - 240v 60Hz

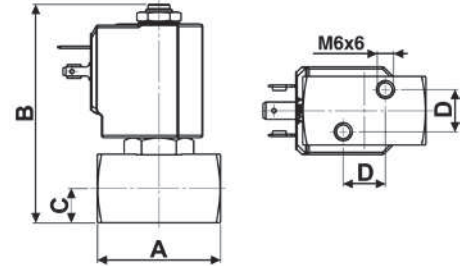
VALVE	nominal Ø	flow rate Kvs	OPD			COILS	
			min.	max. AC	max. DC	code	[Volts/Hz]
code	[mm]	[l/min]	[barg]	[barg]	[barg]	code	[Volts/Hz]
D299DRB1	1.2	0.7	0	200	110	72Z1	24v DC
D299DRC1	1.5	1.2	0	200	80	72K1	24v 50/60Hz
D299DRE1	2.0	2.3	0	140	30	74K1	110v 50Hz - 120v 60Hz
D299DRG1	2.5	3.3	0	90	23	77K1	230v 50Hz - 240v 60Hz
D299DRH1	3.0	4.5	0	50	14		

ATTENTION: When high pressure valves are supplied without a coil, their nameplates display the max. OPD of the valve when equipped with an AC (25vA) and DC (22w) coil (as shown in the table above). **When using alternative coil power ratings please ensure to request separately the appropriate nameplate at time of order.**

TYPE: D298/299



Normally Closed



Flow direction overseat 1 → 2

D298/299 - FKM seal, NC -

Media: water, oil, air and aggressive fluids
Media temperature: -10°C ÷ +130°C
Ambient temperature: -10°C ÷ +50°C
Seal material: foodgrade FKM
Coil power: AC 18vA (holding)
 AC 36vA (inrush)
 DC 14w

OPTIONS

EPDM seal, temperature max. 120°C (e.g. code D298DEH)
ATEX version see page TIS *11 12*

D298/299 - KALREZ® seal, NC -

Media: chemicals
Media temperature: -10°C ÷ +130°C
Ambient temperature: -10°C ÷ +50°C
Seal material: Kalrez® Spectrum™ 6375
Coil power: AC 18vA (holding)
 AC 36vA (inrush)
 DC 14w

OPTIONS

Protective treatment (e.g. code D299DKEE)

D298/299 - RUBY seal, NC -

Media: water, oil, air and aggressive fluids
Media temperature: -10°C ÷ +130°C
Ambient temperature: -10°C ÷ +50°C
Seal material: Ruby
Coil power: AC 25vA (holding)
 AC 50vA (inrush)
 DC 22w

NOTES

Seamless tube as standard

⊕ Not 100% leak-proof when used with air/gases.
 Approximate leak rate is 1,5 ml/min at max. OPD.