



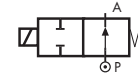
2/2 WAY DIRECT ACTING SOLENOID VALVE, G 1/8"

06 01

COMMON FEATURES

- Media: water, oil, air
- Media temperature: $-10^{\circ}\text{C} \div +130^{\circ}\text{C}$
- Ambient temperature: $-10^{\circ}\text{C} \div +50^{\circ}\text{C}$
- Body material: brass (CW617N EN 12165)
- Operator material: stainless steel
- Protection class: IP 65 (with connector and gasket)

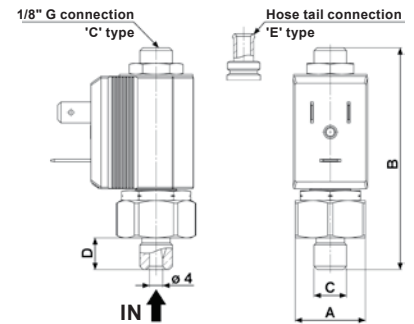
TYPE: RB214



Normally Open



DIMENSIONS & WEIGHTS		RB214
G connection	[ISO 228]	1/8"
A	[mm]	21
B	[mm]	66.5
C	[mm]	1/8"
D	[mm]	9.5
weight	[kg]	0.06



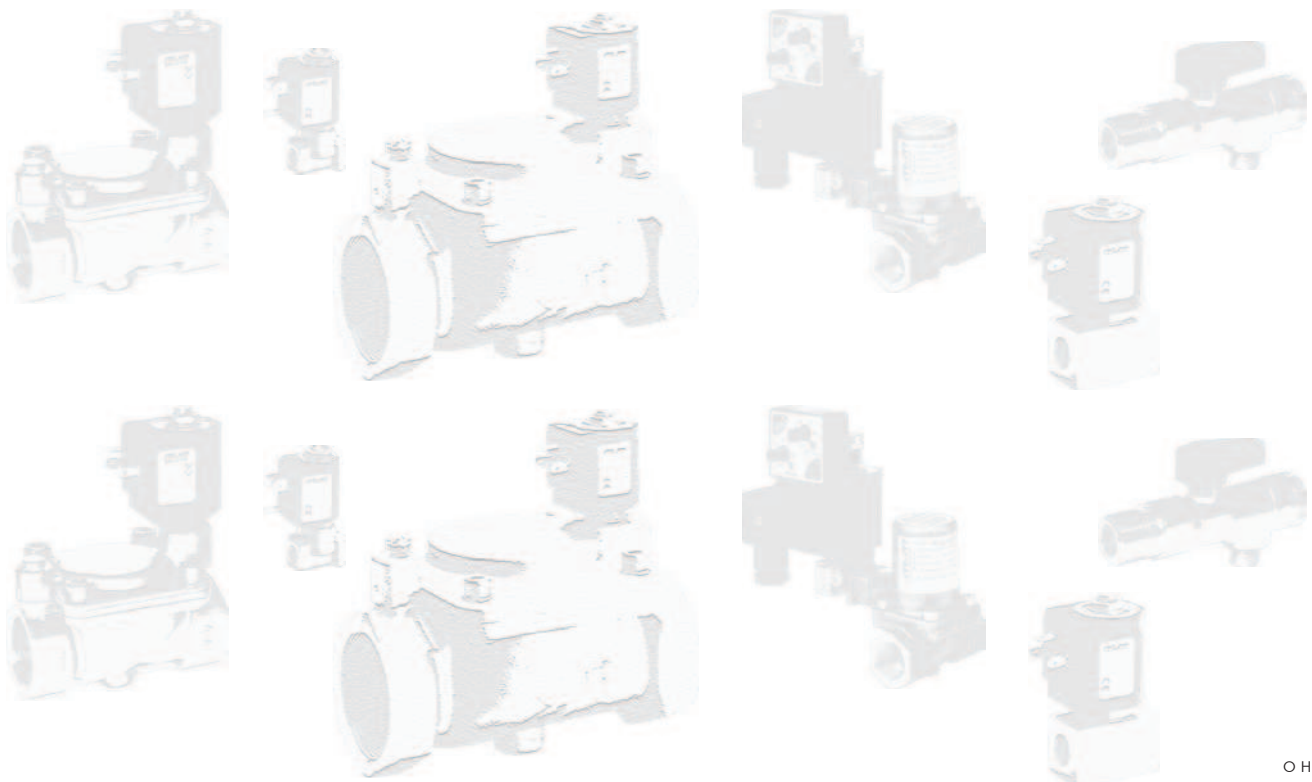
VALVE	nominal \varnothing	flow rate Kvs	OPD			COILS	
			min.	max. AC	max. DC	code	[Volts/Hz]
code	[mm]	[l/min]	[barg]	[barg]	[barg]	code	[Volts/Hz]
RB214CVD	1.7	1.2	0	14	14	2250	24v DC
						2200	24v 50/60Hz
						2400	110v 50Hz - 120v 60Hz
						2600	200v 50Hz - 220v 60Hz
						2700	230v 50Hz - 240v 60Hz

RB214 - FKM seal, NO -

- Seal material: foodgrade FKM
- Coil power: AC 10v_A (holding)
AC 16v_A (inrush)
DC 7w

OPTIONS

- Armature tube with hose tail \varnothing 6 mm (e.g. code RB214EVD)
- EPDM seal, temperature max. 120°C (e.g. code RB214CED)



We reserve the right to make changes without notice

O H14 0601 U