



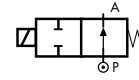
# 2/2 WAY DIRECT ACTING SOLENOID VALVE, G 1/4"

50 08

## COMMON FEATURES

- Body material: brass (CW617N EN 12165)
- Orifice material: stainless steel (1.4305 EN 10088/AISI 303)
- Operator material: stainless steel
- Protection class: IP 65 (with connector and gasket)

## TYPE: RD236

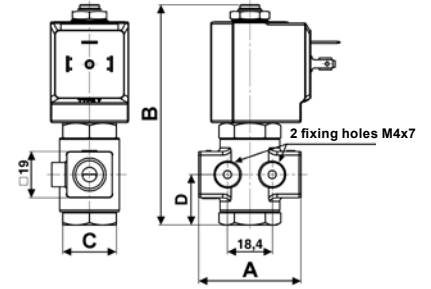


Normally Open



| DIMENSIONS & WEIGHTS |           | RD236  |
|----------------------|-----------|--------|
| G connection         | [ISO 228] | 1/4"   |
| A                    | [mm]      | 47 *   |
| B                    | [mm]      | 91     |
| C                    | [mm]      | Hex 22 |
| D                    | [mm]      | 20.75  |
| weight               | [kg]      | 0.25   |

\* Since July 2014



Flow direction overseat 1 → 2

| VALVE    | nominal Ø | flow rate Kvs | OPD    |         |         | COILS |                       |
|----------|-----------|---------------|--------|---------|---------|-------|-----------------------|
|          |           |               | min.   | max. AC | max. DC | code  | [Volts/Hz]            |
| code     | [mm]      | [l/min]       | [barg] | [barg]  | [barg]  | code  | [Volts/Hz]            |
| RD236DVA | 1.0       | 0.5           | 0      | 25      | 25      | 7250  | 24v DC                |
| RD236DVC | 1.5       | 1.3           | 0      | 20      | 20      | 7200  | 24v 50/60Hz           |
| RD236DVE | 2.0       | 2.0           | 0      | 18      | 18      | 7400  | 110v 50Hz - 120v 60Hz |
| RD236DVG | 2.5       | 2.8           | 0      | 15      | 15      | 7600  | 200v 50Hz - 220v 60Hz |
| RD236DVH | 3.0       | 3.5           | 0      | 12      | 12      | 7700  | 230v 50Hz - 240v 60Hz |
| RD236DVM | 4.5       | 5.5           | 0      | 5       | 5       |       |                       |
| RD236DVP | 6.0       | 8.5           | 0      | 2       | 2       |       |                       |

### RD236 - FKM seal, NO -

- Media: water, oil, air
- Media temperature: -10°C ÷ +130°C
- Ambient temperature: -10°C ÷ +50°C
- Seal material: foodgrade FKM
- Coil power: AC 18v<sub>A</sub> (holding)  
AC 36v<sub>A</sub> (inrush)  
DC 14w

| VALVE    | nominal Ø | flow rate Kvs | OPD    |         |         | COILS |                       |
|----------|-----------|---------------|--------|---------|---------|-------|-----------------------|
|          |           |               | min.   | max. AC | max. DC | code  | [Volts/Hz]            |
| code     | [mm]      | [l/min]       | [barg] | [barg]  | [barg]  | code  | [Volts/Hz]            |
| RD236DLA | 1.0       | 0.5           | 0      | 9       | 9       | 7251  | 24v DC                |
| RD236DLC | 1.5       | 1.3           | 0      | 9       | 9       | 7201  | 24v 50/60Hz           |
| RD236DLE | 2.0       | 2.0           | 0      | 9       | 9       | 7401  | 110v 50Hz - 120v 60Hz |
| RD236DLH | 3.0       | 3.5           | 0      | 9       | 9       | 7601  | 200v 50Hz - 220v 60Hz |
|          |           |               |        |         |         | 7701  | 230v 50Hz - 240v 60Hz |

### RD236 - FILLED PTFE seal, NO -

- Media: steam
- Media temperature: -10°C ÷ +180°C
- Ambient temperature: -10°C ÷ +70°C
- Seal material: Sigodur (filled PTFE)
- Coil power: AC 18v<sub>A</sub> (holding)  
AC 36v<sub>A</sub> (inrush)  
DC 14w

### NOTES

Seamless tube as standard

| VALVE     | nominal Ø | flow rate Kvs | OPD    |         |         | COILS |                       |
|-----------|-----------|---------------|--------|---------|---------|-------|-----------------------|
|           |           |               | min.   | max. AC | max. DC | code  | [Volts/Hz]            |
| code      | [mm]      | [l/min]       | [barg] | [barg]  | [barg]  | code  | [Volts/Hz]            |
| RD236DRA1 | 1.0       | 0.5           | 0      | 180     | 180     | 72Z1  | 24v DC                |
| RD236DRC1 | 1.5       | 1.3           | 0      | 150     | 150     | 72K1  | 24v 50/60Hz           |
| RD236DRE1 | 2.0       | 2.0           | 0      | 60      | 60      | 74K1  | 110v 50Hz - 120v 60Hz |
| RD236DRG1 | 2.5       | 2.8           | 0      | 37      | 37      | 77K1  | 230v 50Hz - 240v 60Hz |
| RD236DRH1 | 3.0       | 3.5           | 0      | 28      | 28      |       |                       |

### RD236 - RUBY seal, NO -

- Media<sup>Ⓢ</sup>: water, oil, liquids
- Media temperature: -10°C ÷ +130°C
- Ambient temperature: -10°C ÷ +50°C
- Seal material: Ruby
- Coil power: AC 25v<sub>A</sub> (holding)  
AC 50v<sub>A</sub> (inrush)  
DC 22w

### NOTES

Seamless tube as standard

<sup>Ⓢ</sup> Not 100% leak-proof when used with air/gases. Approximate leak rate is 1,5 ml/min at max. OPD.

We reserve the right to make changes without notice

© F15 5008 U